

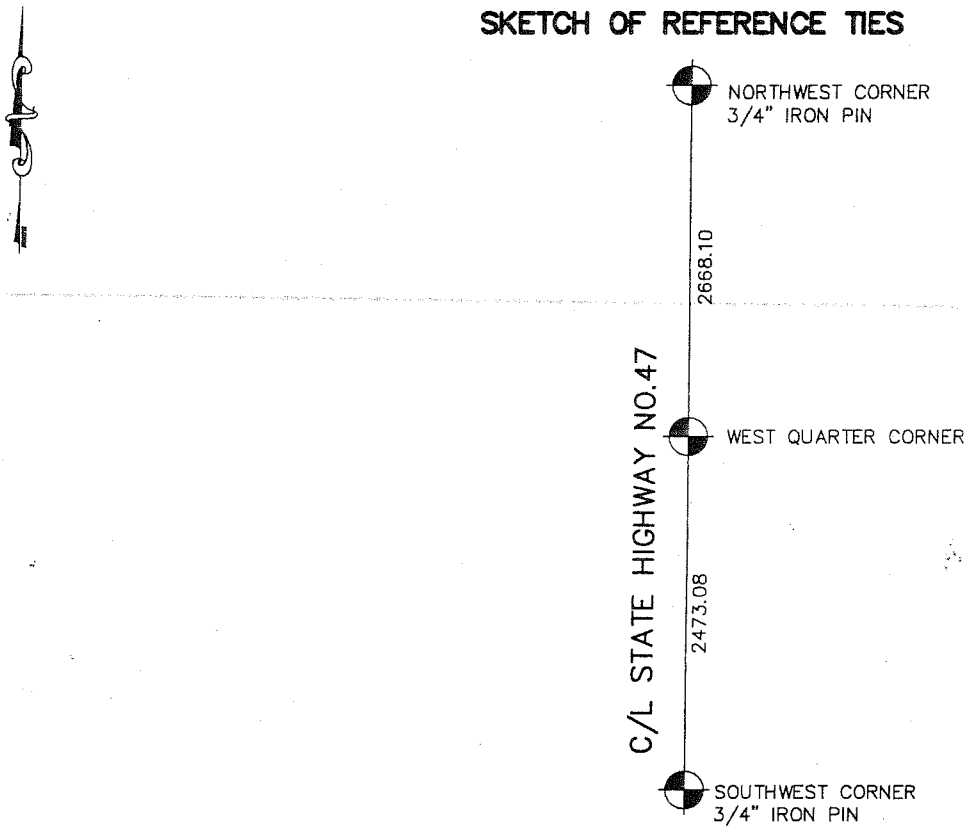
CERTIFICATE OF LOCATION OF GOVERNMENT CORNER

WEST QUARTER Corner of Section 30, Township 42, Range 24, 4TH P.M.
 STATE OF MINNESOTA, County of KANABEC

At the corner location shown on the sketch:
 SET A KANABEC COUNTY MONUMENT
 AND ESTABLISHED G.P.S. COORDINATES ON ITS LOCATION.

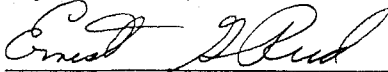
Kanabec County U.S. Survey Feet Coordinates
 NAD 1983, HARN 1996 Adjustment
 Obtained by RTK GPS Observation
 Northing= 231524.08
 Easting= 364876.21
 Note: NAD 1983, HARN 1996 Adjustment
 coordinates are NOT compatible with
 NAD 1983 coordinates
 Note: 1 Meter=3937/1200 U.S. Survey Feet

SKETCH OF REFERENCE TIES



Statement of evidence relative to this corner location is on back of page.

I hereby certify that this document and the data contained herein was prepared by me or under my direct supervision.


Ernest D. Reed 2-22-2007
 Signature Date

Registration No. Minn No 9808

Land Surveyor, [] Professional Engineer
 [] County Surveyor, [] County Engineer

OFFICE OF THE COUNTY RECORDER

County of _____

I hereby certify that this document was filed in the County Recorder's office at _____ M. on the _____ day of _____ A.D., 20____

County Recorder _____

BY _____ Deputy

DOCUMENT NO. _____

WEST QUARTER CORNER SECTION 30, T42, R24

STATEMENT OF EVIDENCE

THIS CORNER FALLS IN THE CENTERLINE OF STATE HIGHWAY NO. 47 AND ALL OF THE ORIGINAL BEARING TREES ARE NOW GONE.

THE DEPARTMENT OF TRANSPORTATION'S RIGHT OF WAY MAP FOR HIGHWAY NO. 47 SHOWS THAT A 5" CONCRETE POST WAS IN PLACE AT THIS CORNER AT P.O.T 1358+26 BEFORE THE HIGHWAY WAS CONSTRUCTED.

ON MARCH 17, 1981, M.B. RUDE SET A 1/2" IRON PIPE AT HIGHWAY P.O.T. 1358+26 BETWEEN THE NORTHWEST AND SOUTHWEST CORNERS OF SECTION 30, USING THE HIGHWAY STATIONING.

M.B. RUDE CHECKED THE RECORDS AT MILLE LACS AND KANABEC COUNTIES, BUT COULD NOT FIND A RECORDS OF WHO SET THE 5" BY 5" CONCRETE POST FOUND BY THE HIGHWAY DEPARTMENT.

IN APRIL 2003 E.G. RUD FOUND THIS PIPE AND ESTABLISHED KANABEC COUNTY COORDINATES ON THIS POSITION.

IN THE SUMMER OF 2006 MINNESOTA HIGHWAY DEPARTMENT PUT AN OVERLAY LIFT ON T.H. #47. PRIOR TO THE OVERLAY MINNESOTA HIGHWAY DEPARTMENT SURVEY CREWS LOCATED THIS CORNER AND ALSO ESTABLISHED KANABEC COUNTY COORDINATES ON THIS LOCATION. MINNESOTA HIGHWAY DEPARTMENT SURVEY POSITION WAS WITHIN 0.02 HUNDREDTHS OF A FOOT FROM E.G. RUDS POSITION.

IN DECEMBER 2006 E.G. RUD RESET A P.K. AT THIS LOCATION WITH A MONUMENT TO BE SET IN THE SPRING OF 2007.