

CERTIFICATE OF LOCATION OF GOVERNMENT CORNER

NORTHWEST Corner of Section 30, Township 42, Range 24, 4TH P.M.

STATE OF MINNESOTA, County of KANABEC

At the corner location shown on the sketch:

SET A P.K.
AND ESTABLISHED G.P.S. COORDINATES ON ITS LOCATION.

Kanabec County U.S. Survey Feet Coordinates
NAD 1983, HARN 1996 Adjustment
Obtained by RTK GPS Observation

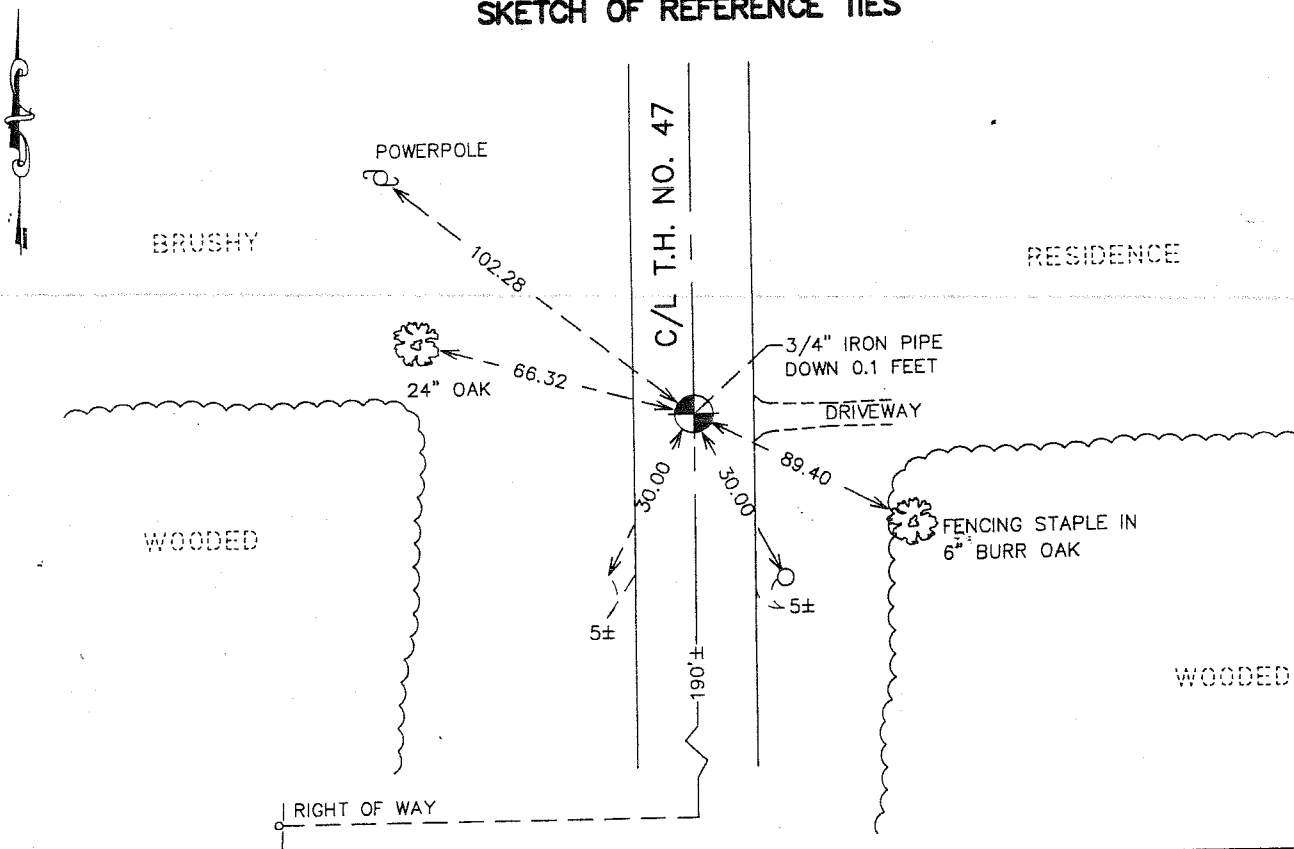
Northing= 234192.03

Easting= 364905.02

Note: NAD 1983, HARN 1996 Adjustment
coordinates are NOT compatible with
NAD 1983 coordinates

Note: 1 Meter=3937/1200 U.S. Survey Feet

SKETCH OF REFERENCE TIES



Statement of evidence relative to this corner location is on back of page.

I hereby certify that this document and the data contained herein was prepared by me or under my direct supervision.

Ernst Reed
Signature

2-22-2007
Date

Registration No. Minn No 9808

Land Surveyor, Professional Engineer

County Surveyor, County Engineer

OFFICE OF THE COUNTY RECORDER

County of _____

I hereby certify that this document was filed in the County Recorder's office at _____ M. on the

_____ day of _____ A.D., 20 _____

County Recorder _____

BY _____ Deputy

DOCUMENT NO. _____

NORTHWEST CORNER SECTION 30, T42, R24

STATEMENT OF EVIDENCE

THIS CORNER FALLS IN THE CENTERLINE OF STATE HIGHWAY NO. 47 AND ALL OF THE ORIGINAL BEARING TREES ARE NOW GONE.

THE DEPARTMENT OF TRANSPORTATION'S RIGHT OF WAY MAP FOR HIGHWAY NO. 47 SHOWS A 5" BY 5" CONCRETE POST WAS IN PLACE AT THIS CORNER, P.I. STATION 1384 PLUS 95.2, BEFORE HIGHWAY NO. 47 WAS CONSTRUCTED.

ON MARCH 17, 1981, M.B. RUDE FOUND A 3/4" IRON PIN AT P.I. STATION 1384 PLUS 95.2 AND ACCEPTED THIS LOCATION AS THE BEST AVAILABLE EVIDENCE OF THE ORIGINAL CORNER LOCATION.

THERE WEREN'T ANY RECORDS AT MILLE LACS AND KANABEC COUNTIES WHICH INDICATED WHO SET THE 5" BY 5" CONCRETE POST FOUND BY THE HIGHWAY DEPARTMENT.

IN JANUARY 1982 JOHN OLIVER FILED A CERTIFICATE OF LOCATION IN MILLE LACS COUNTY. SUBSEQUENT SURVEYS WERE MADE OFF OF THIS CORNER.

IN THE SUMMER OF 2006 TRUNK HIGHWAY NO. 47 WAS OVERLAID WITH A NEW BITUMINOUS WEARING COURSE. PRIOR TO THE OVERLAY MINNESOTA D.O.T. HAD LOCATED THIS PIPE AND ESTABLISHED KANABEC COUNTY COORDINATES ON THIS POSITION. THIS POSITION WAS WITHIN 0.02 HUNDREDTHS OF A FOOT FROM THE POSITION E.G. RUD AND SONS HAD ESTABLISHED IN 2003.

IN DECEMBER 2006 E.G. RUD AND SONS RESET A PK AT THIS LOCATION WITH AN IRON PIPE TO BE SET IN THE SPRING OF 2007.