

CERTIFICATE OF LOCATION OF GOVERNMENT CORNER

NORTHWEST Corner of Section 19, Township 42, Range 24, 4TH P.M.
 STATE OF MINNESOTA, County of KANABEC

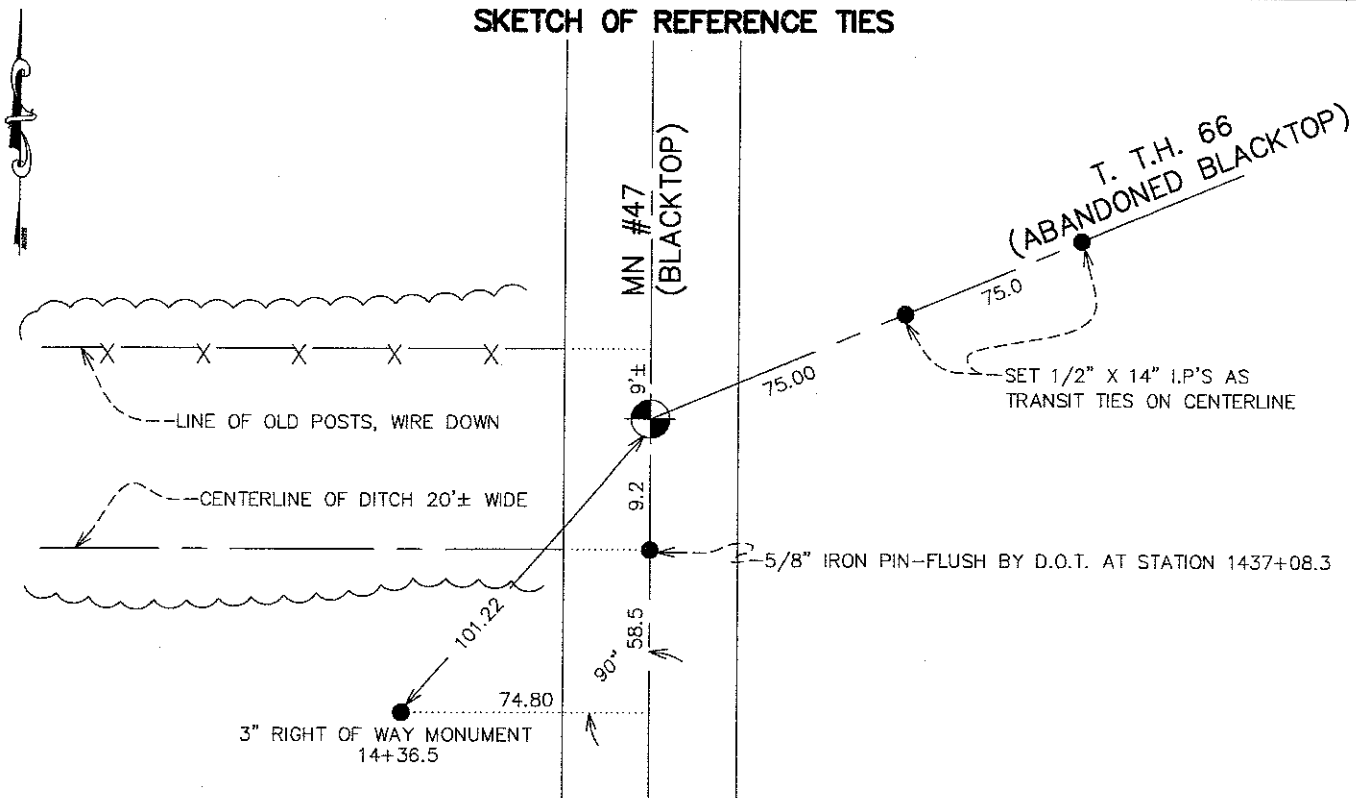
At the corner location shown on the sketch:
 ESTABLISHED KANABEC COUNTY COORDINATES ON THIS POSITION

Kanabec County U.S. Survey Feet Coordinates
 NAD 1983, HARN 1996 Adjustment
 Obtained by RTK GPS Observation

Northing= 239403.21
 Easting= 364979.14

Note: NAD 1983, HARN 1996 Adjustment
 coordinates are NOT compatible with
 NAD 1983 coordinates
 Note: 1 Meter=3937/1200 U.S. Survey Feet

SKETCH OF REFERENCE TIES



Statement of evidence relative to this corner location is on back of page.

I hereby certify that this document and the data contained herein was prepared by me or under my direct supervision.

 Signature Date

Registration No. _____

- Land Surveyor, Professional Engineer
 County Surveyor, County Engineer

OFFICE OF THE COUNTY RECORDER

County of _____

I hereby certify that this document was filed in the County Recorder's office at _____ M. on the _____ day of _____ A.D., 20____

County Recorder _____

BY _____ Deputy

DOCUMENT NO. _____

NORTHWEST CORNER SECTION 19, T42, R24

STATEMENT OF EVIDENCE

THE ORIGINAL CORNER WAS SET BY DEPUTY SURVEYOR ISAAC BANKER ON DECEMBER 15, 1855 AND 4 BEARING TREES ESTABLISHED. NO EVIDENCE TO THE CORNER OR BEARING TREES REMAIN TODAY.

IN 1920 GEORGE JENKS SET A SANDSTONE MONUMENT WITH A CHISELED "X".

IN 1959 T.Y. TROOLIN (MINNESOTA HIGHWAY DEPARTMENT) SET A 2" IRON PIPE TO REPLACE THE STONE MONUMENT.

IN 1980 JOHN OLIVER SET A MILLE LACS COUNTY MONUMENT OVER THE 2 INCH IRON PIPE.

IN 2006 E.G. RUD ESTABLISHED KANABEC COUNTY COORDINATES ON THIS CORNER AS DID THE MINNESOTA HIGHWAY DEPARTMENT BEFORE THE OVERLAY WAS PLACED ON TRUNK HIGHWAY # 47. COORDINATES AGREED WITHIN 0.02 OF A FOOT. A 1/2" IRON PIPE WAS SET ON TOP.