

CERTIFICATE OF LOCATION OF GOVERNMENT CORNER

NORTHWEST Corner of Section 5, Township 42, Range 24, 4TH P.M.

STATE OF MINNESOTA, County of KANABEC

At the corner location shown on the sketch:
On 06/ /2004 Found a Kanabec County Monument.

Kanabec County U.S. Survey Feet Coordinates
NAD 1983, HARN 1996 Adjustment
Obtained by RTK GPS Observation

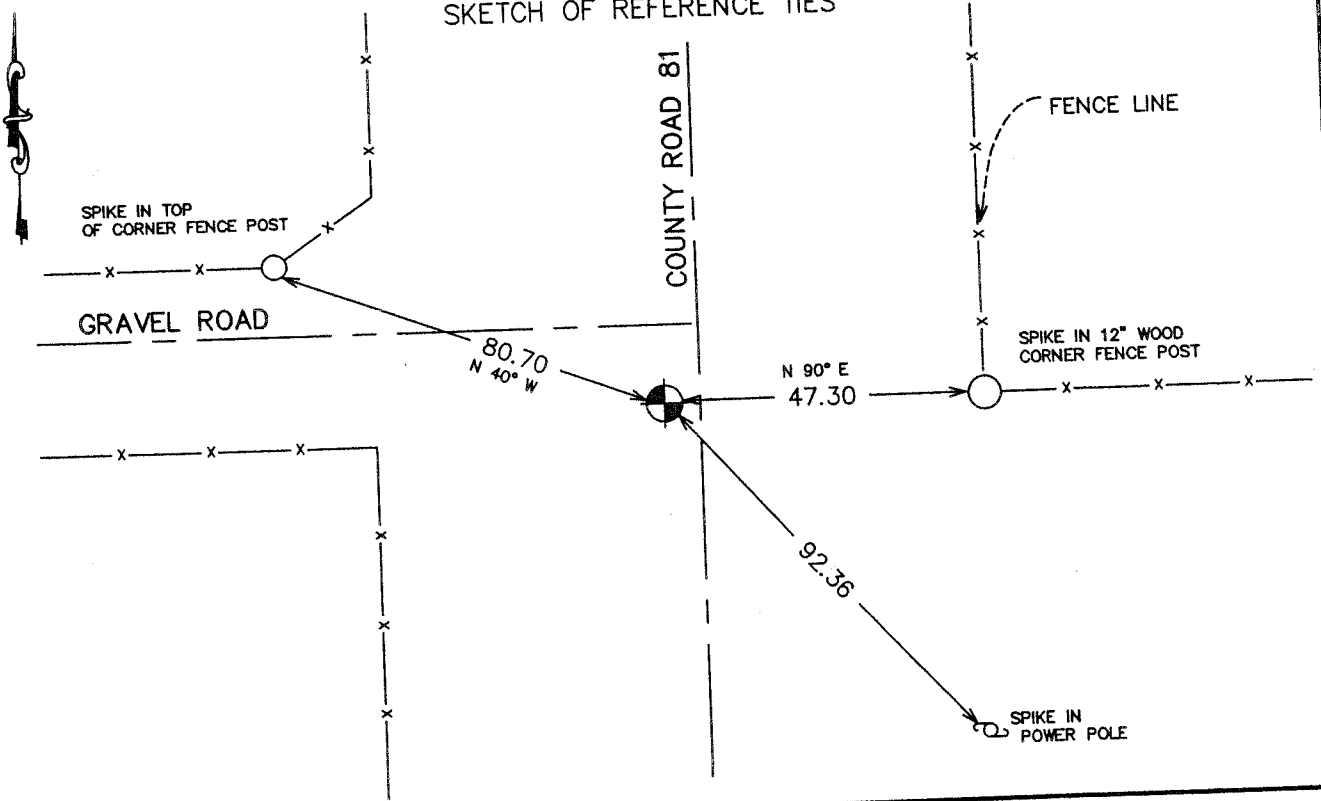
Northing= 255262.80

Easting= 370882.57

Note: NAD 1983, HARN 1996 Adjustment
coordinates are NOT compatible with
NAD 1983 coordinates

Note: 1 Meter=3937/1200 U.S. Survey Feet

SKETCH OF REFERENCE TIES



Statement of evidence relative to this corner location is on back of page.

I hereby certify that this document and the data contained herein was prepared by me or under my direct supervision.

Ernest J. Reed
Signature

6-30-2004
Date

Registration No. 9808

- Land Surveyor, [] Professional Engineer
[] County Surveyor, [] County Engineer

OFFICE OF THE COUNTY RECORDER

County of _____
I hereby certify that this document was filed in the County Recorder's office at _____ M. on the _____ day of _____ A.D., 20____
County Recorder _____
BY _____ Deputy
DOCUMENT NO. _____

STATEMENT OF EVIDENCE
(FROM TIE SHEET 379)

Set monument according to iron pipe that we found which we found out that the brass cap was broken off from the blade hitting it. It also fit occupation lines well, and we found out that the road was not where it was supposed to be.

Handschu found government brass cap monument in September 1933. Clar Wahlberg said the brass cap was knocked off by blade.

(2004)

In June 2004, we did a survey around part of Sections 5 and 6 and found this monument. Most of the ties were gone, but the distance to the southwest corner of Section 5 measured 4889.55, and Handschu measured 4890 in 1933. We accepted this monument as the location for this corner and established Kanabec County Coordinates on this position. We also took additional ties.