

CERTIFICATE OF LOCATION OF GOVERNMENT CORNER

North Quarter Corner of Section 1, Township 42 North, Range 24 West,
4th Principal Meridian, Kanabec County, State of Minnesota

At the corner location shown on the sketch:
On 10/25/2023 found a 1/2" Rebar with plastic cap marked
LS 42630. Left said monument as found.

Kanabec County U.S. Survey Feet Coordinates
NAD 1983, HARN 1996 Adjustment
Obtained by RTK GPS observation
Northing: 256566.4734
Easting: 394755.3885

Note: NAD 1983, HARN 1996 Adjustment
coordinates are NOT compatible with
NAD 1983 coordinates
Note: 1 Meter = 3937/1200 U.S. Survey Feet

SKETCH OF REFERENCE TIES

NOT TO SCALE

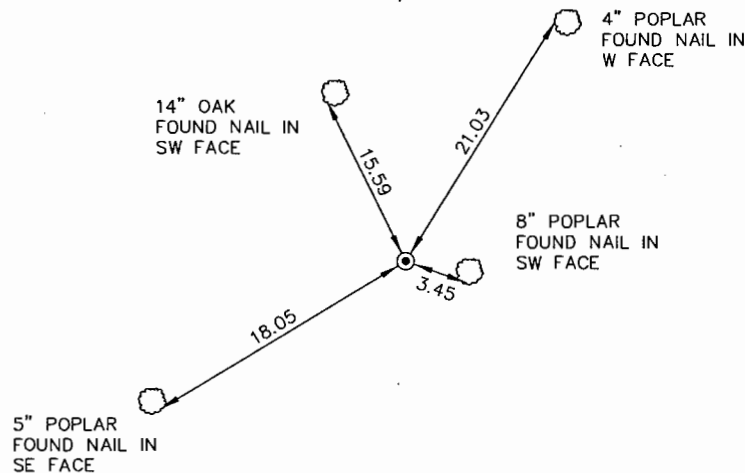
DISTANCE UNITS FOR THIS DRAWING IS
U.S. SURVEY FEET

AITKIN COUNTY

SECTION 36

T.43, R.24

THE BASIS OF BEARINGS FOR THIS
DRAWING IS THE KANABEC COUNTY
COORDINATE SYSTEM BY MNDOT,
NAD 1983, HARN 1996 ADJUSTMENT



SECTION 1

T.42, R.24

KANABEC COUNTY



Kroschel Land Surveyors, Inc.

1639 Main Street North, Suite 6, Pine City, MN 55063
Phone: 320-629-3267 Fax: 320-629-0176

Statement of evidence relative to this corner location is on back of page.

I hereby certify that this report was prepared by me or under my direct supervision, that the United States public land survey monument record is correct and complete to the best of my knowledge and belief, and that I am a duly Licensed Land Surveyor under the laws of the State of Minnesota.

Tyler J. Kroschel, County Surveyor

3/26/2024
Date

License No. 44490

OFFICE OF THE COUNTY RECORDER

County of Kanabec

I hereby certify that this document was filed in the
County Recorder's office at _____ .M. on the
_____ day of _____ A.D., 20____

County Recorder _____, Deputy

DOCUMENT NO. _____

Statement of Evidence:

In November of 1849, Deputy Surveyor James Freeman set a post to mark the North Quarter Corner of Section 1, Township 42 North, Range 24 West, 4th Principal Meridian.

Reference ties were taken to:

- 10 inch Balsam at North 65 degrees West a distance of 23 links
- 14 inch Balsam at South a distance of 16 links

All of the original Government corner evidence was searched for. None was found.

1926—Aitkin County Surveyor H.D. Keath made a survey in Section 36 of T.43, R.24 (Field Book 2, Page 30). He shows a distance of 5280 feet along the south line of Section 36.

2023—Aitkin County Surveyor Randy Quale, LS 42630 made a survey along the south line of T.43, R.23. He set a 1/2" x 24" Rebar with plastic cap at the corner location and filed a corner certificate with the Aitkin County Recorder. He set the corner by single proportion measurement between the Southeast and Southwest corners of Section 36, T.43, R.23.

In October 2023, I made a survey around Section 1, Township 42 North, Range 24 West, 4th Principal Meridian for Stephen Hennen to locate existing monuments.

On 10/25/2023 I made a search with a magnetic locator and found a 1/2" Rebar with plastic cap marked LS 42630. Mr. Quale's section dimensions and reference ties all fit very well. Checked ties and assigned Kanabec County Coordinates.

This location was determined to be the best available evidence of the original corner monument location.