

# CERTIFICATE OF LOCATION OF GOVERNMENT CORNER

Northeast Corner of Section 1, Township 42 North, Range 24 West,  
4th Principal Meridian, Kanabec County, State of Minnesota

At the corner location shown on the sketch:  
On 10/25/2023 found a Cast Aluminum Monument, per  
Certificate on file. Left said monument as found.

Kanabec County U.S. Survey Feet Coordinates  
NAD 1983, HARN 1996 Adjustment  
Obtained by RTK GPS observation  
Northing: 256713.3809  
Easting: 397419.9876

Note: NAD 1983, HARN 1996 Adjustment  
coordinates are NOT compatible with  
NAD 1983 coordinates  
Note: 1 Meter = 3937/1200 U.S. Survey Feet

## SKETCH OF REFERENCE TIES

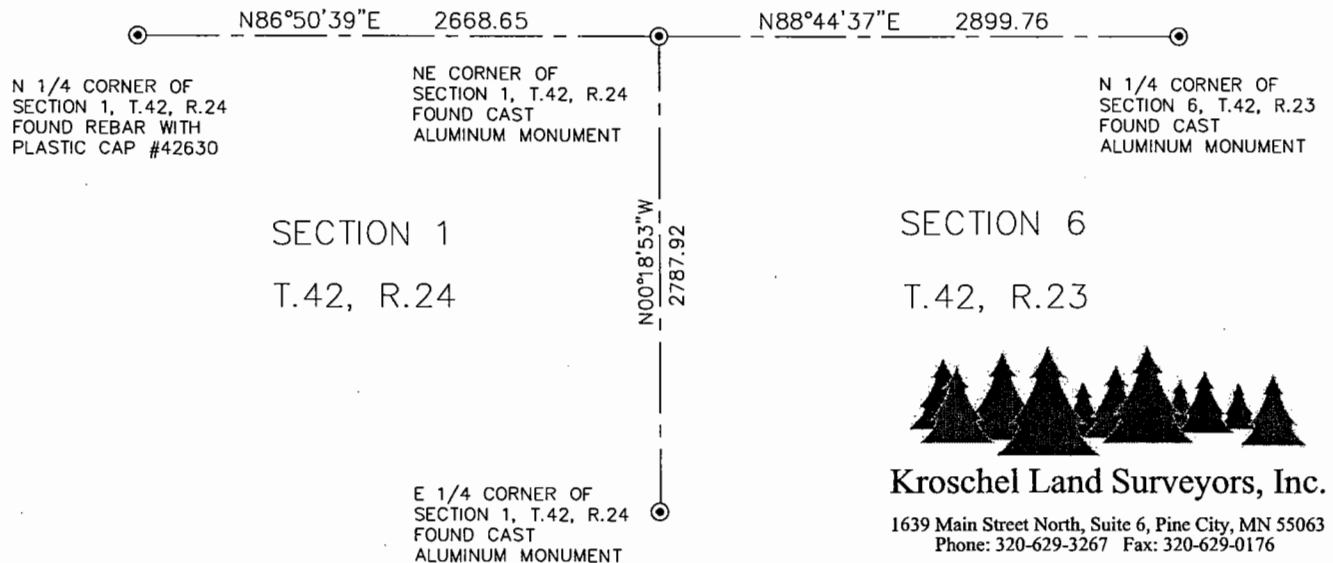
NOT TO SCALE

DISTANCE UNITS FOR THIS DRAWING IS  
U.S. SURVEY FEET

THE BASIS OF BEARINGS FOR THIS  
DRAWING IS THE KANABEC COUNTY  
COORDINATE SYSTEM BY MNDOT,  
NAD 1983, HARN 1996 ADJUSTMENT



AITKIN COUNTY



**Kroschel Land Surveyors, Inc.**

1639 Main Street North, Suite 6, Pine City, MN 55063  
Phone: 320-629-3267 Fax: 320-629-0176

Statement of evidence relative to this corner location is on back of page.

I hereby certify that this report was prepared by me or under my direct supervision, that the United States public land survey monument record is correct and complete to the best of my knowledge and belief, and that I am a duly Licensed Land Surveyor under the laws of the State of Minnesota.

Tyler J. Kroschel, County Surveyor

3/26/2024  
Date

License No. 44490

## OFFICE OF THE COUNTY RECORDER

County of Kanabec

I hereby certify that this document was filed in the County Recorder's office at \_\_\_\_\_ .M. on the \_\_\_\_\_ day of \_\_\_\_\_ A.D., 20\_\_\_\_

County Recorder \_\_\_\_\_, Deputy

DOCUMENT NO. \_\_\_\_\_

Statement of Evidence:

In November of 1849, Deputy Surveyor James Freeman set a post to mark the Northeast Corner of Section 1, Township 42 North, Range 24 West, 4th Principal Meridian.

Reference ties were taken to:

- 12 inch Birch at North 55 degrees East a distance of 47 links
- 12 inch Spruce at North 60 degrees West a distance of 25 links
- 18 inch Aspen at South 70 degrees East a distance of 21 links
- 14 inch Aspen at South 25 degrees West a distance of 16 links

All of the original Government corner evidence was searched for. None was found.

1926—Aitkin County Surveyor H.D. Keath made a survey in Section 36 of T.43, R.24 (Field Book 2, Page 30). He shows a distance of 5280 feet along the south line of Section 36.

1974—Surveyor M.B. Rude, LS 8195 made a survey in Section 6, T.42, R.23 and filed a corner certificate for the Northwest corner of Section 6, T.42, R.23. He set a Cast Aluminum Monument by single proportion measurement between the Southwest corner of Section 7, T.42, R.23 and the Northwest corner of Section 31, T.43, R.23. He states there was no other corner within 4 to 5 miles to the west to proportion to. He states this location fits well with topographic ties from the original Government survey and the USGS Quadrangle sheet.

In October 2023, I made a survey around Section 1, Township 42 North, Range 24 West, 4th Principal Meridian for Stephen Hennen to locate existing monuments.

On 10/25/2023 I made a search with a magnetic locator and found a Cast Aluminum Monument per Certificate on file. All of Rude's ties appear to be gone. The found Cast Aluminum Monument fit Rude's section dimensions very well. Assigned Kanabec County Coordinates.

This location was determined to be the best available evidence of the original corner monument location.