

CERTIFICATE OF LOCATION OF GOVERNMENT CORNER

EAST QUARTER Corner of Section 24 , Township 42 , Range 24 , 4TH P.M.
~~WEST QUARTER~~ Corner of Section ~~24~~ , Township ~~42~~ , Range ~~24~~ , 4TH P.M.

STATE OF MINNESOTA, County of KANABEC

At the corner location shown on the sketch:
 FOUND 4" BY 17" CAST IRON MONUMENT

Kanabec County U.S. Survey Feet Coordinates
 NAD 1983, HARN 1996 Adjustment
 Obtained by RTK GPS Observation

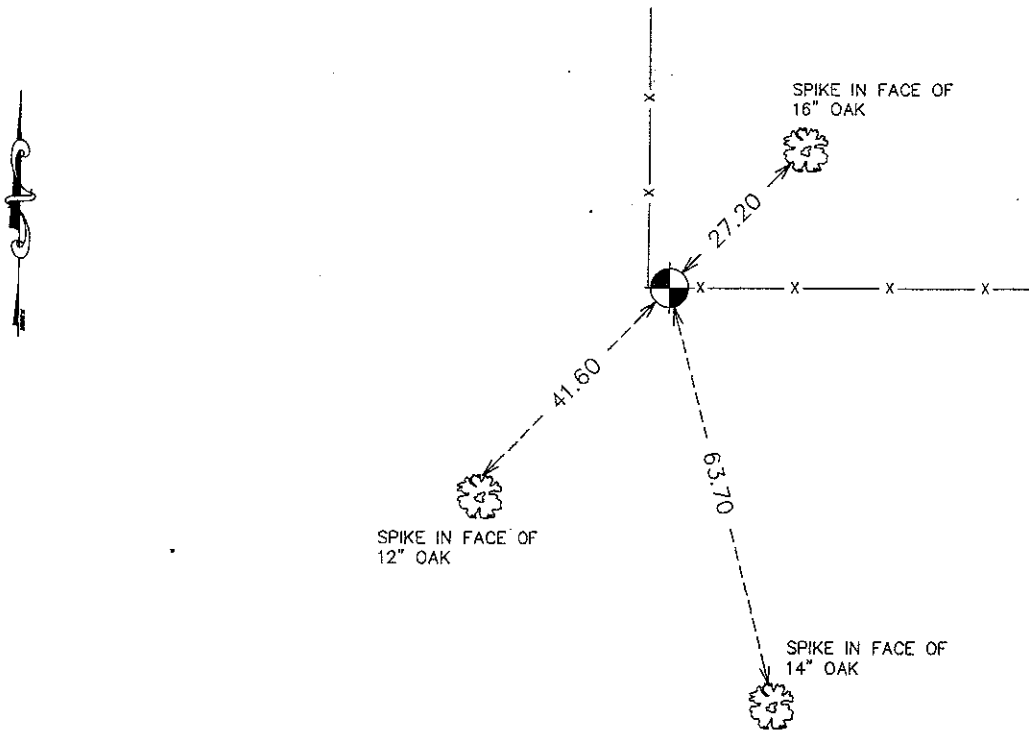
Northing= 238164.07

Easting= 397176.89

Note: NAD 1983, HARN 1996 Adjustment
 coordinates are NOT compatible with
 NAD 1983 coordinates

Note: 1 Meter=3937/1200 U.S. Survey Feet

SKETCH OF REFERENCE TIES



Statement of evidence relative to this corner location is on back of page.

I hereby certify that this document and the data contained herein was prepared by me or under my direct supervision.

Ernest Alred
 Signature

11-27-10
 Date

Registration No. 9808

Land Surveyor, [] Professional Engineer

[] County Surveyor, [] County Engineer

OFFICE OF THE COUNTY RECORDER

County of _____

I hereby certify that this document was filed in the County Recorder's office at _____ M. on the

_____ day of _____ A.D., 20__

County Recorder _____

BY _____ Deputy

DOCUMENT NO. _____

W1/4 CORNER, SEC. 19, T42, R23.
E1/4 CORNER, SEC. 24, T42, R24

STATEMENT OF EVIDENCE

ALL OF THE ORIGINAL BEARING TREES ARE NOW GON.

THERE IS NO SURVEY DATA ON FILE FOR THIS CORNER.

THERE IS AN EXISTING FENCE CORNER AT THE E1/4 CORNER OF SEC. 24. THIS FENCE CORNER HAS BEEN MAINTAINED IN ITS ORIGINAL LOCATION PER MR. JOHN SCOTT, THE LAND OWNER OF THE NE1/4 OF SEC. 24. MR. JOHN SCOTT ALSO TESTIFIED THAT THE PREVIOUS LAND OWNER SAID THE FENCE CORNER WAS PLACED AT THE ORIGINAL QUARTER POST LOCATION.

M.B. RUDE SET THIS CORNER AT THE CORNER FENCE LOCATION PER MR. JOHN SCOTT'S TESTIMONY.

ON MAY 13, 2010, E.G. RUD AND SONS, INC. FOUND THIS CAST IRON MONUMENT AND KANABEC COUNTY COORDINATES WERE ESTABLISHED ON THIS POSITION.