

# CERTIFICATE OF LOCATION OF GOVERNMENT CORNER

~~WEST QUARTER~~ Corner of Section ~~28~~, Township ~~42~~, Range ~~23~~, 4TH P.M.  
EAST QUARTER Corner of Section 25, Township 42, Range 24, 4TH P.M.

STATE OF MINNESOTA, County of KANABEC

At the corner location shown on the sketch:  
SET A #7 REBAR WITH ALUMINUM CAP

Kanabec County U.S. Survey Feet Coordinates  
NAD 1983, HARN 1996 Adjustment  
Obtained by RTK GPS Observation

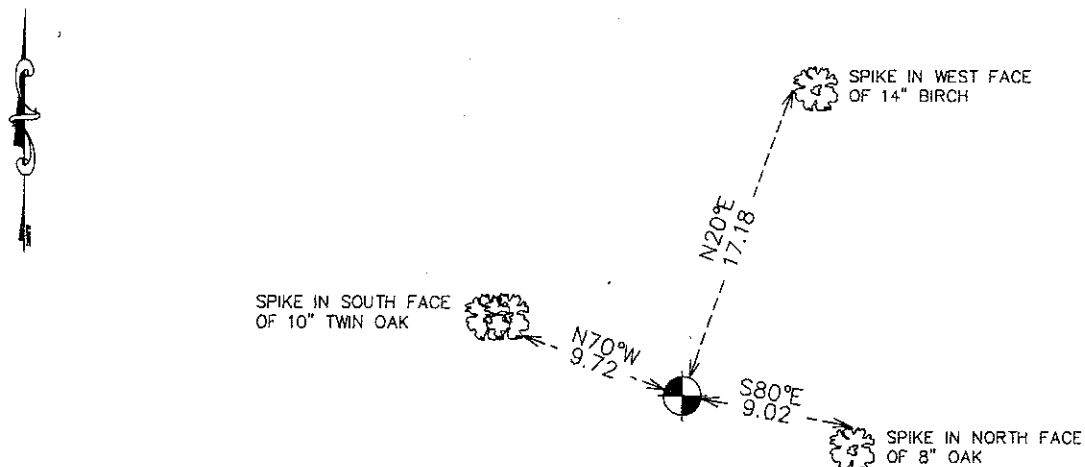
Northing= 232908.07

Easting= 397053.26

Note: NAD 1983, HARN 1996 Adjustment  
coordinates are NOT compatible with  
NAD 1983 coordinates

Note: 1 Meter=3937/1200 U.S. Survey Feet

## SKETCH OF REFERENCE TIES



Statement of evidence relative to this corner location is on back of page.

I hereby certify that this document and the data contained herein was prepared by me or under my direct supervision.

*Ernest J. Rud*  
Signature

12-21-2010  
Date

Registration No. 9808

Land Surveyor,  Professional Engineer

County Surveyor,  County Engineer

## OFFICE OF THE COUNTY RECORDER

County of \_\_\_\_\_

I hereby certify that this document was filed in the County Recorder's office at \_\_\_\_\_ M. on the

\_\_\_\_\_ day of \_\_\_\_\_ A.D., 20\_\_

County Recorder \_\_\_\_\_

BY \_\_\_\_\_ Deputy

DOCUMENT NO. \_\_\_\_\_

E1/4 CORNER, SEC. 25, T42, R24  
W1/4 CORNER, SEC. 30, T42, R23

**STATEMENT OF EVIDENCE**

**THE ORIGINAL CORNER WAS SET ON DEC. 19, 1849 AND 2 BEARING TREES NOTED AS:  
30" DRY PINE @ 60 LINKS BEARING S50°W  
12" DRY PINE @ 11 LINKS BEARING EAST**

**NO VISIBLE EVIDENCE REMAINS TODAY FOR THE CORNER OR THE BEARING TREES.**

**THIS CORNER FALLS IN A TAMARAC SWAMP AS THE ORIGINAL NOTES ALSO STATED.**

**NO RECORDS OF ANY SUBSEQUENT SURVEYS COULD BE FOUND AT THE KANABEC COUNTY SURVEYOR'S OFFICE.**

**THERE ARE NO LINES OF OCCUPATION WITHIN HUNDREDS OF FEET.**

**THIS CORNER WAS TREATED AS LOST AND SET ON LINE AND AT A PROPORTIONATE DISTANCE BETWEEN THE W1/4 CORNER OF SEC 19 AND THE SW CORNER OF SEC. 31. A MONUMENT WAS SET, TIES TAKEN AND KANABEC COUNTY COORDINATES WERE ESTABLISHED ON THIS POSITION.**