

CERTIFICATE OF LOCATION OF GOVERNMENT CORNER

Northeast Corner of Section 36, Township 42 North, Range 24 West,
4th Principal Meridian, Kanabec County, State of Minnesota

At the corner location shown on the sketch:

On 3/22/2013 set a 1/2" x 20" iron pipe monument with Aluminum Cap.

Kanabec County U.S. Survey Feet Coordinates
NAD 1983, HARN 1996 Adjustment
Obtained by RTK GPS observation
Northing: 230280.0750
Easting: 396991.4450

Note: NAD 1983, HARN 1996 Adjustment
coordinates are NOT compatible with
NAD 1983 coordinates
Note: 1 Meter = 3937/1200 U.S. Survey Feet

SKETCH OF REFERENCE TIES

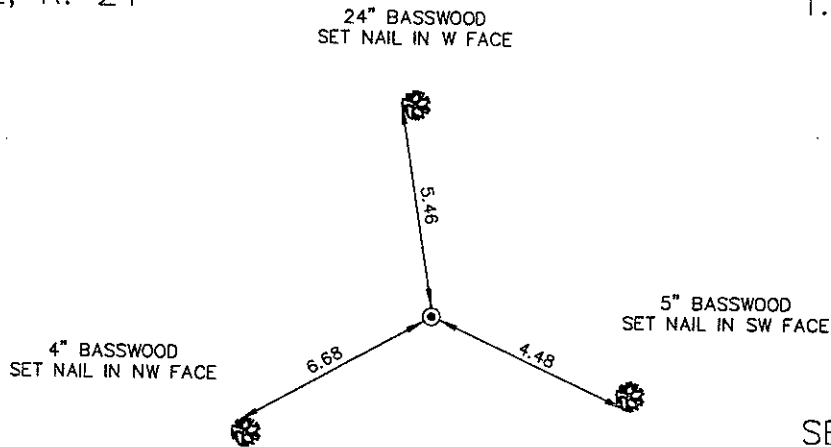
KROSCHEL LAND SURVEYORS, INC.
ASSUMES NO LIABILITY FOR THE ACCURACY
OF THE GPS COORDINATES SHOWN HEREON.
ALL COORDINATES AND DIMENSIONS
SHOULD BE FIELD VERIFIED BY THE USER.

NOT TO SCALE

THE BASIS OF BEARINGS FOR THIS
DRAWING IS THE KANABEC COUNTY
COORDINATE SYSTEM BY MNDOT,
NAD 1983, HARN 1996 ADJUSTMENT

SECTION 25
T. 42, R. 24

SECTION 30
T. 42, R. 23



SECTION 31
T. 42, R. 23

SECTION 36
T. 42, R. 24



Kroschel Land Surveyors, Inc.

1639 Main Street North, Suite 6, Pine City, MN 55063
Phone: 320-629-3267 Fax: 320-629-0176

Statement of evidence relative to this corner location is on back of page.

I hereby certify that this survey, plan, or report was prepared by me or under my direct supervision, that the United States public land survey monument record is correct and complete to the best of my knowledge and belief, and that I am a duly Licensed Land Surveyor under the laws of the State of Minnesota.

Tyler J. Kroschel

4-4-2013
Date

License No. 44490

Land Surveyor County Surveyor

OFFICE OF THE COUNTY RECORDER
County of Kanabec

I hereby certify that this document was filed in the County Recorder's office at _____ .M. on the _____ day of _____ A.D., 20____
County Recorder _____

By _____, Deputy

DOCUMENT NO. _____

120/38

Statement of Evidence:

In November of 1849, Deputy Surveyor set a post to mark the Northeast Corner of Section 36, Township 42 North, Range 24 West, 4th Principal Meridian.

Reference ties were taken to:

30 inch Dry Pine at South 50 degrees West a distance of 60 links
12 inch Dry Pine at East a distance of 62 links

All of the original Government corner evidence was searched for. None was found.

In 2010, Ernie Rud, RLS No.9808, performed a survey along the east lines of Sections 25 and 36. He established all the government corners along Sections 25 and 36, except he did not establish the NE corner of Section 36.

In March 2013, a survey was made around Section 25, Township 42 North, Range 24 West, 4th Principal Meridian for Shawn Caron to locate existing monuments, lines of occupation and establish search areas.

On 3/22/2013 a search was made by probing with machetes and checking with a magnetic locator. No evidence of corner was found.

I established this corner on line and halfway between the East Quarter corner of Section 36 and the East Quarter corner of Section 25.

On 3/22/2013, I set a 1/2" x 20" iron pipe monument with Aluminum Cap, established reference ties and assigned Kanabec County Coordinates. This location was determined to be the best available evidence of the original government corner location.



Kroschel Land Surveyors, Inc.

1639 Main Street North, Suite 6, Pine City, MN 55063
Phone: 320-629-3267 Fax: 320-629-0176