

# CERTIFICATE OF LOCATION OF GOVERNMENT CORNER

WEST QUARTER                      Corner of Section 36,                      Township 42,                      Range 24,                      4TH P.M.  
EAST QUARTER                      Corner of Section 36,                      Township 42,                      Range 24,                      4TH P.M.

STATE OF MINNESOTA, County of                      KANABEC

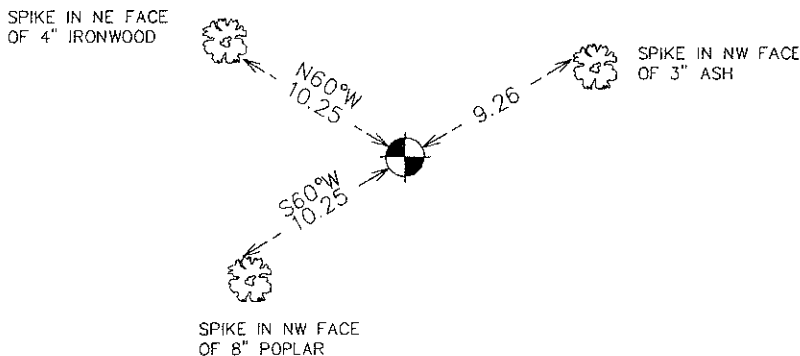
At the corner location shown on the sketch:  
SET A #7 REBAR WITH AN ALUMINUM CAP

Kanabec County U.S. Survey Feet Coordinates  
NAD 1983, HARN 1996 Adjustment  
Obtained by RTK GPS Observation

Northing= 227652.08  
Easting= 396929.63

Note: NAD 1983, HARN 1996 Adjustment  
coordinates are NOT compatible with  
NAD 1983 coordinates  
Note: 1 Meter=3937/1200 U.S. Survey Feet

## SKETCH OF REFERENCE TIES



Statement of evidence relative to this corner location is on back of page.

I hereby certify that this document and the data contained herein was prepared by me or under my direct supervision.

Ernest J. Paul 12-23-10  
Signature Date

Registration No. 9808

Land Surveyor,  Professional Engineer  
 County Surveyor,  County Engineer

## OFFICE OF THE COUNTY RECORDER

County of                     

I hereby certify that this document was filed in the County Recorder's office at                      M. on the

                     day of                      A.D., 20                    

County Recorder                     

BY                      Deputy

DOCUMENT NO.

E1/4 CORNER, SEC. 36, T42, R24  
W1/4 CORNER, SEC. 31, T42, R23

**STATEMENT OF EVIDENCE**

**THE ORIGINAL CORNER WAS SET ON DEC. 18, 1849 AND 2 BEARING TREES NOTED AS:  
12" BIRCH @ 6 LINKS BEARING N48°E  
12" BLACK OAK @ 39 LINKS BEARING S57°W**

**NO VISIBLE EVIDENCE REMAINS TODAY FOR THE CORNER OR THE BEARING TREES.**

**THIS CORNER FALLS 25 CHAINS NORTH OF TAMARAC SWAMP AS THE ORIGINAL NOTES ALSO STATED.**

**NO RECORDS OF ANY SUBSEQUENT SURVEYS COULD BE FOUND AT THE KANABEC COUNTY SURVEYOR'S OFFICE.**

**THERE ARE NO LINES OF OCCUPATION WITHIN HUNDREDS OF FEET.**

**THIS CORNER WAS TREATED AS LOST AND SET ON LINE AND AT A PROPORTIONATE DISTANCE BETWEEN THE W1/4 CORNER OF SEC 19 AND THE SW CORNER OF SEC. 31. A MONUMENT WAS SET AND KANABEC COUNTY COORDINATES WERE ESTABLISHED ON THIS POSITION.**