

4224 001

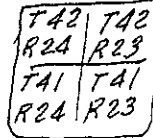
Index No. 4223037

CERTIFICATE OF LOCATION OF GOVERNMENT CORNER

SE
~~SOUTHWEST~~ Corner of Section 36, Township 42, Range 24, 4TH P.M.

STATE OF MINNESOTA, County of KANABEC

At the corner location shown on the sketch:
ON 5/13/2010 FOUND A 2" X 36" CAPPED PIPE WITH
A 6" SQUARE HEAD ATTACHED



Kanabec County U.S. Survey Feet Coordinates
NAD 1983, HARN 1996 Adjustment
Obtained by RTK GPS Observation

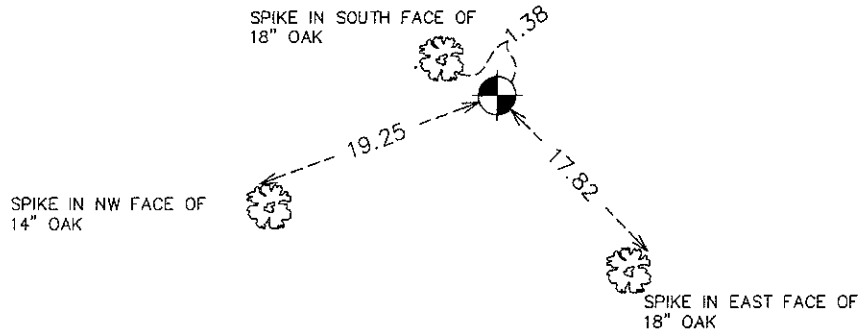
Northing= 225024.09

Easting= 396867.81

Note: NAD 1983, HARN 1996 Adjustment
coordinates are NOT compatible with
NAD 1983 coordinates

Note: 1 Meter=3937/1200 U.S. Survey Feet

SKETCH OF REFERENCE TIES



Statement of evidence relative to this corner location is on back of page.

I hereby certify that this document and the data contained herein was prepared by me or under my direct supervision.

Ernest Rud
Signature

11-27-10
Date

Registration No. 9808

Land Surveyor, Professional Engineer

County Surveyor, County Engineer

OFFICE OF THE COUNTY RECORDER

County of _____

I hereby certify that this document was filed in the County Recorder's office at _____ M. on the

_____ day of _____ A.D., 20____

County Recorder _____

BY _____ Deputy

DOCUMENT NO. _____

SW CORNER, SEC. 31, T42, R23

STATEMENT OF EVIDENCE

ALL OF THE ORIGINAL BEARING TREES ARE NOW GONE.

THERE IS NO RESURVEY DATA ON FILE FOR THIS CORNER.

THERE ARE NO DEFINITE LINES OF OCCUPATION IN THIS AREA.

ON FEB. 2, 1983, M.B. RUDE SET THIS CORNER BY DOUBLE PROPORTIONAL MEASUREMENT BETWEEN THE E1/4 CORNER OF SEC. 12, T41, R24 AND THE E1/4 CORNER OF SEC. 24, T42, R24 AND THE N1/4 CORNER OF SEC. 2, T41, R24 AND THE SE CORNER OF SEC. 31, T42, R23.

ON MAY 13, 2010, E.G. RUD AND SONS, INC. FOUND THIS MONUMENT, TOOK NEW TIES AND ESTABLISHED KANABEC COUNTY COORDINATES ON THIS POSITION.