

# CERTIFICATE OF LOCATION OF GOVERNMENT CORNER

East quarter Corner of Section 6, Township 42, Range 23, 4th P.M.

STATE OF MINNESOTA, County of KANABEC

At the corner location shown on the sketch:

*Found a Kanabec County Cast Monument in good condition.*

Kanabec County U.S. Survey Feet Coordinates  
NAD 1983, HARN 1996 Adjustment  
Obtained by RTK GPS Observation

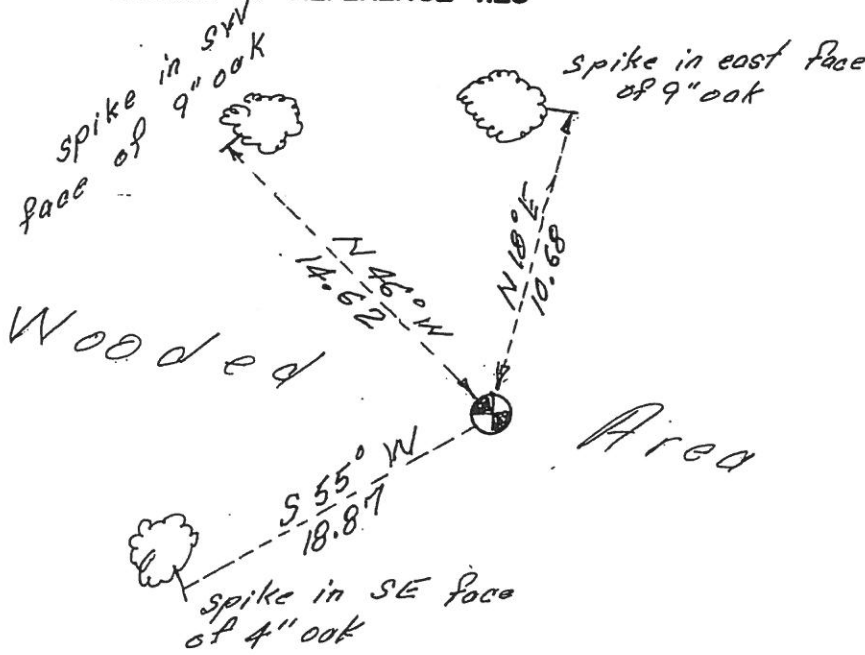
Northing= 254286.66

Easting= 402886.47

Note: NAD 1983, HARN 1996 Adjustment coordinates are NOT compatible with NAD 1983 coordinates

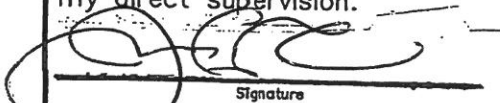
Note: 1 Meter=3937/1200 U.S. Survey Feet

### SKETCH OF REFERENCE TIES



Statement of evidence relative to this corner location is on back of page.

I hereby certify that this document and the data contained herein was prepared by me or under my direct supervision.

  
Signature

1-04-18  
Date

Registration No. 41578

Land Surveyor,  Professional Engineer

County Surveyor,  County Engineer

### OFFICE OF THE COUNTY RECORDER

County of \_\_\_\_\_

I hereby certify that this document was filed in the County Recorder's office at \_\_\_\_\_ M. on the \_\_\_\_\_ day of \_\_\_\_\_ A.D., 20\_\_\_\_

County Recorder \_\_\_\_\_

BY \_\_\_\_\_ Deputy

DOCUMENT NO. \_\_\_\_\_

East Quarter corner Section 6, Township 42, Range 23

4223133

In January 2018, E.G. Rud & Sons, Inc., while doing a survey in the Northeast Quarter and Northwest Quarter of Section 5 located a Kanabec County monument at this corner. It was set by County Surveyor M.B. Rude in March 1974 and placed by single proportionate measurement between the Northeast and Southeast corner of Section 6. No evidence of the original corner was found at that time. New ties were taken and Kanabec County coordinates established on this position.