

# CERTIFICATE OF LOCATION OF GOVERNMENT CORNER

East Quarter corner of Section 7, Township 42 North, Range 23 West,  
4th Principal Meridian, Kanabec County, State of Minnesota

At the corner location shown on the sketch:  
On 11/3/2015 found a 1 1/4" iron pipe. Left said monument as found.

Kanabec County U.S. Survey Feet Coordinates  
NAD 1983, HARN 1996 Adjustment  
Obtained by RTK GPS observation  
Northing: 248917.9130  
Easting: 402856.6190

Note: NAD 1983, HARN 1996 Adjustment  
coordinates are NOT compatible with  
NAD 1983 coordinates

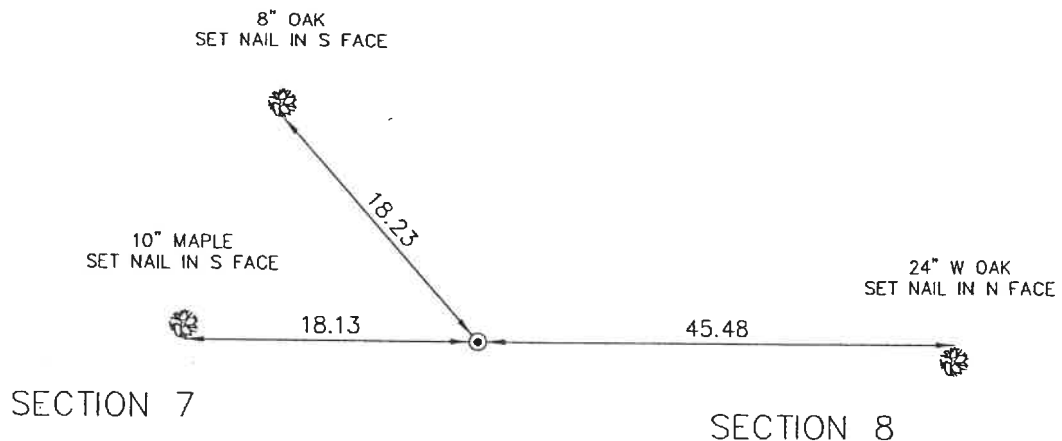
Note: 1 Meter = 3937/1200 U.S. Survey Feet

## SKETCH OF REFERENCE TIES

NOT TO SCALE

DISTANCE UNITS FOR THIS DRAWING IS  
U.S. SURVEY FEET

THE BASIS OF BEARINGS FOR THIS  
DRAWING IS THE KANABEC COUNTY  
COORDINATE SYSTEM BY MNDOT,  
NAD 1983, HARN 1996 ADJUSTMENT



**Kroschel Land Surveyors, Inc.**

1639 Main Street North, Suite 6, Pine City, MN 55063  
Phone: 320-629-3267 Fax: 320-629-0176

Statement of evidence relative to this corner location is on back of page.

I hereby certify that this report was prepared by me or under my direct supervision, that the United States public land survey monument record is correct and complete to the best of my knowledge and belief, and that I am a duly Licensed Land Surveyor under the laws of the State of Minnesota.

Tyler J. Kroschel, County Surveyor

3-1-2022  
Date

License No. 44490

**OFFICE OF THE COUNTY RECORDER**  
County of Kanabec

I hereby certify that this document was filed in the County Recorder's office at \_\_\_\_\_ .M. on the \_\_\_\_\_ day of \_\_\_\_\_ A.D., 20\_\_\_\_  
County Recorder \_\_\_\_\_, Deputy

**DOCUMENT NO.** \_\_\_\_\_

Statement of Evidence:

In October of 1857, Deputy Surveyor John M. Gay set a post to mark the East Quarter Corner of Section 7, Township 42 North, Range 23 West, 4th Principal Meridian.

Reference ties were taken to:

8 inch Birch at South 35 degrees 30 West a distance of 25 links  
Balsom at South 45 degrees East a distance of 20 links

All of the original Government corner evidence was searched for. None was found.

2010—MNDNR Surveyor John Walker, RLS 16098 made a survey in Section 8. His survey shows a monument at the West Quarter corner, but does not show if it was found or set and he did not file a Certificate of Location of Government Corner.

In November 2015, I made a survey around Section 8, Township 42 North, Range 23 West, 4th Principal Meridian for Milton Werner to locate existing monuments, lines of occupation and establish search areas.

On 11/3/2015, I found a 1-1/4" Iron Pipe monument at the corner location. Said monument was very close to being on line and at a proportional distance between the NE and SE corners of Section 7. I accepted the found Iron Pipe as the best available evidence of the original corner monument location. Established reference ties and assigned Kanabec County Coordinates. The origin of the found Iron Pipe is not known.