

CERTIFICATE OF LOCATION OF GOVERNMENT CORNER

NORTH QUARTER Corner of Section 18, Township 42, Range 23, 4TH P.M.

STATE OF MINNESOTA, County of KANABEC

At the corner location shown on the sketch:
 FOUND A 1/2 INCH IRON PIPE.

Kanabec County U.S. Survey Feet Coordinates
 NAD 1983, HARN 1996 Adjustment
 Obtained by RTK GPS Observation

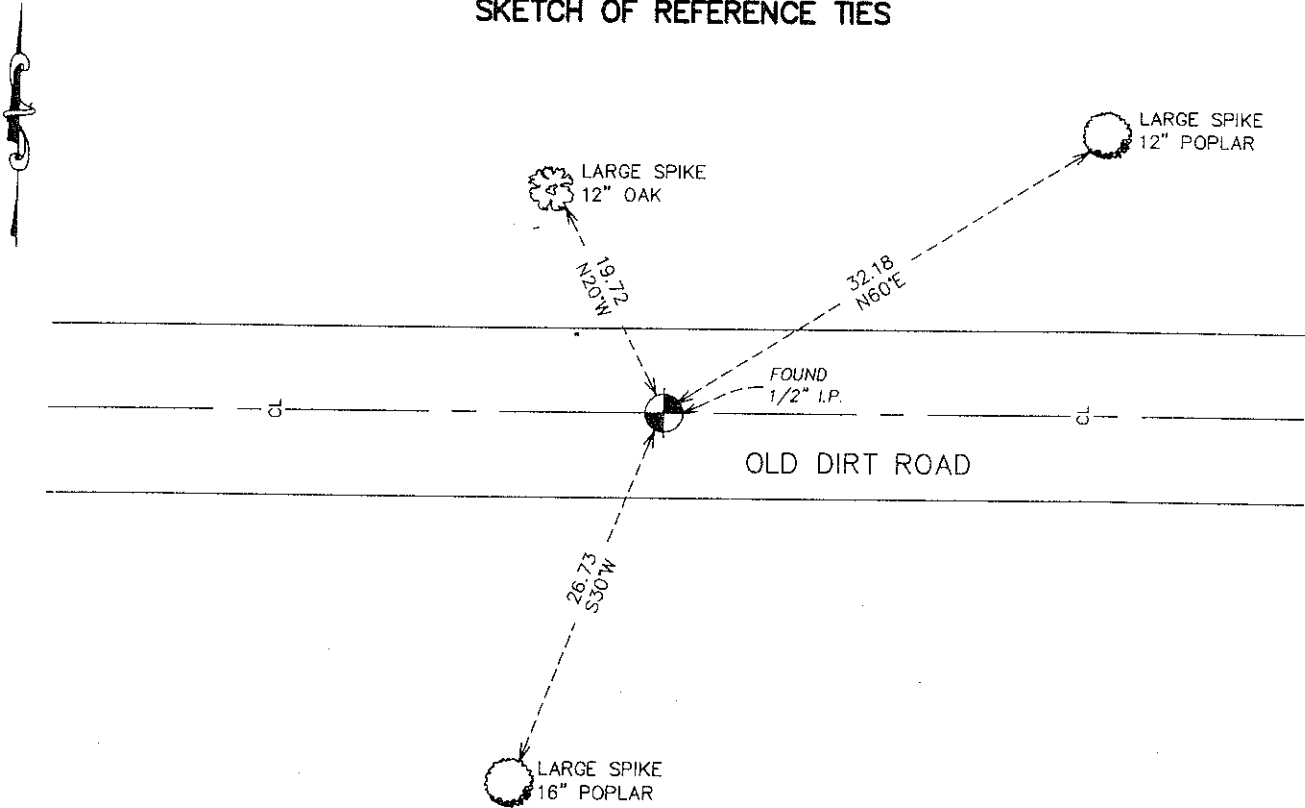
Northing= 246151.52

Easting= 400273.56

Note: NAD 1983, HARN 1996 Adjustment
 coordinates are NOT compatible with
 NAD 1983 coordinates

Note: 1 Meter=3937/1200 U.S. Survey Feet

SKETCH OF REFERENCE TIES



Statement of evidence relative to this corner location is on back of page.

I hereby certify that this document and the data contained herein was prepared by me or under my direct supervision.

Ernest Blud
 Signature

2-07-2008
 Date

Registration No. 9808

- Land Surveyor, Professional Engineer
 County Surveyor, County Engineer

OFFICE OF THE COUNTY RECORDER

County of _____

I hereby certify that this document was filed in the County Recorder's office at _____ M. on the

_____ day of _____ A.D., 20__

County Recorder _____

BY _____ Deputy

DOCUMENT NO. _____

NORTH QUARTER CORNER SECTION 18, TOWNSHIP 42, RANGE 23

STATEMENT OF EVIDENCE

THE ORIGINAL GOVERNMENT CORNER WAS SET BY DEPUTY SURVEYOR JOHN M. GIAY ON OCTOBER 25, 1851 AND 2 PINE TREES WERE ESTABLISHED AS BEARING TREES. NO VISIBLE EVIDENCE REMAINS FOR THE CORNER OR BEARING TREE TODAY. NO RECORDS OF ANY SUBSEQUENT SURVEYS ALONG THIS LINE COULD BE FOUND AT THE KANABEC COUNTY OFFICES.

(1970)

IN THE 1970'S NORM HOIUM RAN A SURVEY ALONG THE NORTH LINE OF SECTION 18 AND SET A 1/2 INCH IRON PIPE AT THIS CORNER ON THE CENTERLINE OF AN OLD ROAD BED.

(2007)

IN DECEMBER 2007 E.G. RUD & SONS, INC. DID A SURVEY AROUND SECTION 7 AND FOUND THIS IRON PIPE AND IT MEASURED WITHIN 0.08 OF A FOOT OF WHAT NORM HAS MEASURED. THIS IRON PIPE WAS ACCEPTED AS THE BEST EVIDENCE FOR THE CORNER, TIES WERE TAKEN AND KANABEC COUNTY COORDINATES WERE ESTABLISHED ON THIS POSITION USING GLOBAL POSITIONING SYSTEM (G.P.S.) EQUIPMENT.