

CERTIFICATE OF LOCATION OF GOVERNMENT CORNER

EAST QUARTER Corner of Section 18, Township 42, Range 23, 4TH P.M.
 STATE OF MINNESOTA, County of KANABEC

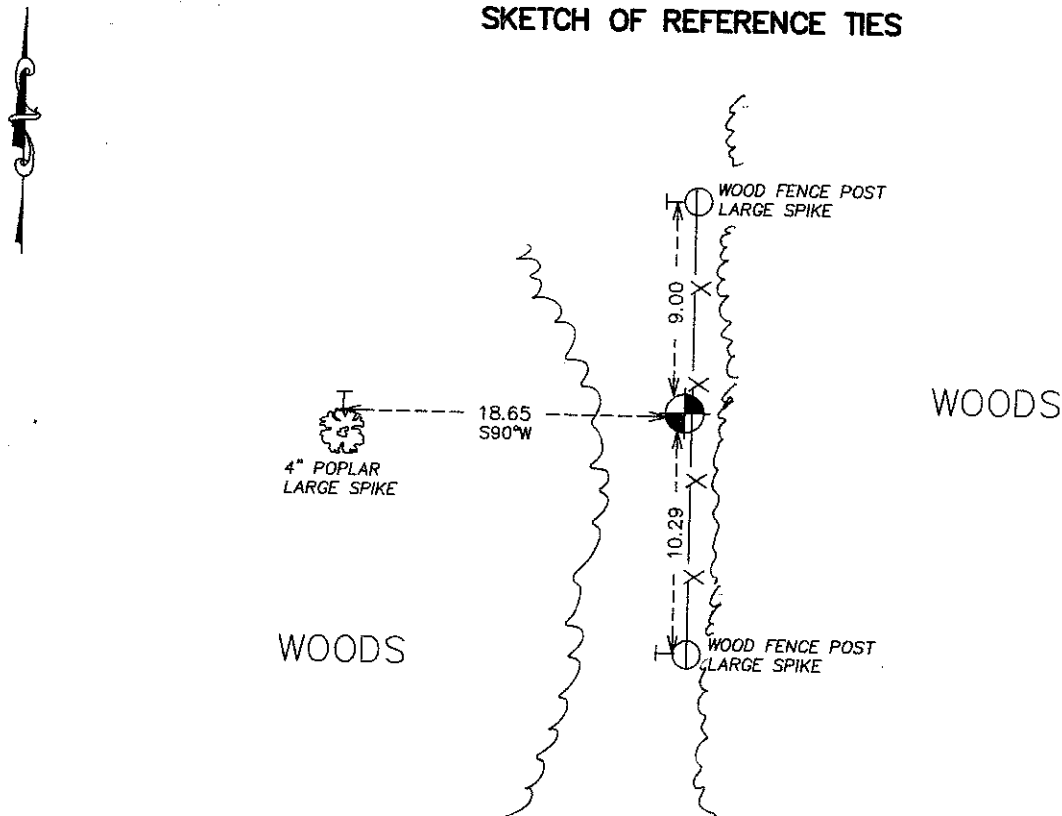
At the corner location shown on the sketch:
 SET A 7/8" REBAR AND ALUMINUM CAP ON TOP.

Kanabec County U.S. Survey Feet Coordinates
 NAD 1983, HARN 1996 Adjustment
 Obtained by RTK GPS Observation

Northing= 243589.10
 Easting= 402745.220

Note: NAD 1983, HARN 1996 Adjustment
 coordinates are NOT compatible with
 NAD 1983 coordinates
 Note: 1 Meter=3937/1200 U.S. Survey Feet

SKETCH OF REFERENCE TIES



Statement of evidence relative to this corner location is on back of page.

I hereby certify that this document and the data contained herein was prepared by me or under my direct supervision.

Ernest J. Rud
 Signature

2-04-2008
 Date

Registration No. 9808

Land Surveyor, [] Professional Engineer

[] County Surveyor, [] County Engineer

OFFICE OF THE COUNTY RECORDER

County of _____

I hereby certify that this document was filed in the County Recorder's office at _____ M. on the _____ day of _____ A.D., 20____

County Recorder _____

BY _____ Deputy

DOCUMENT NO. _____

EAST QUARTER CORNER SECTION 18, TOWNSHIP 42, RANGE 23

STATEMENT OF EVIDENCE

THE ORIGINAL CORNER POST WAS SET BY DEPUTY SURVEYOR JOHN M. GIAY ON OCTOBER 25, 1851 AND 2 BEARING TREES ESTABLISHED. NO EVIDENCE REMAINS FOR THE CORNER OR BEARING TREES COULD BE FOUND. NO RECORD OF SUBSEQUENT SURVEYS COULD BE FOUND AT KANABEC COUNTY OFFICES.

THIS CORNER FALLS ON A NORTH-SOUTH FENCE LINE BUT NO LINE OF OCCUPATION RUNNING EAST OR WEST. THIS FENCE LINE WAS USED IN A SURVEY IN SECTION 17 BY M.B. RUDE.

IN DECEMBER 2007 E.G. RUD & SONS, INC. SET A #7 REBAR 24" LONG WITH AN ALUMINUM CAP ON TOP AT A PROPORTIONAL DISTANCE BETWEEN THE NORTHEAST AND SOUTHEAST CORNERS OF SECTION 18 AND ON THE FENCE LINE. THIS WAS WITHIN 7 FEET OF BEING ON LINE BETWEEN THE NORTHEAST AND SOUTHEAST CORNERS. TIES WERE TAKEN AND KANABEC COUNTY COORDINATES WERE ESTABLISHED ON THIS CORNER.