

CERTIFICATE OF LOCATION OF GOVERNMENT CORNER

NORTH QUARTER Corner of Section 19, Township 42, Range 23, 4TH P.M.

STATE OF MINNESOTA, County of KANABEC

At the corner location shown on the sketch:
IN MAY 2010 SET A 1/2" BY 24" IRON PIPE WITH ALUMINUM CAP

Kanabec County U.S. Survey Feet Coordinates
NAD 1983, HARN 1996 Adjustment
Obtained by RTK GPS Observation

Northing= 240875.12

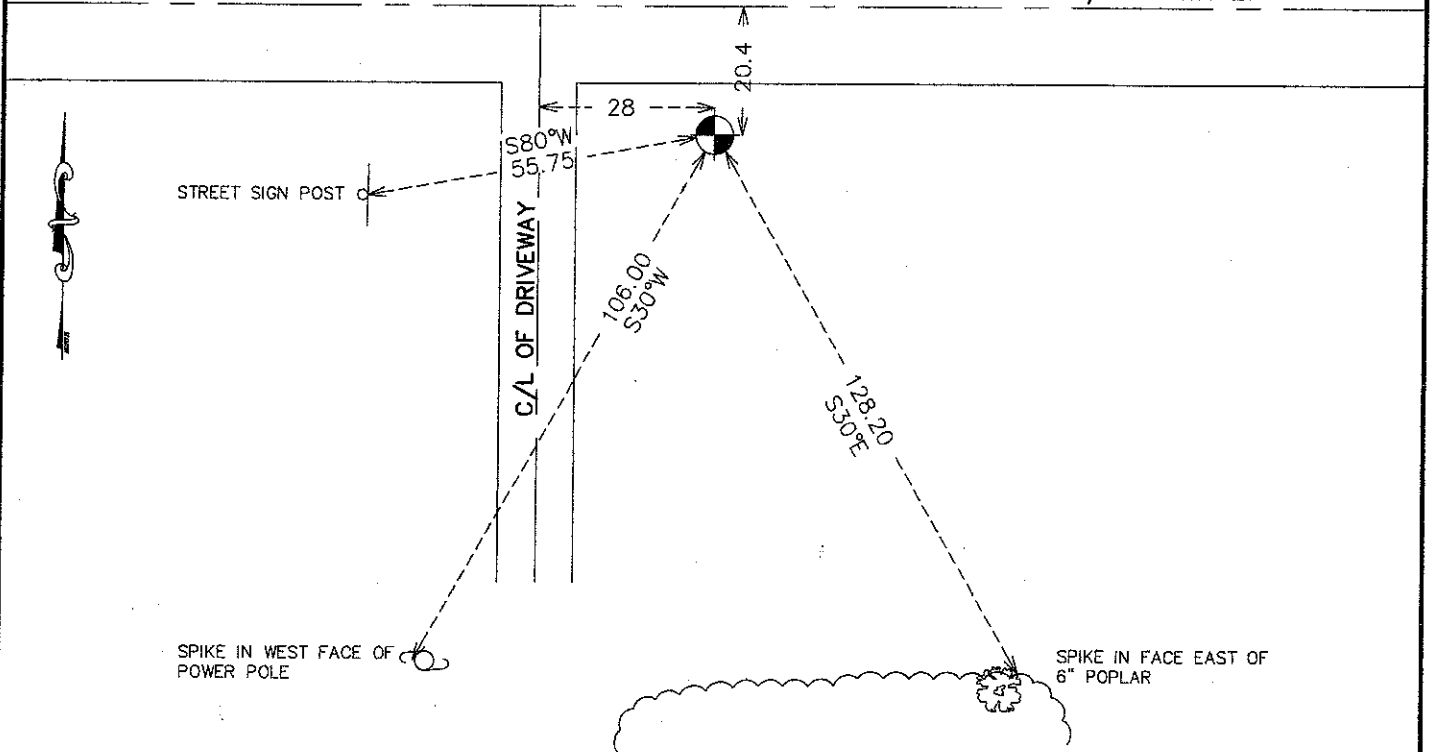
Easting= 399920.35

Note: NAD 1983, HARN 1996 Adjustment
coordinates are NOT compatible with
NAD 1983 coordinates

Note: 1 Meter=3937/1200 U.S. Survey Feet

SKETCH OF REFERENCE TIES

C/L OF HWY 27



Statement of evidence relative to this corner location is on back of page.

I hereby certify that this document and the data contained herein was prepared by me or under my direct supervision.

Ernest Rud
Signature

11-27-10
Date

Registration No. 9808

- Land Surveyor, Professional Engineer
- County Surveyor, County Engineer

OFFICE OF THE COUNTY RECORDER

County of _____

I hereby certify that this document was filed in the County Recorder's office at _____ M. on the _____ day of _____ A.D., 20____

County Recorder _____

BY _____ Deputy

DOCUMENT NO. _____

N1/4 CORNER, SEC. 19, T42, R23

STATEMENT OF EVIDENCE

ON OCT. 22, 1851 THE ORIGINAL GOV'T CORNER WAS SET BY U.S. DEPUTY SURVEYOR AND 2 BEARING TREES NOTED:

12" BALSAM @ 23 LINKS BEARING N70°E

12" ASH @ 20 LINKS BEARING S01°W

NO EVIDENCE REMAINS OF THE CORNER OR THE BEARING TREES REMAIN TODAY.

THE GOV'T NOTES STATE THE NORTH LINE OF SEC. 19 IS 83.40 CHAINS OR 5504.40 FEET.

IN APRIL 1909, JOHN NELSON MADE A SURVEY OF SEVERAL ROADS IN HAYBROOK TOWNSHIP AND HE RETRACED THE NORTH LINE OF SEC. 19 AND FOUND THIS LINE TO BE 80.69 CHAINS AND NOTED IT WAS 2.71 CHAINS SHORTER THAN THE GLO NOTES. JOHN NELSON DID NOT NOTE THAT HE FOUND THE N1/4 CORNER OF SEC. 19, BUT FOUND 3 WITNESS TREES AT THE NW AND NE CORNERS OF SEC. 19. JOHN SET THE N1/4 CORNER AT 40 CHAINS FROM THE NE CORNER. JOHNS OVERALL DISTANCE ACROSS THE NORTH LINE OF SEC. 19 WAS 80.69 CHAINS OR 5325.54 FEET. TODAY WE MEASURE THE DISTANCE TO BE 5338.48 FEET.

IN THE RECONSTRUCTION OF TRUNK HWY 27 THE STATE NOTED ON THEIR PLANS THAT THIS CORNER 20.4 FEET SOUTH OF THE NEW CENTERLINE OF HWY 27 AND ON A FENCE LINE GOING NORTH. THE DISTANCE TO THE NE CORNER WAS 2639.8 FEET.

IN MAY 2010, E.G. RUD AND SONS, INC. RAN A SURVEY AROUND SEC. 19, 30 AND 31 TO LOCATE EXISTING MONUMENTATION AND LINES OF OCCUPATION. THE FENCE LINE GOING NORTH IS NO LONGER IN PLACE. THEREFORE THIS CORNER WAS SET AS A LOST CORNER, ON LINE AND AT A PROPORTIONATE DISTANCE BETWEEN THE NW AND NE CORNERS OF SEC. 19. THIS FELL 20.4 FEET SOUTH OF THE CENTERLINE OF HWY 27 AND 6± FEET WEST OF AN APPARENT OCCUPATION LINE TO THE NORTH. AN IRON PIPE WITH AN ALUMINUM CAP WAS SET, TIES TAKEN AND KANABEC COUNTY COORDINATES WERE ESTABLISHED ON THIS POSITION. *Our distance along NE 1/4 is 2646.4 feet.*