

CERTIFICATE OF LOCATION OF GOVERNMENT CORNER

N 1/4 Corner of Section 20, Township 42, Range 23, 4TH P.M.

STATE OF MINNESOTA, County of KANABEC

At the corner location shown on the sketch:

*Set P.K. in frozen roadbed.
Monument to be set in summer.*

Kanabec County U.S. Survey Feet Coordinates
NAD 1983, HARN 1996 Adjustment
Obtained by RTK GPS Observation

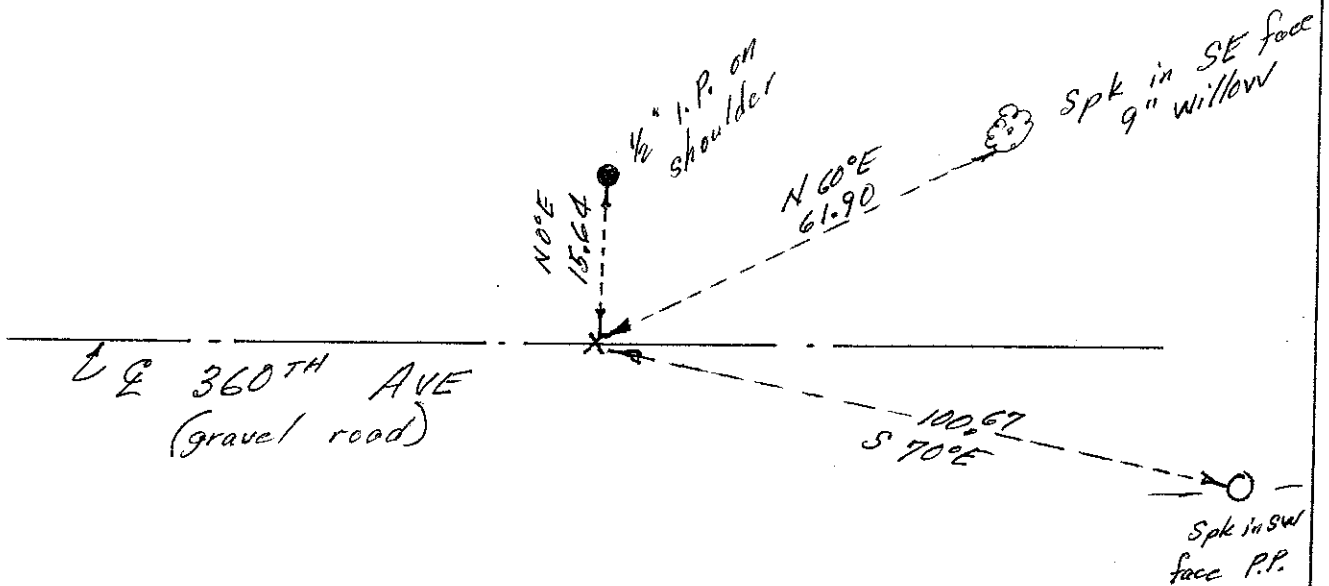
Northing= 240889.48

Easting= 405221.84

Note: NAD 1983, HARN 1996 Adjustment
coordinates are NOT compatible with
NAD 1983 coordinates

Note: 1 Meter=3937/1200 U.S. Survey Feet

SKETCH OF REFERENCE TIES



Statement of evidence relative to this corner location is on back of page.

I hereby certify that this document and the data contained herein was prepared by me or under my direct supervision.

Ernest J. Rud 11-12-12
Signature Date

Registration No. Minn No. 9808

- Land Surveyor, Professional Engineer
- County Surveyor, County Engineer

OFFICE OF THE COUNTY RECORDER

County of _____

I hereby certify that this document was filed in the County Recorder's office at _____ M. on the

_____ day of _____ A.D., 20__

County Recorder _____

BY _____ Deputy

DOCUMENT NO. _____

STATEMENT OF EVIDENCE: NORTH QUARTER 20-42-23 4223123

The original government post was set by Deputy Surveyor, John M. Giay in October 1851 and 2 Tamarack trees were noted as bearing trees:

6" Tamarack bearing South 62 degrees East at 30 links

6" Tamarack bearing South 36 degrees West at 40 links

This corner was set in a Tamarack swamp and no visible evidence remains for the corner or accessories.

A road survey was made by John Nelson on April 4, 1909 and a government post was found at this corner in a Tamarack swamp. This corner falls in the centerline of a county road running east-west and about 70 feet west of high land. On December 27, 2011 E. G. Rud & Sons did a survey in Section 17 and set a point on line and split between the Southeast and Southwest corners of Section 17 as this is what Nelson had found. This position fit the 1/16 lines in Section 17 and also the government call to edge of swamp. No excavation was made as boulders have been hauled in to cross the swamp. A temporary concrete nail was set, ties taken and Kanabec County coordinates established.