

CERTIFICATE OF LOCATION OF GOVERNMENT CORNER

 EAST QUARTER Corner of Section 19, Township 42, Range 23, 4TH P.M.

STATE OF MINNESOTA, County of KANABEC

At the corner location shown on the sketch:
SET A 1/2" BY 24" IRON PIPE WITH ALUMINUM CAP

Kanabec County U.S. Survey Feet Coordinates
NAD 1983, HARN 1996 Adjustment
Obtained by RTK GPS Observation

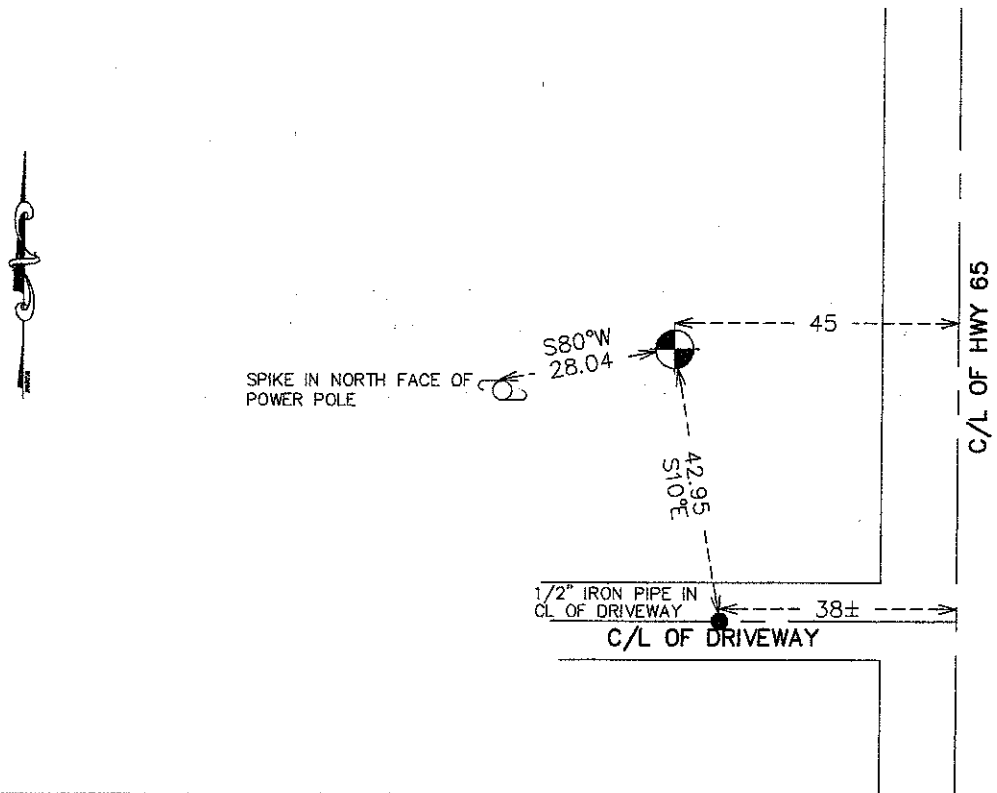
Northing= 238280.97

Easting= 402537.27

Note: NAD 1983, HARN 1996 Adjustment
coordinates are NOT compatible with
NAD 1983 coordinates.

Note: 1 Meter=3937/1200 U.S. Survey Feet

SKETCH OF REFERENCE TIES



Statement of evidence relative to this corner location is on back of page.

I hereby certify that this document and the data contained herein was prepared by me or under my direct supervision.

Ernest J. Reed
Signature

11-27-10
Date

Registration No. 9808

- Land Surveyor, Professional Engineer
 County Surveyor, County Engineer

OFFICE OF THE COUNTY RECORDER

County of

I hereby certify that this document was filed in the County Recorder's office at M. on the day of A.D., 20

County Recorder

BY Deputy

DOCUMENT NO.

E1/4 CORNER, SEC. 19, T42, R23

STATEMENT OF EVIDENCE

THE ORIGINAL GOV'T CORNER WAS SET BY DEPUTY SURVEYOR JOHN M. GLEY ON OCT. 21, 1851 AND BEARING TREES NOTED AS:

12" BALSAM @ 23 LINKS BEARING N78°E

12" ASH @ 20 LINKS BEARING S41°W

NO EVIDENCE REMAINS OF THE CORNER OR THE BEARING TREES REMAIN TODAY.

NO RECORDS OF ANY SUBSEQUENT SURVEYS COULD BE FOUND AT THE KANABEC COUNTY OFFICES.

RIGHT OF WAY PLANS FOR HWY 65 INDICATE NO PHYSICAL EVIDENCE BEING PRESENT WHEN HWY 65 WAS RECONSTRUCTED.

NO OCCUPATION LINES ARE APPARENT AT THIS LOCATION.

THEREFORE WE SET THIS AS A LOST CORNER AND SET IT ON LINE AND EQUIDISTANT FROM THE NE AND SE CORNERS OF SEC. 19. THIS FELL 45 FEET WEST OF THE CENTERLINE OF HWY 65. A 1/2" IRON PIPE WITH AN ALUMINUM CAP WAS SET, TIES TAKEN AND KANABEC COUNTY COORDINATES WERE ESTABLISHED ON THIS POSITION.