

# CERTIFICATE OF LOCATION OF GOVERNMENT CORNER

NORTH QUARTER Corner of Section 30, Township 42, Range 23, 4TH P.M.

STATE OF MINNESOTA, County of KANABEC

At the corner location shown on the sketch:  
ON 6/30/10 SET A REBAR WITH AN ALUMINUM CAP

Kanabec County U.S. Survey Feet Coordinates  
NAD 1983, HARN 1996 Adjustment  
Obtained by RTK GPS Observation

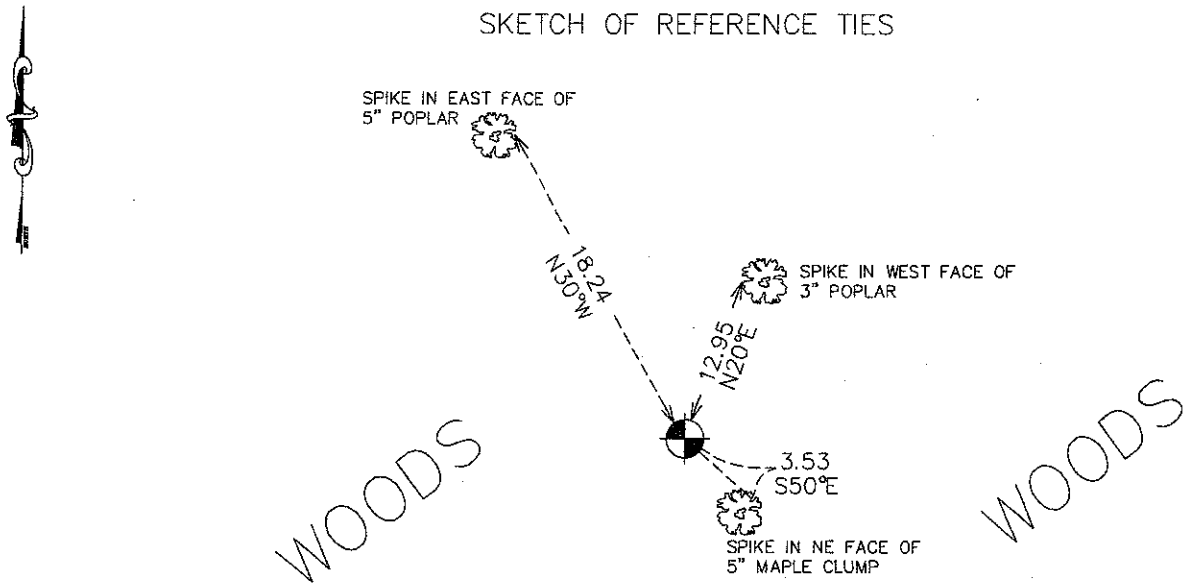
Northing= 235577.170

Easting= 399860.231

Note: NAD 1983, HARN 1996 Adjustment  
coordinates are NOT compatible with  
NAD 1983 coordinates

Note: 1 Meter=3937/1200 U.S. Survey Feet

### SKETCH OF REFERENCE TIES



Statement of evidence relative to this corner location is on back of page.

I hereby certify that this document and the data contained herein was prepared by me or under my direct supervision.

*Ernest J. Rud*  
Signature

11-27-10  
Date

Registration No. 9808

Land Surveyor,       Professional Engineer

County Surveyor,       County Engineer

### OFFICE OF THE COUNTY RECORDER

County of \_\_\_\_\_

I hereby certify that this document was filed in the County Recorder's office at \_\_\_\_\_ M. on the

\_\_\_\_\_ day of \_\_\_\_\_ A.D., 20\_\_

County Recorder \_\_\_\_\_

BY \_\_\_\_\_ Deputy

DOCUMENT NO. \_\_\_\_\_

N1/4 CORNER, SEC. 30, T42, R23

**STATEMENT OF EVIDENCE**

**THE ORIGINAL CORNER WAS SET BY DEPUTY SURVEYOR JOHN M. GLEY ON OCT. 21, 1851 AND 2 BEARING TREES DESCRIBED AS:**

**10" SUGAR MAPLE @ 7 LINKS BEARING N23.5°E**

**14" LYNN MAPLE @ 14 LINKS BEARING S42°E**

**NO EVIDENCE REMAINS OF THE CORNER OR THE BEARING TREES. GLEY'S MEASUREMENT ACROSS THE NORTH LINE OF SEC. 30 WAS 83 CHAINS OR 5478 FEET. GLEY'S MEASUREMENT ACROSS THE NORTH LINE OF SEC. 19 WAS 83.4 CHAINS OR 5504.4 FEET. JOHN NELSON, IN 1909, MEASURED THE NORTH LINE OF SEC. 19 TO BE 80.69 CHAINS OR 5325.54 FEET. WE MEASURED THE NORTH LINE OF SEC. 19 TO BE 5338.48 FEET TODAY AND THE NORTH LINE OF SEC. 30 TO BE 5394.24 FEET. ON THE SOUTH LINE OF SEC. 31 WE FOUND AN APPROXIMATE SURPLUS OF 30 FEET FROM THE GOV'T CHAINAGE. WHEN WE PRORATE GOV'T CHAINAGE FROM THE SOUTH LINE OF SEC. 31 TO JOHN NELSON'S CHAINAGE ON THE NORTH LINE OF SEC. 19 AND APPLY TO THE SOUTH LINES OF SEC. 19 AND SEC. 30 WE CAME UP WITH AN 18 FOOT SURPLUS ON THE SOUTH LINE OF SEC. 19 AND A 33 FOOT SURPLUS ON THE SOUTH LINE OF SEC. 30. THIS IS CONSISTANT WITH SURPLUS ON THE TOWNSHIP LINE.**

**NO RECORDS OF ANY PREVIOUS SURVEYS ALONG THIS LINE COULD BE FOUND AT THE KANABEC COUNTY OFFICES.**

**THEREFORE WE SET THIS CORNER ON LINE BETWEEN THE NW AND NE CORNERS OF SEC. 30 AND AT A PRORATED DISTANCE. A 7/8" BY 24" REBAR WITH AN ALUMINUM CAP WAS SET, TIES TAKEN AND KANABEC COUNTY COORDINATES WERE ESTABLISHED ON THIS POSITION.**