

# CERTIFICATE OF LOCATION OF GOVERNMENT CORNER

NORTHEAST Corner of Section 30, Township 42, Range 23, 4TH P.M.

STATE OF MINNESOTA, County of KANABEC

At the corner location shown on the sketch:  
SET A 1/2" IRON PIPE WITH AN ALUMINUM CAP

Kanabec County U.S. Survey Feet Coordinates  
NAD 1983; HARN 1996 Adjustment  
Obtained by RTK GPS Observation

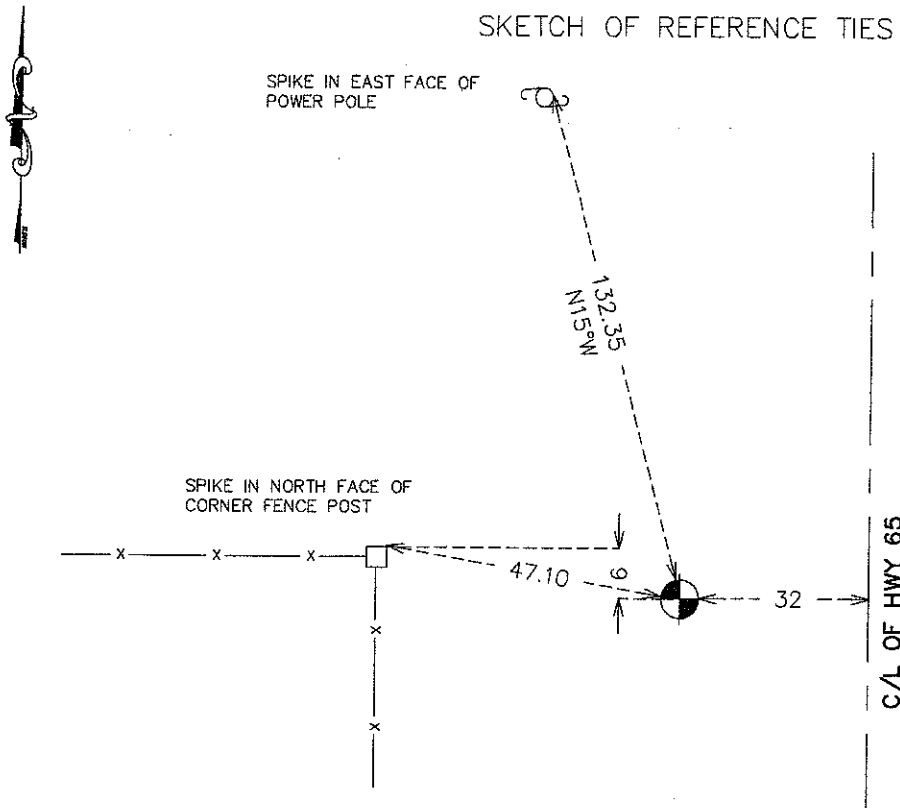
Northing= 235616.81

Easting= 402508.70

Note: NAD 1983, HARN 1996 Adjustment  
coordinates are NOT compatible with  
NAD 1983 coordinates

Note: 1 Meter=3937/1200 U.S. Survey Feet

## SKETCH OF REFERENCE TIES



Statement of evidence relative to this corner location is on back of page.

I hereby certify that this document and the data contained herein was prepared by me or under my direct supervision.

*Ernest J. Kud*                      11-27-10  
Signature                                      Date

Registration No. 9808

Land Surveyor,             Professional Engineer  
 County Surveyor,         County Engineer

### OFFICE OF THE COUNTY RECORDER

County of \_\_\_\_\_

I hereby certify that this document was filed in the County Recorder's office at \_\_\_\_\_ M. on the

\_\_\_\_\_ day of \_\_\_\_\_ A.D., 20\_\_

County Recorder \_\_\_\_\_

BY \_\_\_\_\_ Deputy

**DOCUMENT NO.** \_\_\_\_\_

E1/4 CORNER, SEC. 19, T42, R23

**STATEMENT OF EVIDENCE**

**THE ORIGINAL CORNER WAS SET BY DEPUTY SURVEYOR JOHN M. GLEY ON OCT. 31, 1851 AND BEARING TREES NOTED AS:**

**8" MAPLE @ 10 LINKS BEARING N60°E**

**8" BALSAM @ 20 LINKS BEARING N80°W**

**NO EVIDENCE REMAINS TODAY FOR THE CORNER OR THE BEARING TREES. NO RECORDS OF ANY SUBSEQUENT SURVEYS COULD BE FOUND AT THE KANABEC COUNTY OFFICES. RIGHT OF WAY PLANS FOR HWY 65 INDICATE NO PHYSICAL EVIDENCE BEING PRESENT WHEN HWY 65 WAS RECONSTRUCTED. THERE IS A FENCE LINE RUNNING TH THE WEST WHICH FALLS 6 FEET NORTH OF A LOST POSITION.**

**THEREFORE WE SET THIS AS A LOST CORNER AND SET IT ON LINE AND EQUIDISTANT FROM THE NE AND SE CORNERS OF SEC. 19. THIS FELL 32 FEET WEST OF THE CENTERLINE OF HWY 65. A 1/2" IRON PIPE WITH AN ALUMINUM CAP WAS SET, TIES TAKEN AND KANABEC COUNTY COORDINATES WERE ESTABLISHED ON THIS POSITION.**