

CERTIFICATE OF LOCATION OF GOVERNMENT CORNER

EAST QUARTER Corner of Section 30, Township 42, Range 23, 4TH P.M.

STATE OF MINNESOTA, County of KANABEC

At the corner location shown on the sketch:
ON 6/30/2010 SET #7 BY 24" REBAR W/ALUMINUM CAP

Kanabec County U.S. Survey Feet Coordinates
NAD 1983, HARN 1996 Adjustment
Obtained by RTK GPS Observation

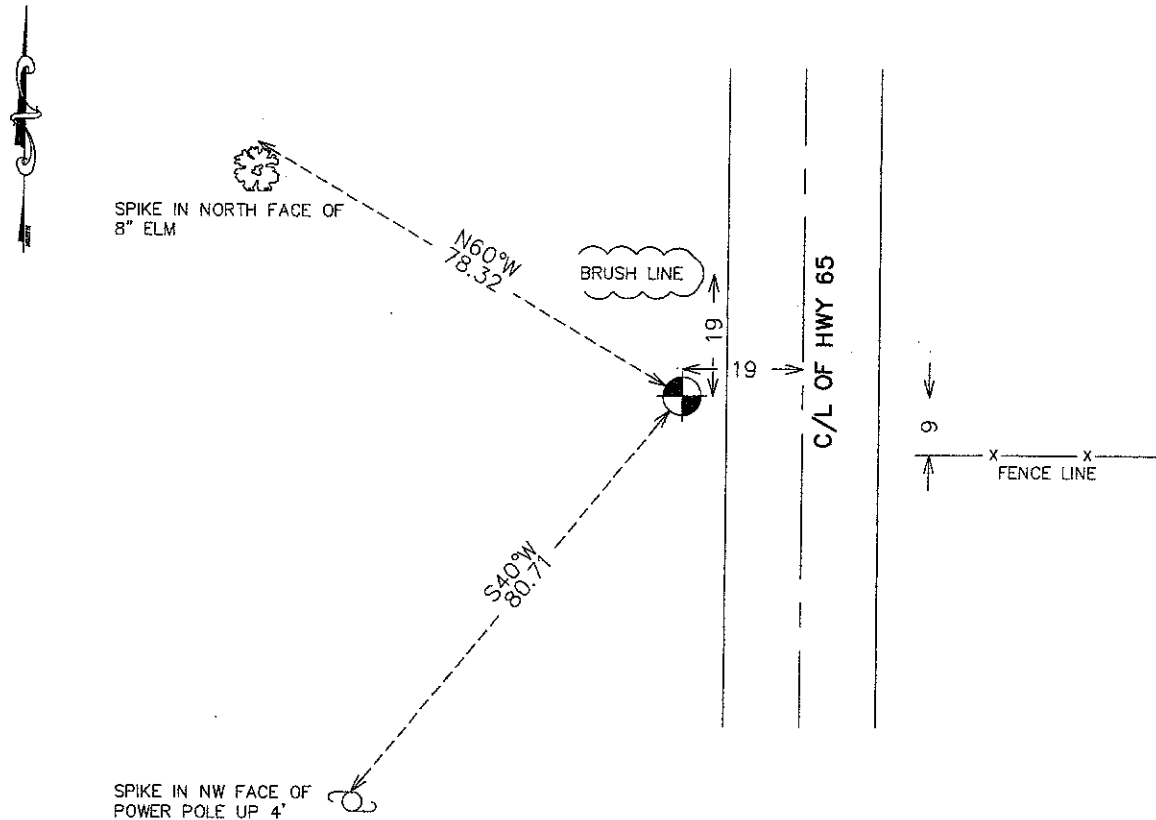
Northing= 232952.664

Easting= 402480.139

Note: NAD 1983, HARN 1996 Adjustment
coordinates are NOT compatible with
NAD 1983 coordinates

Note: 1 Meter=3937/1200 U.S. Survey Feet

SKETCH OF REFERENCE TIES



Statement of evidence relative to this corner location is on back of page.

I hereby certify that this document and the data contained herein was prepared by me or under my direct supervision.

[Signature]
Signature

11-27-10
Date

Registration No. 9808

- Land Surveyor, Professional Engineer
 County Surveyor, County Engineer

OFFICE OF THE COUNTY RECORDER

County of _____

I hereby certify that this document was filed in the County Recorder's office at _____ M. on the _____ day of _____ A.D., 20____

County Recorder _____

BY _____ Deputy

BY _____ Deputy

DOCUMENT NO. _____

E1/4 CORNER, SEC. 30, T42, R23

STATEMENT OF EVIDENCE

THE ORIGINAL CORNER WAS SET BY DEPUTY SURVEYOR JOHN M. GLEY ON OCT. 21, 1851 AND 2 BEARING TREES NOTED:

8" ELM @ 15 LINKS BEARING S25°E

TAMARACK @ 37 LINKS BEARING N21°W

NO VISIBLE EVIDENCE REMAINS TODAY FOR THE CORNER OR THE BEARING TREES.

TODAY THIS CORNER FALLS WITHIN THE RIGHT OF WAY FOR TRUNK HWY 65.

NO SUBSEQUENT SURVEYS COULD BE FOUND AT THE KANABEC COUNTY OFFICES.

HWY 65 RIGHT OF WAY PLANS SHOW NO PHYSICAL EVIDENCE BEING PRESENT WHEN HWY 65 WAS RECONSTRUCTED. THE PLANS SHOW CORNER TO BE WEST OF THE NEW CENTERLINE.

THEREFORE WE TREATED THIS CORNER AS A LOST CORNER AND SET IT EQUIDISTANT BETWEEN THE NE AND SE CORNERS OF SEC. 30. A #7 BY 24" REBAR WITH AN ALUMINUM CAP WAS SET, TIES TAKEN AND KANABEC COUNTY COORDINATES WERE ESTABLISHED ON THIS POSITION.