

CERTIFICATE OF LOCATION OF GOVERNMENT CORNER

North Quarter Corner of Section 31, Township 42 North, Range 23 West,
4th Principal Meridian, Kanabec County, State of Minnesota

At the corner location shown on the sketch:

On 2/17/2017 set a 7/8" x 20" Rebar Monument with
Aluminum Cap at a lost position.

Kanabec County U.S. Survey Feet Coordinates
NAD 1983, HARN 1996 Adjustment
Obtained by RTK GPS observation
Northing: 230284.5318
Easting: 399882.0971

Note: NAD 1983, HARN 1996 Adjustment
coordinates are NOT compatible with
NAD 1983 coordinates

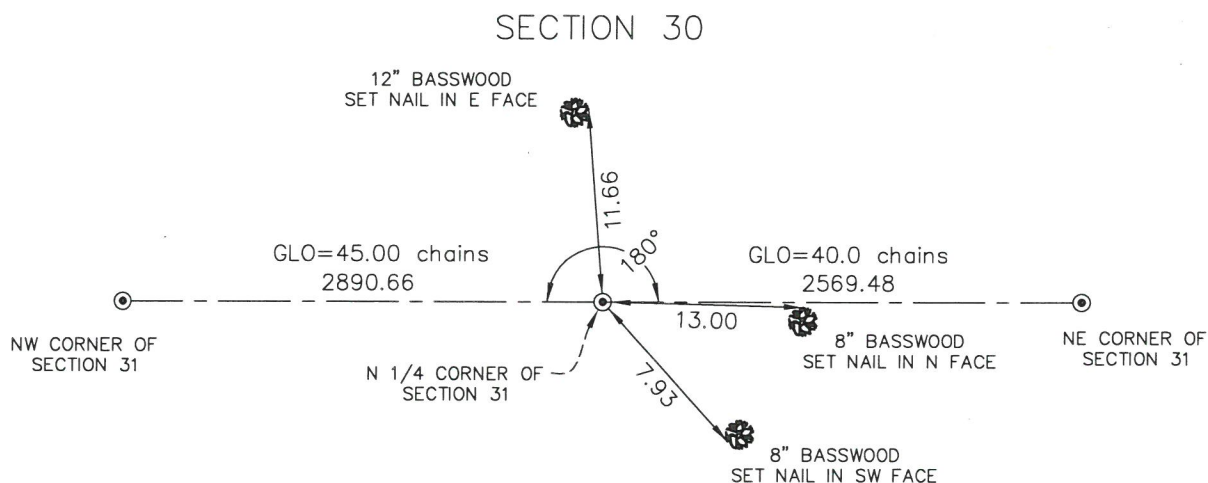
Note: 1 Meter = 3937/1200 U.S. Survey Feet

SKETCH OF REFERENCE TIES

NOT TO SCALE

KROSCHER LAND SURVEYORS, INC.
ASSUMES NO LIABILITY FOR THE ACCURACY
OF THE GPS COORDINATES SHOWN HEREON.
ALL COORDINATES AND DIMENSIONS
SHOULD BE FIELD VERIFIED BY THE USER.

THE BASIS OF BEARINGS FOR THIS
DRAWING IS THE KANABEC COUNTY
COORDINATE SYSTEM BY MNDOT,
NAD 1983, HARN 1996 ADJUSTMENT



SECTION 31



Kroschel Land Surveyors, Inc.

1639 Main Street North, Suite 6, Pine City, MN 55063
Phone: 320-629-3267 Fax: 320-629-0176

Statement of evidence relative to this corner location is on back of page.

I hereby certify that this survey, plan, or report was prepared by me or under my direct supervision, that the United States public land survey monument record is correct and complete to the best of my knowledge and belief, and that I am a duly Licensed Land Surveyor under the laws of the State of Minnesota.

Tyler J. Kroschel

Date

License No. 44490

☐ Land Surveyor

☒ County Surveyor

OFFICE OF THE COUNTY RECORDER

County of Kanabec

I hereby certify that this document was filed in the
County Recorder's office at _____ M. on the
_____ day of _____ A.D., 20____

County Recorder _____

By _____, Deputy

DOCUMENT NO. _____

Statement of Evidence:

In October of 1851, Deputy Surveyor John Gay set a post to mark the North Quarter Corner of Section 31, Township 42 North, Range 23 West, 4th Principal Meridian.

Reference ties were taken to:

- 6 inch Tamarack at South 87 degrees East a distance of 25 links
- 6 inch Spruce at South 14 degrees West a distance of 8 links

All of the original Government corner evidence was searched for. None was found.

There is no resurvey data available for this corner. There are no lines of occupation at or near this corner.

In February 2017, a survey was made around Section 31, Township 42 North, Range 23 West, 4th Principal Meridian for Mark Rislund to locate existing monuments, lines of occupation and establish search areas.

On February 17, 2017, a search was made by checking with a magnetic locator. No evidence of corner was found. I set a 7/8" x 20" Rebar with Aluminum Cap at a lost position between the Northeast and Northwest corners of Section 31. Established reference ties and assigned Kanabec County Coordinates.

This location was determined to be the best available evidence of the original corner location.



Kroschel Land Surveyors, Inc.

1639 Main Street North, Suite 6, Pine City, MN 55063
Phone: 320-629-3267 Fax: 320-629-0176