

# CERTIFICATE OF LOCATION OF GOVERNMENT CORNER

NORTHEAST Corner of Section 31, Township 42, Range 23, 4TH P.M.

STATE OF MINNESOTA, County of KANABEC

At the corner location shown on the sketch:  
 SET A PK NAIL 6' WEST OF THE CENTERLINE OF HWY 65  
 AND ON OCCUPATION LINE. NO MONUMENT WAS SET AS  
 HWY 65 WILL BE RECONSTRUCTED IN 2010.

Kanabec County U.S. Survey Feet Coordinates  
 NAD 1983, HARN 1996 Adjustment  
 Obtained by RTK GPS Observation

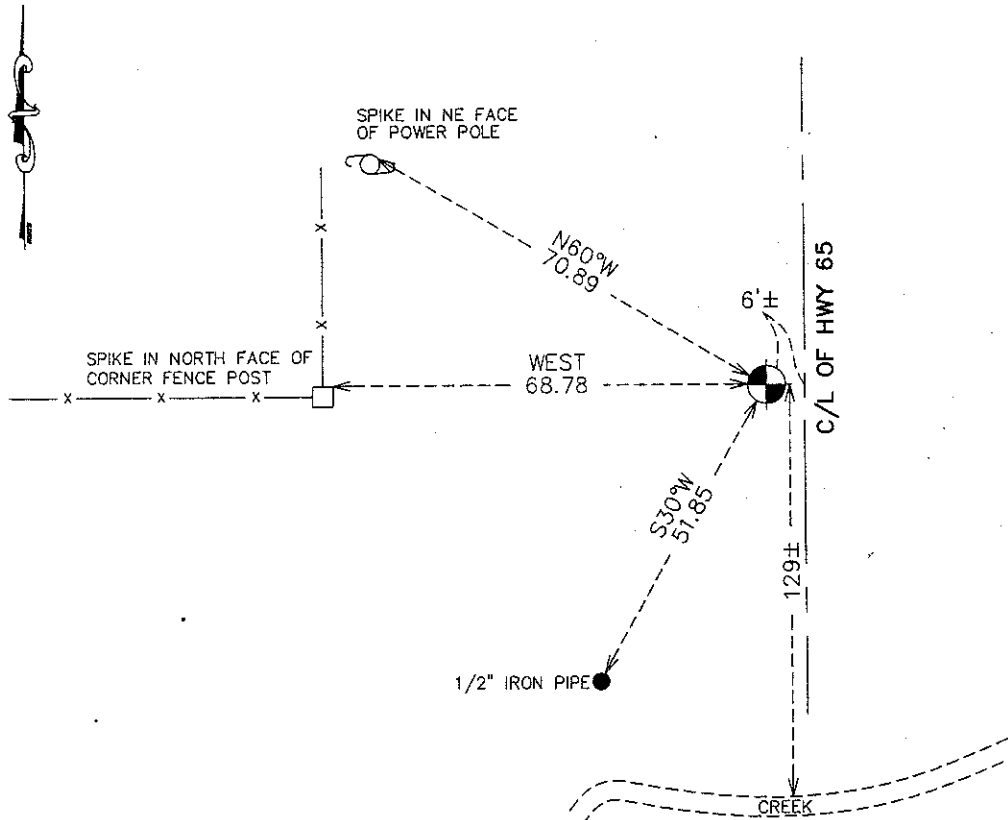
Northing= 230288.49

Easting= 402451.57

Note: NAD 1983, HARN 1996 Adjustment  
 coordinates are NOT compatible with  
 NAD 1983 coordinates

Note: 1 Meter=3937/1200 U.S. Survey Feet

### SKETCH OF REFERENCE TIES



Statement of evidence relative to this corner location is on back of page.

I hereby certify that this document and the data contained herein was prepared by me or under my direct supervision.

*Ernest J. Paul*  
 Signature

12-21-2010  
 Date

Registration No. 9808

- Land Surveyor,       Professional Engineer  
 County Surveyor,     County Engineer

### OFFICE OF THE COUNTY RECORDER

County of \_\_\_\_\_

I hereby certify that this document was filed in the County Recorder's office at \_\_\_\_\_ M. on the \_\_\_\_\_ day of \_\_\_\_\_ A.D., 20\_\_\_\_

County Recorder \_\_\_\_\_

BY \_\_\_\_\_ Deputy

**DOCUMENT NO.** \_\_\_\_\_

NE CORNER, SEC. 31, T42, R23

**STATEMENT OF EVIDENCE**

**THE ORIGINAL CORNER WAS SET BY DEPUTY SURVEYOR JOHN M. GLEY ON OCT. 21, 1851 AND 2 BEARING TREES NOTED:**

**20" PINE @ 45 LINKS BEARING N35°W**

**10" PINE @ 30 LINKS BEARING N35°E**

**NO VISIBLE EVIDENCE REMAINS TODAY FOR THE CORNER OR THE BEARING TREES.**

**IN GLO NOTES THIS CORNER FELL 1 CHAIN NORTH OF A CREEK 10 LINKS WIDE RUNNING SOUTHEAST.**

**NO RECORDS OF ANY SUBSEQUENT SURVEYS COULD BE FOUND AT THE KANABEC COUNTY OFFICES.**

**ON THE RIGHT OF WAY MAP FOR TRUNK HWY 65 IT SHOWS THIS CORNER TO BE 6 FEET WEST OF THE CENTERLINE OF NEW HWY 65 AND 5264 FEET NORTH OF THE SE CORNER OF SEC. 31. IT DOES NOT SHOW WHAT WAS IN PLACE AT THE TIME, BUT WAS PLUDED IN AT 136± FEET NORTH OF THE CREEK.**

**TODAY THERE IS AN OLD FENCE AND GOOD OCCUPATION LINE GOING WEST. THEREFORE WE SET THIS CORNER 6 FEET WEST OF THE CENTERLINE OF HWY 65 AND ON THE EXTENSION OF THE FENCE LINE. THIS FELL 129± FEET NORTH OF THE CREEK CROSSING HWY 65 AND 5279 FEET NORTH OF THE SE CORNER OF SEC. 31. A PK NAIL WAS SET INSTEAD OF A MONUMENT AS HWY 65 IS BEING RECONSTRUCTED IN THE FALL OF 2010. TIES WERE TAKEN AND KANABEC COUNTY COORDINATES WERE ESTABLISHED ON THIS POSITION.**