

CERTIFICATE OF LOCATION OF GOVERNMENT CORNER

EAST QUARTER Corner of Section 31, Township 42, Range 23, 4TH P.M.

STATE OF MINNESOTA, County of KANABEC

At the corner location shown on the sketch:
SET A PK NAIL 3' WEST OF THE CENTERLINE OF HWY 65.
NO MONUMENT WAS SET AS HWY 65 WILL BE RECONSTRUCTED
IN 2010.

Kanabec County U.S. Survey Feet Coordinates
NAD 1983, HARN 1996 Adjustment
Obtained by RTK GPS Observation

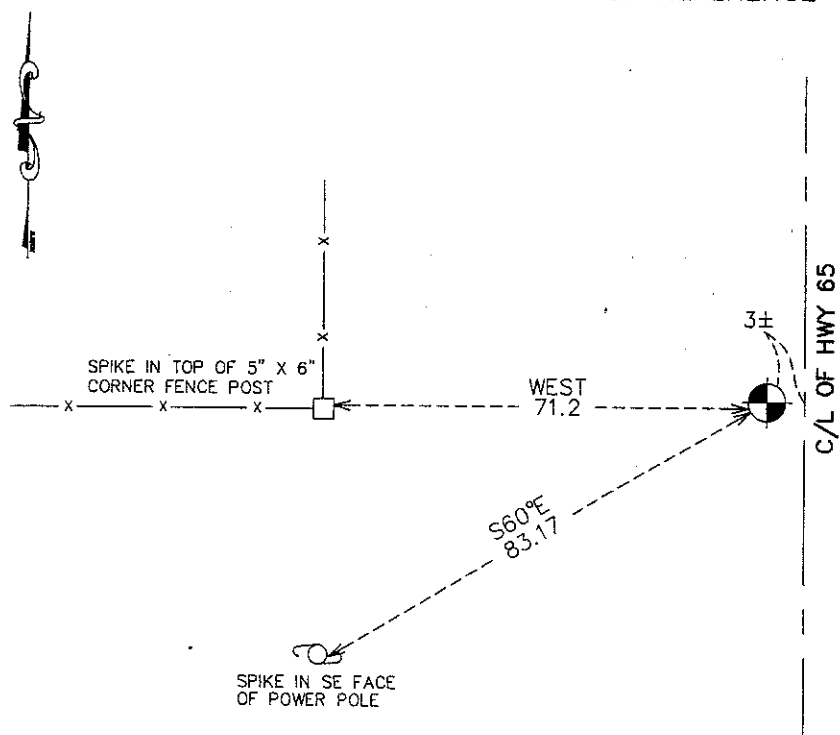
Northing= 227632.48

Easting= 402413.31

Note: NAD 1983, HARN 1996 Adjustment
coordinates are NOT compatible with
NAD 1983 coordinates

Note: 1 Meter=3937/1200 U.S. Survey Feet

SKETCH OF REFERENCE TIES



Statement of evidence relative to this corner location is on back of page.

I hereby certify that this document and the data contained herein was prepared by me or under my direct supervision.

Ernest J. Paul 12-21-2010
Signature Date

Registration No. 9808

Land Surveyor, Professional Engineer

County Surveyor, County Engineer

OFFICE OF THE COUNTY RECORDER

County of _____

I hereby certify that this document was filed in the County Recorder's office at _____ M. on the

_____ day of _____ A.D., 20____

County Recorder _____

BY _____ Deputy

DOCUMENT NO. _____

E1/4 CORNER, SEC. 31, T42, R23

STATEMENT OF EVIDENCE

**THE ORIGINAL CORNER WAS SET ON OCT. 21, 1851 AND 2 BEARING TREES NOTED AS:
6" BIRCH @ 16 LINKS BEARING N45°W
10" ASH @ 24 LINKS BEARING N24°E**

NO VISIBLE EVIDENCE REMAINS TODAY FOR THE CORNER OR THE BEARING TREES.

NO RECORDS OF ANY SUBSEQUENT SURVEYS COULD BE FOUND AT THE KANABEC COUNTY OFFICES.

THE PLANS FOR HWY 65 DO NOT SHOW ANY MONUMENT AT THIS LOCATION.

IN MAY 2010, E.G. RUD AND SONS, INC. RAN A SURVEY AROUND SECS. 19, 30 AND 31 AND TREATED THIS CORNER AS LOST. A MONUMENT WAS SET ON LINE BETWEEN THE NE AND SE CORNERS OF SEC. 31 AND ON LINE WITH A WELL ESTABLISHED LINE OF OCCUPATION AND FENCE RUNNING TO THE WEST. THIS WAS WITHIN 17 FEET OF A SPLIT BETWEEN THE NE AND SE CORNERS. TIES WERE TAKEN AND KANABEC COUNTY COORDINATES WERE ESTABLISHED ON THIS POSITION.