

CERTIFICATE OF LOCATION OF GOVERNMENT CORNER

East quarter Corner of Section 5, Township 42, Range 23, 4th P.M.

STATE OF MINNESOTA, County of KANABEC

At the corner location shown on the sketch:

Found a Kanabec County aluminum Monument & Rebar in good condition

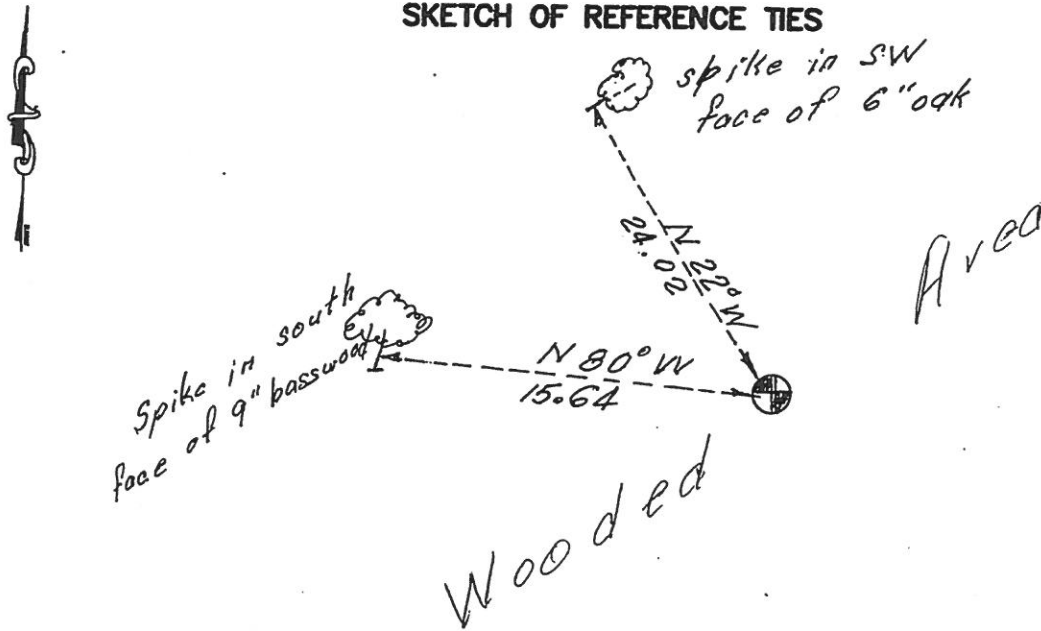
Kanabec County U.S. Survey Feet Coordinates
NAD 1983, HARN 1996 Adjustment
Obtained by RTK GPS Observation

Northing= 254068.10

Easting= 408137.46

Note: NAD 1983, HARN 1996 Adjustment coordinates are NOT compatible with NAD 1983 coordinates
Note: 1 Meter=3937/1200 U.S. Survey Feet

SKETCH OF REFERENCE TIES



Statement of evidence relative to this corner location is on back of page.

I hereby certify that this document and the data contained herein was prepared by me or under my direct supervision.

[Signature]
Signature

1-04-2018
Date

Registration No. 41578

Land Surveyor, Professional Engineer

County Surveyor, County Engineer

OFFICE OF THE COUNTY RECORDER

County of _____

I hereby certify that this document was filed in the County Recorder's office at _____ M. on the

_____ day of _____ A.D., 20__

County Recorder _____

BY _____ Deputy

DOCUMENT NO. _____

East Quarter corner section 5, Township 42, Range 23

4223112

In January 2018, E.G. Rud & sons, Inc. did a survey in the Northeast Quarter and Northwest Quarter of Section 5 and located a rebar with an aluminum cap on top. M.B. Rude in 1974 set monuments in Section 5, but did not set this one. The location of the monument fit the distance on M.B. Rude's worksheet within 0.08 hundreds of a foot. We accepted this location for the East Quarter corner of Section 5. New ties were taken and Kanabec County coordinates established on this position.