

CERTIFICATE OF LOCATION OF GOVERNMENT CORNER

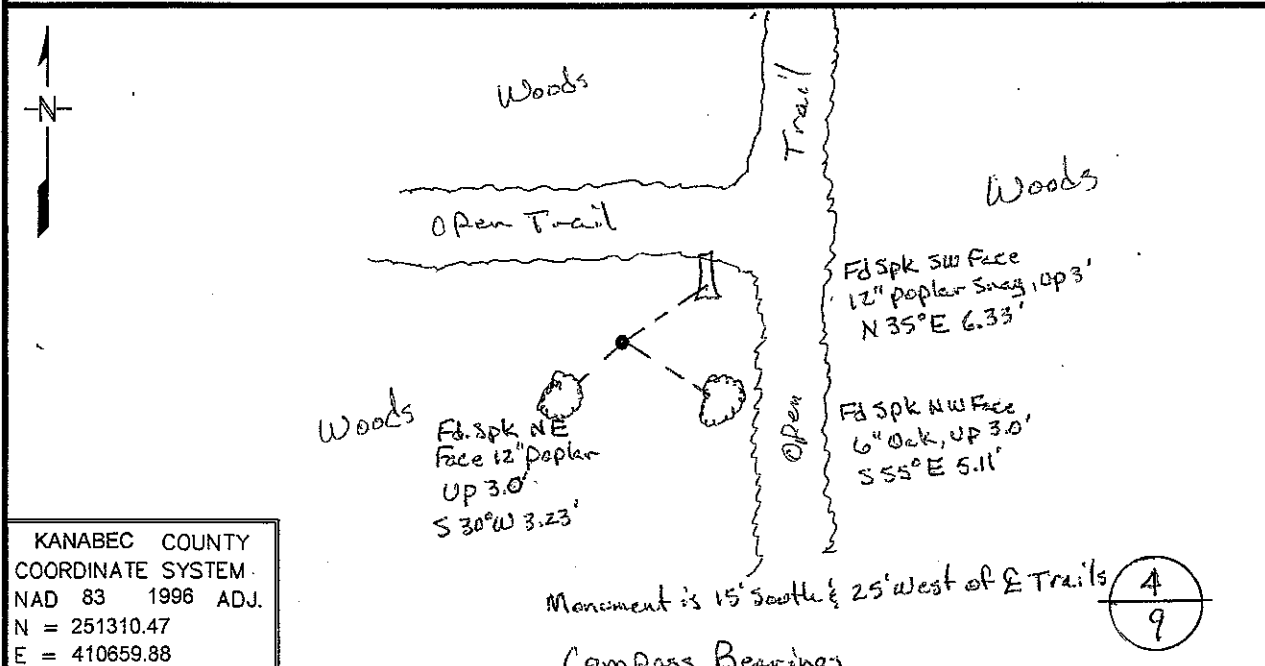
North Quarter Corner of Section 9, Township 42, Range 23
4th Principal Meridian, State of Minnesota, County of Kanabec

At the corner location shown on the sketch:

On 3/02/09 found a Kanabec County Monument, up 0.8'
DATE

left monument as found, lowered monument, removed monument (explain)

On _____ Placed a _____
DATE



KANABEC COUNTY
COORDINATE SYSTEM
NAD 83 1996 ADJ.
N = 251310.47
E = 410859.88

Statement of evidence for this corner location is on back of this page. Nov. 2009, JDW WMA00660

I certify that this document was researched and prepared by me or under my direct supervision.
SIGNATURE John N. Walbo DATE 12/2/09 License Number 16098
Title: Land Surveyor Professional Engineer County Surveyor County Engineer

North Quarter Corner Section 9, Township 42 North, Range 23 West

- 1851 U.S. General Land Office notes obtained from the Secretary of State's Office states that a post was set for corner with the following bearing trees marked:
6" Sugar N 35° E 21 links (13.86 feet)
12" Balsam S 20° W 3 links (10 feet)
- 2007 DNR Lands and Minerals contacted the following offices for survey information:
Kanabec County Auditor
Kanabec County Recorder
Kanabec County Highway Dept.
Kanabec County Surveyor Ernie Rud
Metro Land Surveying
- 1974 MB Rude ran traverse around sections 3-6, 7-10 and 15-18. He was working in section 5 and 6, but most of the section corners on the inside of this traverse were established by double proportion. He shows a distance of 5225.93 feet on the north line of section 9.
- 2007 DNR Lands and Minerals survey crew searched for corners in sections 8-10 and 15-17. The northeast corner section 8 was found as set by MB Rude. No evidence of the quarter corner was found at this time.
- 2009 DNR Lands and Minerals survey crew went to set out coordinates to the lost position of this corner and found a Kanabec County monument close to the position of this corner. The monument is 1' south and 1.68' east of the lost position per our computations. As the work done by MB Rude was good in methodology and fell within a margin of error that would have been acceptable at the time of survey, I choose to accept the monument as found.
Northeast corner section 8 bears N 87°33'47"W 2613.12'
Northeast corner section 9 bears S 87°36'24"E 2609.75'

For more information on our survey in this area please contact MN DNR, Lands and Minerals, Survey Section, 1601 Minnesota Drive, Brainerd, MN 56401