

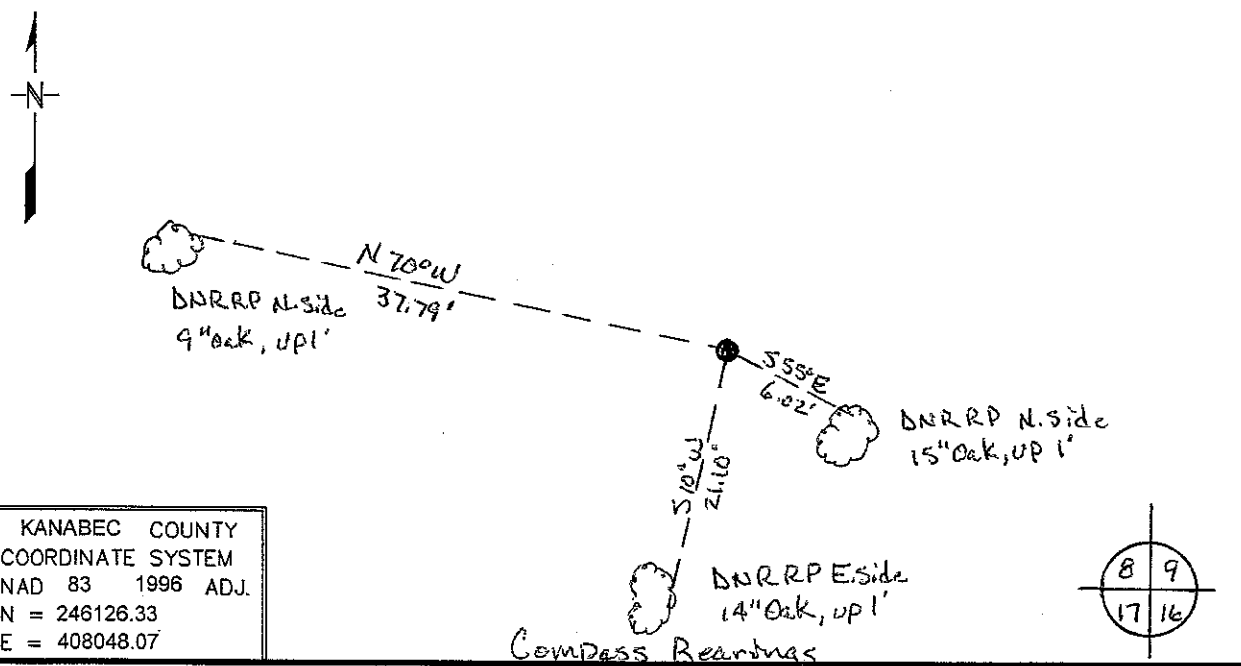
Index No. J-9

CERTIFICATE OF LOCATION OF GOVERNMENT CORNER

Northeast Corner of Section 17, Township 42, Range 23
4th Principal Meridian, State of Minnesota, County of Kanabec

At the corner location shown on the sketch:

- On _____ found a _____
DATE
- left monument as found, lowered monument, removed monument (explain)
- On 2/25/09 Placed a 3/4 inch X 24 inch rebar with LLS cap #16098 in woods
DATE



KANABEC COUNTY
 COORDINATE SYSTEM
 NAD 83 1996 ADJ.
 N = 246126.33
 E = 408048.07

Statement of evidence for this corner location is on back of this page.

Nov. 2009, JDW
WMA00660

I certify that this document was researched and prepared by me or under my direct supervision.

SIGNATURE John D Walker DATE 12/2/09 License Number 16098

Title: Land Surveyor Professional Engineer County Surveyor County Engineer

Northeast Corner Section 17, Township 42 North, Range 23 West

- 1851 U.S. General Land Office notes obtained from the Secretary of State's Office states that a post was set for corner with the following bearing trees marked:
 8" Tamarac N 22° E 11 links (7.26 feet)
 8" Tamarac S 60° W 20 links (13.20 feet)
- 2007 DNR Lands and Minerals contacted the following offices for survey information:
 Kanabec County Auditor
 Kanabec County Recorder
 Kanabec County Highway Dept.
 Kanabec County Surveyor Ernie Rud
 Metro Land Surveying
- 1914 County Auditor's office on a Ford Township atlas shows a road opening along the section line between sections 16 – 17, 8 – 9 and 4-5.
- 1974 MB Rude ran traverse around sections 3-6, 7-10 and 15-18. He was working in section 5 and 6, but most of the section corners on the inside of this traverse were established by double proportion. He shows a distance of 5296.79 feet on the east line and 5182.67 feet on the north line of section 17.
- 2007 DNR Lands and Minerals survey crew searched for corners in sections 8-10 and 15-17. The northeast corner section 18 was found along with the northeast corner section 8, northeast corner section 15 and the northeast corner section 22 as set by MB Rude. No evidence of this section corner was found. An old road grade was found running east and west between the northeast corner and north quarter corner section 15. A pile of stones was found marking the north quarter corner section 15. There is a shortage of 289' along the south lines of sections 8, 9 and 10 compared to GLO. There is a shortage of 287' between the south quarter corner section 10 and the southwest corner of section 8. The Northeast corner section 16 was discussed with Ernie Rud and it was decided to use a proportion north and south and double over the distance between the north quarter corner section 15 and the northeast corner section 15. This leaves 284.4 feet of the error in north lines of sections 16 and 17.
- 2009 DNR Lands and Minerals survey crew established the northeast corner section 17 at a double proportion position. A ¾" x 24" rebar with a plastic cap stamped "MN DNR LS16098" was set to mark the corner and ties were taken.
 Northeast corner section 8 bears N 0°00'41"E 5295.25'
 Northeast corner section 16 bears S 87°39'57"E 5137.78'
 Northeast corner section 20 bears S 01°50'32"W 5295.25'
 Northeast corner section 18 bears N 88°47'58"W 5137.78'

For more information on our survey in this area please contact MN DNR, Lands and Minerals, Survey Section, 1601 Minnesota Drive, Brainerd, MN 56401