

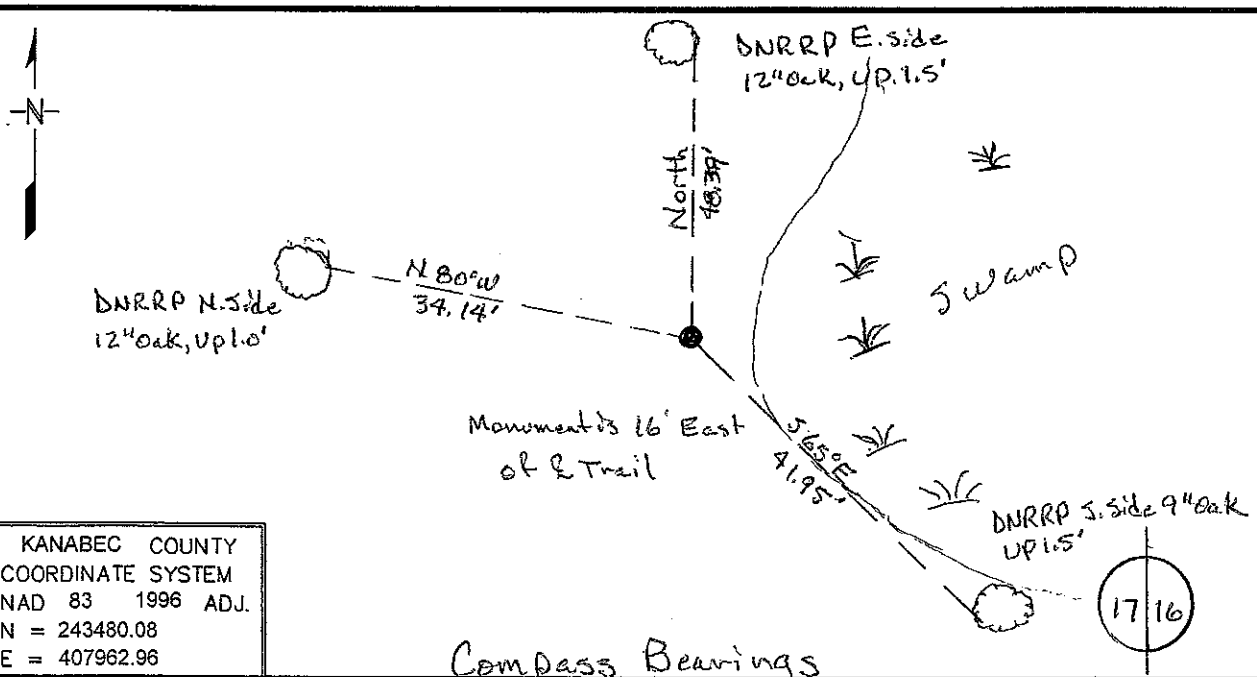
Index No. L-9

CERTIFICATE OF LOCATION OF GOVERNMENT CORNER

East Quarter Corner of Section 17, Township 42, Range 23
4th Principal Meridian, State of Minnesota, County of Kanabec

At the corner location shown on the sketch:

- On _____ found a _____
DATE _____
- left monument as found, lowered monument, removed monument (explain)
- On 2/24/09 Placed a 3/4 inch X 24 inch rebar with LLS cap #16098
DATE _____



KANABEC COUNTY
 COORDINATE SYSTEM
 NAD 83 1996 ADJ.
 N = 243480.08
 E = 407962.96

Statement of evidence for this corner location is on back of this page.

Nov. 2009, JDW
 WMA00660

I certify that this document was researched and prepared by me or under my direct supervision.

SIGNATURE Jed W. Walbo DATE 12/2/09 License Number 16098

Title: Land Surveyor Professional Engineer County Surveyor County Engineer

East Corner Section 17, Township 42 North, Range 23 West

- 1851 U.S. General Land Office notes obtained from the Secretary of State's Office states that a post was set for corner with the following bearing trees marked:
8" Sugar N 33° W 8 links (5.28 feet)
12" Balsam S 46° E 26 links (17.16 feet)
- 2007 DNR Lands and Minerals contacted the following offices for survey information:
Kanabec County Auditor
Kanabec County Recorder
Kanabec County Highway Dept.
Kanabec County Surveyor Ernie Rud
Metro Land Surveying
- 1914 County Auditor's office on a Ford Township atlas shows a road opening along the section line between sections 16 – 17, 8 – 9 and 4-5.
- 1974 MB Rude ran traverse around sections 3-6, 7-10 and 15-18. He was working in section 5 and 6, but most of the section corners on the inside of this traverse were established by double proportion. He shows a distance of 5296.79 feet on the east line of section 17.
- 2007 DNR Lands and Minerals survey crew searched for corners in sections 8-10 and 15-17. The northeast corner section 8 was found as set by MB Rude. No evidence of the quarter corner or evidence of a road between sections 16-17 and 8-9 was found.
- 2009 DNR Lands and Minerals survey crew established the northeast corner section 17 at a double proportion position and the quarter corner was established at a single proportion position of 2647.62 feet from the section corners. A ¾" x 24" rebar with a plastic cap stamped "MN DNR LS16098" was set to mark the corner and ties were taken.

For more information on our survey in this area please contact MN DNR, Lands and Minerals, Survey Section, 1601 Minnesota Drive, Brainerd, MN 56401