

CERTIFICATE OF LOCATION OF GOVERNMENT CORNER

NORTHEAST Corner of Section 20, Township 42, Range 23, 4TH P.M.

STATE OF MINNESOTA, County of KANABEC

At the corner location shown on the sketch:
SET KANABEC COUNTY MONUMENT
AND ESTABLISHED G.P.S. COORDINATES ON ITS LOCATION.

Kanabec County U.S. Survey Feet Coordinates
NAD 1983, HARN 1996 Adjustment
Obtained by RTK GPS Observation

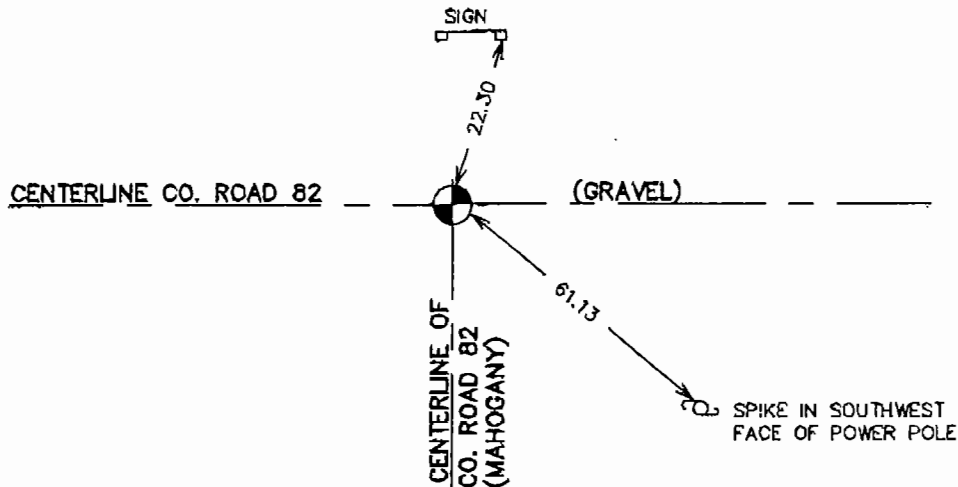
Northing= 240833.82

Easting= 407877.85

Note: NAD 1983, HARN 1996 Adjustment
coordinates are NOT compatible with
NAD 1983 coordinates

Note: 1 Meter=3937/1200 U.S. Survey Feet

SKETCH OF REFERENCE TIES



Statement of evidence relative to this corner location is on back of page.

I hereby certify that this document and the data contained herein was prepared by me or under my direct supervision.

Ernst Ellus Signature July 15, 2006 Date

Registration No. Minn No 9808

Land Surveyor, Professional Engineer

County Surveyor, County Engineer

OFFICE OF THE COUNTY RECORDER

County of Kanabec

I hereby certify that this document was filed in the County Recorder's office at 8:00 A.M. on the

20th day of July A.D., 2006

County Recorder Rhonda A. Olson

BY _____ Deputy

DOCUMENT NO. _____

NORTHEAST CORNER SECTION 20, T42, R23

STATEMENT OF EVIDENCE

THE ORIGINAL CORNER WAS SET IN OCTOBER 1851 BY U.S. DEPUTY SURVEYOR JOHN M. GLEY AND TWO BEARING TREES ESTABLISHED. EVIDENCE FOR THE CORNER OR BEARING TREES NO LONGER REMAIN. IN 1903 JOHN NELSON DID A ROAD SURVEY ALONG THE EAST AND NORTH LINE OF SECTION 20. A STONE WAS SET AT THIS LOCATION.

IN APRIL 2003 E.G. RUD RAN A SURVEY AROUND SECTION 20, 21, 28, 29, 32 AND 33 TO TIE IN EXISTING MONUMENTATION AND LINES OF OCCUPATION. THIS CORNER FALLS AT THE INTERSECTION OF A GRAVEL ROAD RUNNING EAST AND WEST AND A GRAVEL ROAD RUNNING SOUTH. IN OCTOBER 2005 KANABEC COUNTY HIGHWAY DEPARTMENT EXCAVATED AN AREA 20' X 12' X 3' DEEP. SEVERAL ROCKS WERE EXCAVATED BUT NONE WITH MARKINGS. IT APPEARED THAT THESE ROCKS WERE USED TO BRIDGE ACROSS UNSTABLE PEAT MATERIAL.

E.G. RUD ACCEPTED THE CENTERLINE CENTERLINE INTERSECTION AS THE BEST EVIDENCE FOR THE LOCATION OF THIS CORNER. THIS ALSO AGREES WITHIN 8 FEET OF JOHN NELSONS MEASUREMENT TO THE NORTHWEST CORNER OF SECTION 20. A KANABEC COUNTY MONUMENT WAS SET AND KANABEC COUNTY COORDINATES ESTABLISHED USING G.P.S. EQUIPMENT.