

# CERTIFICATE OF LOCATION OF GOVERNMENT CORNER

NORTH QUARTER Corner of Section 28, Township 42, Range 23, 4TH P.M.

STATE OF MINNESOTA, County of KANABEC

At the corner location shown on the sketch:

IN OCTOBER 2005 SET #7 REBAR  
AND ESTABLISHED G.P.S. COORDINATES ON ITS LOCATION.

Kanabec County U.S. Survey Feet Coordinates  
NAD 1983, HARN 1996 Adjustment  
Obtained by RTK GPS Observation

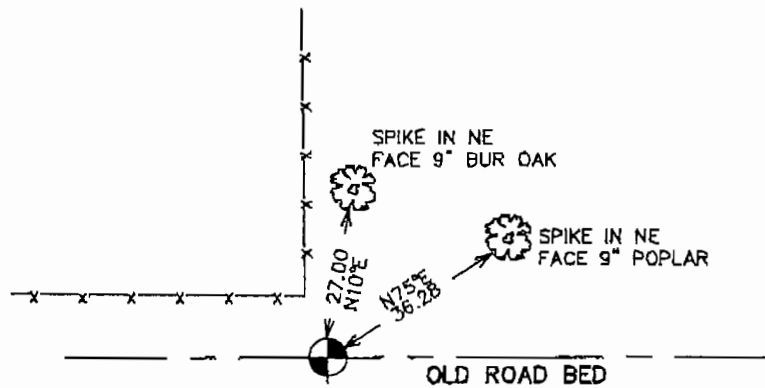
Northing= 235449.900

Easting= 410401.53

Note: NAD 1983, HARN 1996 Adjustment  
coordinates are NOT compatible with  
NAD 1983 coordinates

Note: 1 Meter=3937/1200 U.S. Survey Feet

## SKETCH OF REFERENCE TIES



Statement of evidence relative to this corner location is on back of page.

I hereby certify that this document and the data contained herein was prepared by me or under my direct supervision.

Ernest J. Reed  
Signature

July 15, 2006  
Date

### OFFICE OF THE COUNTY RECORDER

County of Kanabec

I hereby certify that this document was filed in the County Recorder's office at 8:00 A.M. on the

20<sup>th</sup> day of July A.D., 2006

County Recorder Rhonda Olson

BY \_\_\_\_\_ Deputy

DOCUMENT NO. \_\_\_\_\_

Registration No. Minn No 9828

Land Surveyor,  Professional Engineer

County Surveyor,  County Engineer

N 1/4 CORNER SECTION 28, T42, R23

**STATEMENT OF EVIDENCE**

THE ORIGINAL CORNER WAS SET BY U.S. DEPUTY SURVEYOR, JOHN M. GLEY IN OCTOBER 1851 AND TWO BEARING TREES ESTABLISHED. EVIDENCE TO THIS CORNER AND BEARING TREES NO LONGER REMAIN.

IN 2003 E.G. RUD DID A SURVEY AROUND SECTION 27, 28, 31, AND 32 TO LOCATE EXISTING MONUMENTATION AND LINES OF OCCUPATION. THIS CORNER FALLS ON THE CENTERLINE OF AN OLD EAST-WEST ROAD BED AND AN OLD FENCE RUNNING NORTH.

ON NOV. 1 2005 THE KANABEC COUNTY HIGHWAY DEPARTMENT EXCAVATED A 8 FOOT BY 8 FOOT HOLE 8 INCHES DEEP INTO NATURAL GROUND. NO EVIDENCE TO THE CORNER WAS FOUND. THEREFORE THE CENTERLINE OF THE ROAD AND FENCELINE EXTENDED WAS ACCEPTED AS THE BEST EVIDENCE FOR THE LOCATION OF THIS CORNER. A NUMBER 7 REBAR WAS SET WITH AN ALUMINUM CAP AND KANABEC COUNTY COORDINATES WERE ESTABLISHED USING G.P.S. EQUIPMENT.