

CERTIFICATE OF LOCATION OF GOVERNMENT CORNER

NORTHEAST Corner of Section 29, Township 42, Range 23, 4TH P.M.

STATE OF MINNESOTA, County of KANABEC

At the corner location shown on the sketch:
IN OCTOBER 2005 SET #7 REBAR
AND ESTABLISHED G.P.S. COORDINATES ON ITS LOCATION.

Kanabec County U.S. Survey Feet Coordinates
NAD 1983, HARN 1996 Adjustment
Obtained by RTK GPS Observation

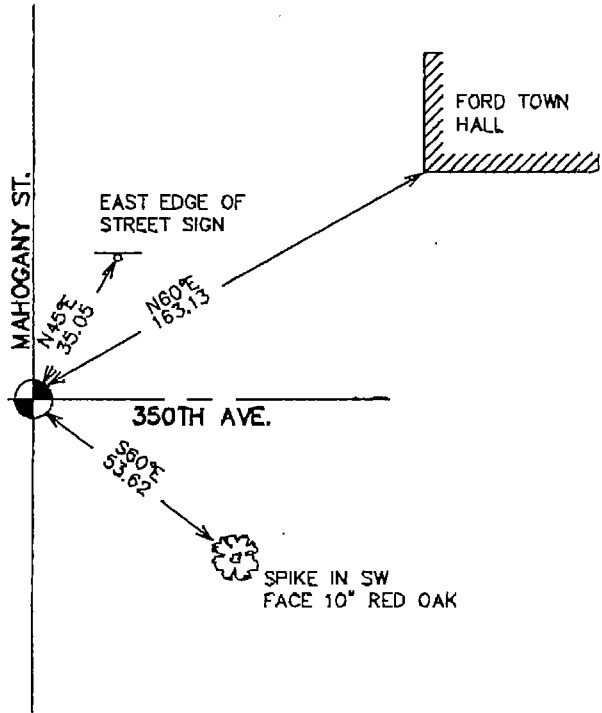
Northing= 235516.93

Easting= 407775.71

Note: NAD 1983, HARN 1996 Adjustment
coordinates are NOT compatible with
NAD 1983 coordinates

Note: 1 Meter=3937/1200 U.S. Survey Feet

SKETCH OF REFERENCE TIES



Statement of evidence relative to this corner location is on back of page.

I hereby certify that this document and the data contained herein was prepared by me or under my direct supervision.

Ernest Alund
Signature

July 15, 2006
Date

Registration No. Miss No 9808

Land Surveyor, Professional Engineer

County Surveyor, County Engineer

OFFICE OF THE COUNTY RECORDER

County of Kanabec

I hereby certify that this document was filed in the County Recorder's office at 8:00 A.M. on the

20th day of July A.D., 2006

County Recorder Rhonda A Olson

BY _____ Deputy

DOCUMENT NO. _____

NE CORNER SECTION 29, T42, R23

STATEMENT OF EVIDENCE

THE ORIGINAL CORNER WAS SET BY U.S. DEPUTY SURVEYOR, JOHN M. GLEY IN OCTOBER 1851 AND TWO BEARING TREES ESTABLISHED. EVIDENCE TO THIS CORNER AND BEARING TREES NO LONGER REMAIN.

IN 1908 JOHN VICKERY DID A ROAD SURVEY ALONG THE WEST AND NORTH SIDE OF SECTION 28. HIS SURVEY RECORDED IN PAGE 316 OF SURVEYS SHOWS JOHN SET A STONE AT THE NW AND SW CORNER OF SEC 28 AND HE FOUND A U.S. WITNESS CORNER AT THE WEST QUARTER CORNER. HE DOESN'T SHOW ANY CORNERS SET AT THE N QUARTER CORNER OR NE CORNER.

IN 1985 TERRY JOHNSON DID A SURVEY ALONG THE WEST SIDE OF SECTION 28 AND SET 1/2" RODS AT THE NW, SW AND W QUARTER CORNERS.

IN 2003 E.G. RUD DID A SURVEY AROUND SECTION 27, 28, 31, AND 32 TO LOCATE EXISTING MONUMENTATION AND LINES OF OCCUPATION. THIS CORNER FALLS ON THE CENTERLINE OF AN N-S ROAD AND CENTERLINE OF A ROAD GOING EAST.

ON NOV. 1 2005 THE KANABEC COUNTY HIGHWAY DEPARTMENT EXCAVATED A 10 FOOT BY 15 FOOT HOLE 8 INCHES INTO NATURAL GROUND. AT 6" DOWN WE FOUND TERRY JOHNSONS IRON ROD. THIS WAS TIED OUT. AT NATURAL GROUND A 6" TRIANGULAR STONE 18" IN LENGTH WAS FOUND. HOWEVER THIS WAS LAYING DOWN SO THE EXACT LOCATION COULD NOT BE DETERMINED. IT FELL ABOUT 1' NORTH OF TERRY JOHNSONS IRON. SEVERAL OTHER ROCKS WERE FOUND BUT NO MARKINGS. WE ACCEPTED TERRY JOHNSONS POSITION AS THE PERPETUATED CORNER. A #7 REBAR WITH AN ALUMINUM CAP WAS SET AND KANABEC COUNTY COORDINATES WERE ESTABLISHED USING G.P.S. EQUIPMENT.