

CERTIFICATE OF LOCATION OF GOVERNMENT CORNER

EAST QUARTER Corner of Section 29, Township 42, Range 23, 4TH P.M.

STATE OF MINNESOTA, County of KANABEC

At the corner location shown on the sketch:
IN OCTOBER 2005 SET #7 REBAR
AND ESTABLISHED G.P.S. COORDINATES ON ITS LOCATION.

Kanabec County U.S. Survey Feet Coordinates
NAD 1983, HARN 1996 Adjustment
Obtained by RTK GPS Observation

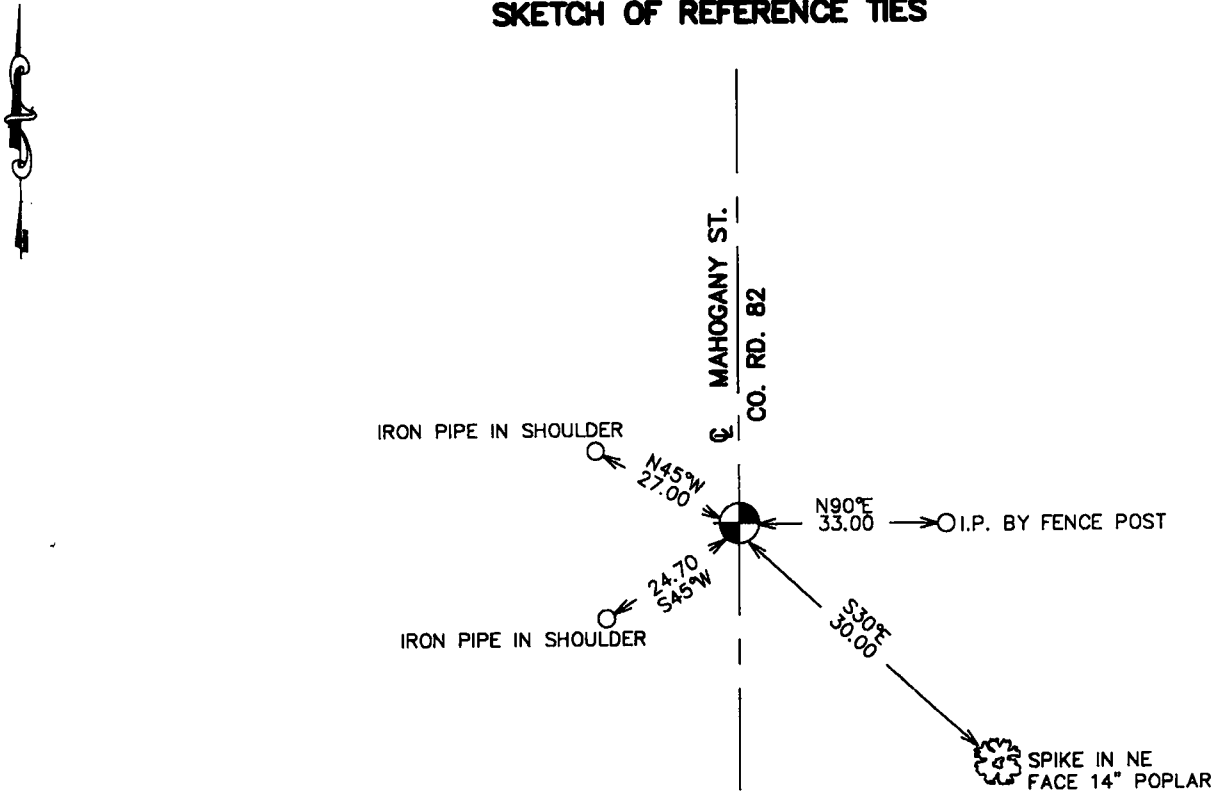
Northing= 232882.36

Easting= 407752.37

Note: NAD 1983, HARN 1996 Adjustment
coordinates are NOT compatible with
NAD 1983 coordinates

Note: 1 Meter=3937/1200 U.S. Survey Feet

SKETCH OF REFERENCE TIES



Statement of evidence relative to this corner location is on back of page.

I hereby certify that this document and the data contained herein was prepared by me or under my direct supervision.

Ernest J. Lund July 15, 2006
Signature Date

Registration No. Minn No 9808

Land Surveyor, Professional Engineer

County Surveyor, County Engineer

OFFICE OF THE COUNTY RECORDER

County of Kanabec

I hereby certify that this document was filed in the County Recorder's office at 8:00 A.M. on the

20th day of July A.D., 2006

County Recorder Rhonda Olson

BY _____ Deputy

DOCUMENT NO. _____

E 1/4 CORNER SECTION 29, T42, R23

STATEMENT OF EVIDENCE

THE ORIGINAL CORNER WAS SET BY U.S. DEPUTY SURVEYOR, JOHN M. GLEY IN OCTOBER 1851 AND TWO BEARING TREES ESTABLISHED. EVIDENCE TO THIS CORNER AND BEARING TREES NO LONGER REMAIN.

IN 1908 JOHN VICKERY DID A ROAD SURVEY ALONG THE WEST AND NORTH SIDE OF SECTION 28. HIS SURVEY RECORDED IN PAGE 316 OF SURVEYS SHOW JOHN SET A STONE AT THE NW AND SW CORNER OF SECTION 28 AND HE FOUND A U.S. WITNESS AT THE WEST QUARTER CORNER. HE DOESN'T SHOW ANY CORNERS SET AT THE N QUARTER CORNER OR NE CORNER. IN 1985 TERRY JOHNSON DID A SURVEY ALONG THE WEST SIDE OF SECTION 28 AND SET 1/2" RODS AT NW SW AND WEST QUARTER CORNERS.

IN 2003 E.G. RUD DID A SURVEY AROUND SECTION 27, 28, 31, AND 32 TO LOCATE EXISTING MONUMENTATION AND LINES OF OCCUPATION. THIS CORNER FALLS ON THE CENTERLINE OF A NORTH-SOUTH ROAD AND AN OLD FENCE RUNNING WEST.

ON NOV. 1 2005 THE KANABEC COUNTY HIGHWAY DEPARTMENT EXCAVATED A 4 FOOT BY 12 FOOT HOLE 8 INCHES INTO NATURAL GROUND. AT 6 INCHES DOWN TERRY JOHNSONS IRON WAS FOUND. THIS WAS TIED OUT. AT 3 FEET DOWN A VERTICAL WOODEN POST WAS FOUND AT NEARLY THE SAME POSITION AS TERRY JOHNSONS IRON. WE ACCEPTED THIS LOCATION AS THE PERPETUATED CORNER. A #7 REBAR WAS SET, TIES TAKEN AND KANABEC COUNTY COORDINATES ESTABLISHED USING G.P.S. EQUIPMENT.