

# CERTIFICATE OF LOCATION OF GOVERNMENT CORNER

NORTHEAST Corner of Section 32 , Township 42 , Range 23 , 4TH P.M.

STATE OF MINNESOTA, County of KANABEC

At the corner location shown on the sketch:  
IN OCTOBER 2005 SET #7 REBAR  
AND ESTABLISHED G.P.S. COORDINATES ON ITS LOCATION.

Kanabec County U.S. Survey Feet Coordinates  
NAD 1983, HARN 1996 Adjustment  
Obtained by RTK GPS Observation

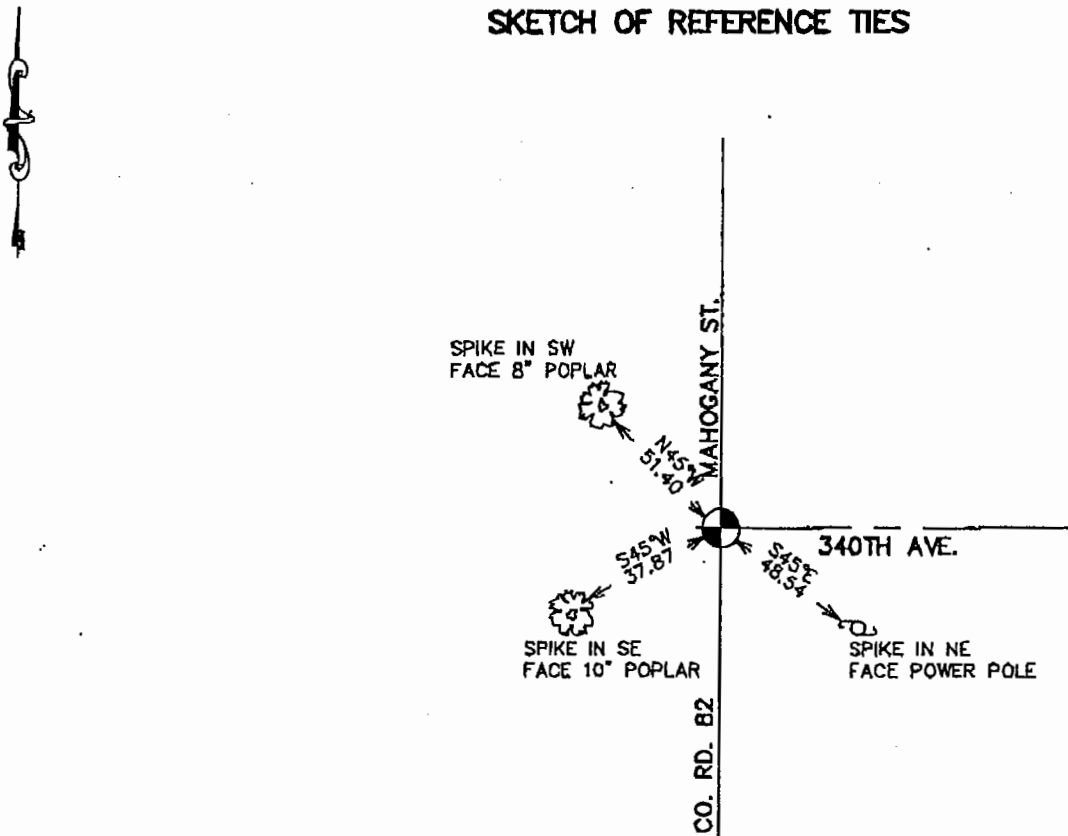
Northing= 230236.36

Easting= 407725.07

Note: NAD 1983, HARN 1996 Adjustment  
coordinates are NOT compatible with  
NAD 1983 coordinates

Note: 1 Meter=3937/1200 U.S. Survey Feet

## SKETCH OF REFERENCE TIES



Statement of evidence relative to this corner location is on back of page.

I hereby certify that this document and the data contained herein was prepared by me or under my direct supervision.

Ernest Blud  
Signature

July 15 2006  
Date

### OFFICE OF THE COUNTY RECORDER

County of Kanabec

I hereby certify that this document was filed in the County Recorder's office at 8:00 A.M. on the

20<sup>th</sup> day of July A.D., 2006

County Recorder Rhonda A Olson

BY \_\_\_\_\_ Deputy

DOCUMENT NO. \_\_\_\_\_

Registration No. Minn No 9808

Land Surveyor,  Professional Engineer

County Surveyor,  County Engineer

## NE CORNER SECTION 33, T42, R23

**STATEMENT OF EVIDENCE**

THE ORIGINAL CORNER WAS SET BY U.S. DEPUTY SURVEYOR, JOHN M. GLEY IN OCTOBER 1851 AND TWO BEARING TREES ESTABLISHED. EVIDENCE TO THIS CORNER AND BEARING TREES NO LONGER REMAIN.

IN 1908 JOHN VICKERY DID A ROAD SURVEY ALONG THE WEST AND NORTH SIDE OF SECTION 28. HIS SURVEY RECORDED IN PAGE 316 OF SURVEYS SHOWS JOHN SET A STONE AT THE NW AND SW CORNER OF SEC 28 AND HE FOUND A U.S. WITNESS CORNER AT THE WEST QUARTER CORNER. HE DOESN'T SHOW ANY CORNERS SET AT THE N QUARTER CORNER OR NE CORNER.

IN 1985 TERRY JOHNSON DID A SURVEY ALONG THE WEST SIDE OF SECTION 28 AND SET 1/2" RODS AT THE NW, SW AND W QUARTER CORNERS.

IN 2003 E.G. RUD DID A SURVEY AROUND SECTION 27, 28, 31, AND 32 TO LOCATE EXISTING MONUMENTATION AND LINES OF OCCUPATION. THIS CORNER FALLS ON THE CENTERLINE OF AN N-S ROAD AND CENTERLINE OF A ROAD GOING EAST.

ON NOV. 1 2005 THE KANABEC COUNTY HIGHWAY DEPARTMENT EXCAVATED A 10 FOOT BY 15 FOOT HOLE 12 INCHES INTO NATURAL GROUND. AT SURFACE A 60P SPIKE WAS FOUND. AT 12" DOWN WE FOUND A 1/2" REBAR WITH TERRY JOHNSONS' NUMBERED CAP. THIS WAS 0.4' NE OF 60P SPIKE. NOTHING ELSE WAS FOUND IN THE EXCAVATION SO TERRY JOHNSONS REBAR WAS ACCEPTED AS THE PERPETUATED CORNER. A #7 REBAR WITH AN ALUMINUM CAP WAS SET AND KANABEC COUNTY COORDINATES WERE ESTABLISHED USING G.P.S. EQUIPMENT.