

CERTIFICATE OF LOCATION OF GOVERNMENT CORNER

EAST QUARTER Corner of Section 32, Township 42, Range 23, 4TH P.M.

STATE OF MINNESOTA, County of KANABEC

At the corner localibn shown on the sketch:

IN 2006 SET A KANABEC COUNTY MONUMENT
AND ESTABLISHED KANABEC COUNTY COORDINATES ON ITS LOCATION.

Kanabec County U.S. Survey Feet Coordinates
NAD 1983, HARN 1996 Adjustment
Obtained by RTK GPS Observation

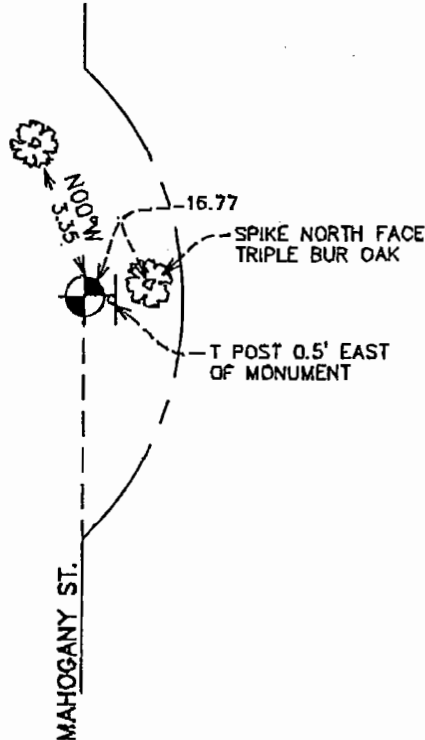
Northing= 227604.46

Easting= 407694.10

Note: NAD 1983, HARN 1996 Adjustment
coordinates are NOT compatible with
NAD 1983 coordinates

Note: 1 Meter=3937/1200 U.S. Survey Feet

SKETCH OF REFERENCE TIES



Statement of evidence relative to this corner location is on back of page.

I hereby certify that this document and the data contained herein was prepared by me or under my direct supervision.

Ernest J. Rud
Signature

July 15, 2006
Date

OFFICE OF THE COUNTY RECORDER

County of Kanabec

I hereby certify that this document was filed in the County Recorder's office at 8:00 A.M. on the

20th day of July A.D., 2006

County Recorder Rhonda A. Olson

BY _____ Deputy

DOCUMENT NO. _____

Registration No. Miss No 9808

Land Surveyor, Professional Engineer

County Surveyor, County Engineer

E 1/4 CORNER SEC. 32, T 42, R 23

STATEMENT OF EVIDENCE

THE ORIGINAL CORNER WAS SET BY U.S. DEPUTY SURVEYOR JOHN M. GLAY IN OCTOBER 1851. THE ORIGINAL CORNER AND BEARING TREES NO LONGER REMAIN.

IN 1908 JOHN VICKERRY RAN A ROAD SURVEY STARTING AT THIS CORNER AND RUNNING NORTH.

IN DECEMBER 2005 E.G. RUD RAN A SURVEY AROUND SECTION 32 TO LOCATE EXISTING MONUMENTATION AND LINE OF OCCUPATION. THIS CORNER FALLS ON THE NORTHERLY EXTENSION OF A GRAVEL ROAD AND AN OLD B.W. FENCE GOING WEST. WE COULD NOT FIND ANY EVIDENCE FOR THE CORNER AND THE LANDOWNER TO THE EAST (VIC STENBERG) TESTIFIED THAT THE GRANITE ROCKS INPLACE WAS SET BY THE PREVIOUS LANDOWNER TO THE WEST. WE SET THIS CORNER AT SINGLE PROPORTIONATE MEASUREMENT AND ON LINE BETWEEN THE NORTHEAST AND SOUTHEAST CORNERS OF SECTION 32. A KANABEC COUNTY MONUMENT WAS SET, TIES TAKEN AND KANABEC COUNTY COORDINATES ESTABLISHED ON THIS POSITION.