

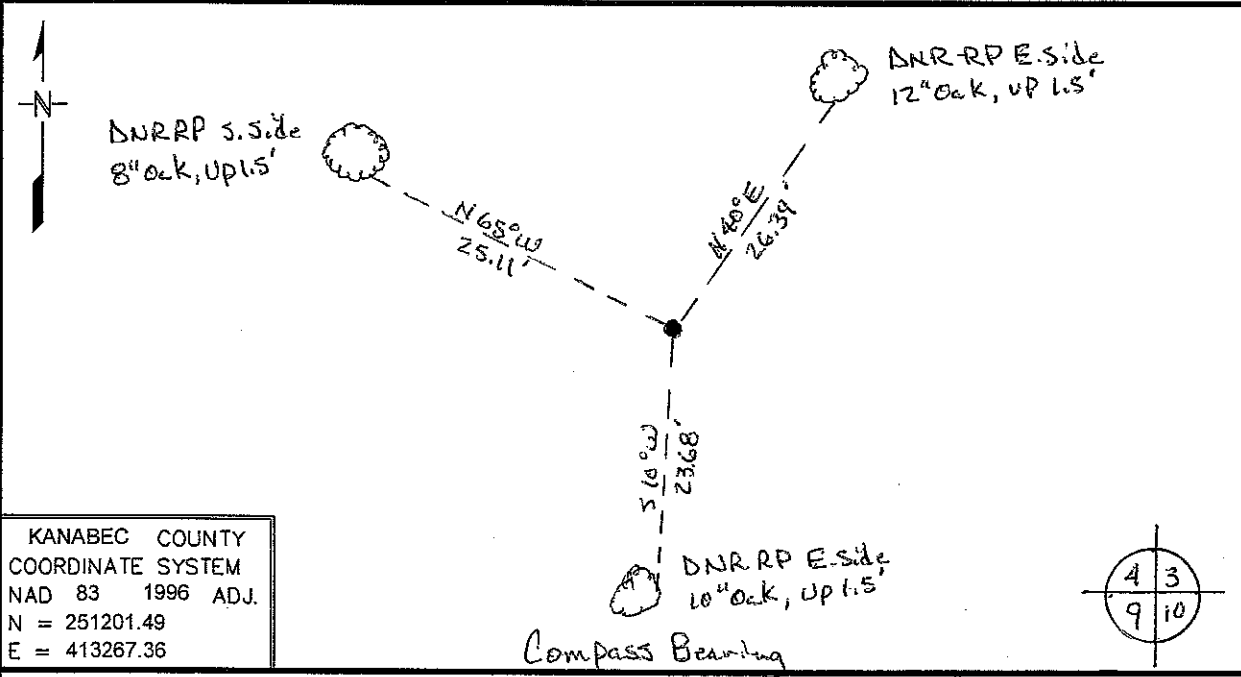
Index No. E - 13

# CERTIFICATE OF LOCATION OF GOVERNMENT CORNER

Northeast Corner of Section 9, Township 42, Range 23  
4th Principal Meridian, State of Minnesota, County of Kanabec

At the corner location shown on the sketch:

- On \_\_\_\_\_ found a \_\_\_\_\_  
DATE
- left monument as found,  lowered monument,  removed monument (explain)
- On 2/24/09 Placed a 3/4 inch X 24 inch rebar with LLS cap #16098 in woods  
DATE



KANABEC COUNTY  
 COORDINATE SYSTEM  
 NAD 83 1996 ADJ.  
 N = 251201.49  
 E = 413267.36

Statement of evidence for this corner location is on back of this page.

Nov. 2009, JDW  
WMA00660

I certify that this document was researched and prepared by me or under my direct supervision.

SIGNATURE John D. Walker DATE 12/4/09 License Number 16098

Title:  Land Surveyor  Professional Engineer  County Surveyor  County Engineer

**Northeast Corner Section 9, Township 42 North, Range 23 West**

- 1851 U.S. General Land Office notes obtained from the Secretary of State's Office states that a post was set for corner with the following bearing trees marked:  
 24" Pine N 13° W 15 links (9.9 feet)  
 18" Pine S 60° E 27 links (17.82 feet)
- 2007 DNR Lands and Minerals contacted the following offices for survey information:  
 Kanabec County Auditor  
 Kanabec County Recorder  
 Kanabec County Highway Dept.  
 Kanabec County Surveyor Ernie Rud  
 Metro Land Surveying
- 1922 Geo. H. Jenks laid out a new road along the south, west and north lines of section 10. He shows distances of 5280' on the north and west lines of the section. In the county highway certificate book he shows he found this corner and set a stone marked + and took ties to two pine snags.
- 1974 MB Rude ran traverse around sections 3-6, 7-10 and 15-18. He was working in section 5 and 6, but most of the section corners on the inside of this traverse were established by double proportion. He shows distances of 5284.37 feet on the west line and 5249.11 feet on the north line of section 10. On his worksheet is the following note: "LINE WAS RUN BY COMPASS AROUND SEC 3 AND E ½ SEC 4 BY MEL LARSON OF SANDSTONE AND NEW FENCES WERE BUILT. HE IS NOT A REGISTERED SURVEYOR & WHEN TALKING TO HIM HE DID NOT USE THE ORIGINAL SURVEY PLAT OR NOTES IN RUNNING HIS LINES. I HAVE NOT USED THE NEW FENCE LINES IN SECTION 3 BUT HAVE USED GOVT PROPTIONAL MEASUREMENTS TO SET CORNERS. (Signed)M.B.RUDE 2-25-74"
- 2007 DNR Lands and Minerals survey crew searched for corners in sections 8-10 and 15-17. The northeast corner section 8 was found along with the northeast corner section 4, the northeast corner section 10 and the northeast corner section 21 as set by MB Rude. No evidence of this section corner was found. A fence corner with fences running east – west and south was found about 150' south and 27' east of the lost position of this corner.
- 2009 In Feb., DNR Lands and Minerals survey crew established the northeast corner section 9 at a double proportion position. A ¾" x 24" rebar with a plastic cap stamped "MN DNR LS16098" was set to mark the corner and ties were taken.  
 Northeast corner section 4 bears N 02°21'21"E 5384.10'  
 Northeast corner section 10 bears S 88°23'09"E 5248.46'  
 Northeast corner section 16 bears S 00°55'47"W 5285.10'  
 Northeast corner section 8 bears N 87°35'06"W 5222.87'
- 2009 In April, DNR Lands and Minerals survey crew went back to the area of this corner with a rake and leaf blower to search a large area again for the stone with + set by Jenks. They uncovered numerous unmarked stones, but none with a +.

For more information on our survey in this area please contact MN DNR, Lands and Minerals, Survey Section, 1601 Minnesota Drive, Brainerd, MN 56401