

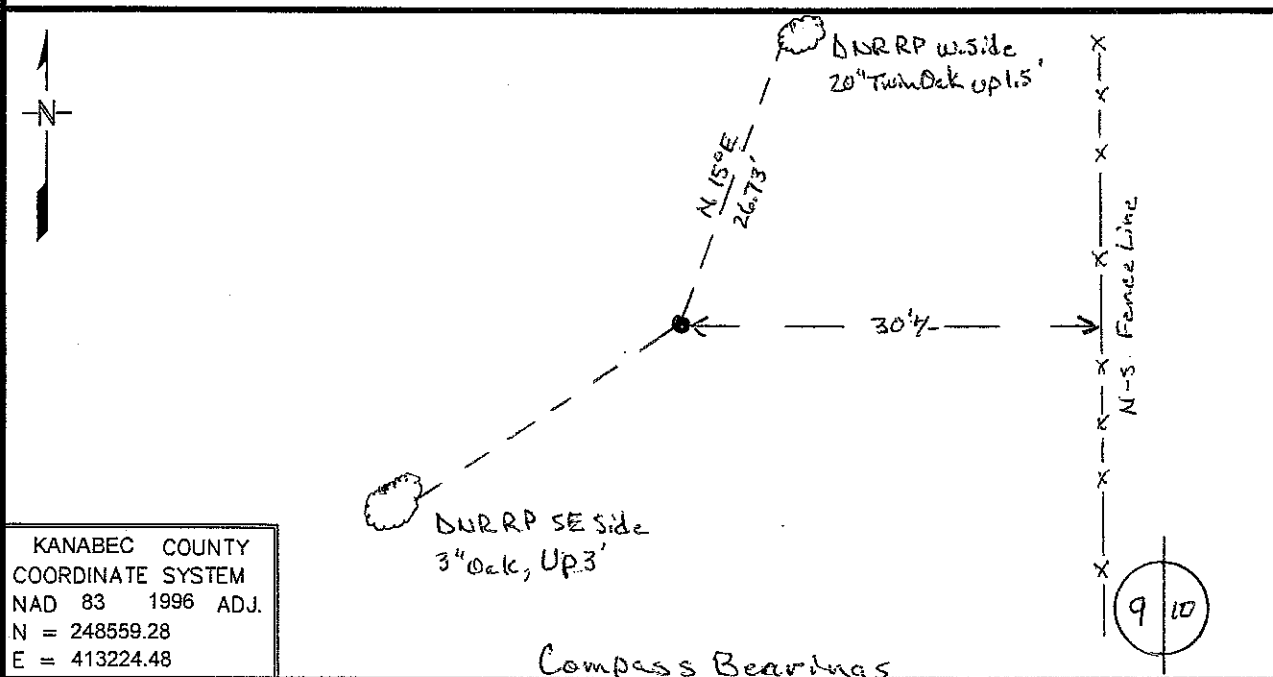
Index No. G - 13

CERTIFICATE OF LOCATION OF GOVERNMENT CORNER

East Quarter Corner of Section 9, Township 42, Range 23
4th Principal Meridian, State of Minnesota, County of Kanabec

At the corner location shown on the sketch:

- On _____ found a _____
DATE
- left monument as found, lowered monument, removed monument (explain)
- On 2/24/09 Placed a 3/4 inch X 24 inch rebar with LLS cap #16098 in woods
DATE



KANABEC COUNTY
 COORDINATE SYSTEM
 NAD 83 1996 ADJ.
 N = 248559.28
 E = 413224.48

Statement of evidence for this corner location is on back of this page.

Nov. 2009, JDW
 WMA00660

I certify that this document was researched and prepared by me or under my direct supervision.

SIGNATURE [Signature] DATE 12/2/09 License Number 16098

Title: Land Surveyor Professional Engineer County Surveyor County Engineer

East Quarter Corner Section 9, Township 42 North, Range 23 West

- 1851 U.S. General Land Office notes obtained from the Secretary of State's Office states that a post was set for corner with the following bearing trees marked:
 7" Balsam N 10° W 18 links (11.88 feet)
 10" Balsam S 15° E 13 links (8.58 feet)
- 2007 DNR Lands and Minerals contacted the following offices for survey information:
 Kanabec County Auditor
 Kanabec County Recorder
 Kanabec County Highway Dept.
 Kanabec County Surveyor Ernie Rud
 Metro Land Surveying
- 1922 Geo. H. Jenks laid out a new road along the south, west and north lines of section 10. He shows distances of 5280' on the west line and 5313' on the south line of the section.
- 1974 MB Rude ran traverse around sections 3-6, 7-10 and 15-18. He was working in section 5 and 6, but most of the section corners on the inside of this traverse were established by double proportion. He shows distances of 5284.37 feet on the west line and 5216.06 feet on the south line of section 10. On his worksheet is the following note: "LINE WAS RUN BY COMPASS AROUND SEC 3 AND E ½ SEC 4 BY MEL LARSON OF SANDSTONE AND NEW FENCES WERE BUILT. HE IS NOT A REGISTERED SURVEYOR & WHEN TALKING TO HIM HE DID NOT USE THE ORIGINAL SURVEY PLAT OR NOTES IN RUNNING HIS LINES. I HAVE NOT USED THE NEW FENCE LINES IN SECTION 3 BUT HAVE USED GOVT PROPORTIONAL MEASUREMENTS TO SET CORNERS. (Signed)M.B.RUDE 2-25-74"
- 2007 DNR Lands and Minerals survey crew searched for corners in sections 8-10 and 15-17. At this corner no evidence of the corner was found. A fence running north and south in the area was located. This fence was probably put in from the Mel Larson work as stated on MB Rude's worksheet.
- 2009 In Feb., DNR Lands and Minerals survey crew set a ¾" x 24" rebar with a plastic cap stamped "MN DNR LS16098" in the lost position to mark the corner and ties were taken.
 Northeast corner section 9 bears N 00°55'47"W 2642.55'
 Northeast corner section 16 bears S 00°55'47"E 2642.55'

For more information on our survey in this area please contact MN DNR, Lands and Minerals, Survey Section, 1601 Minnesota Drive, Brainerd, MN 56401