

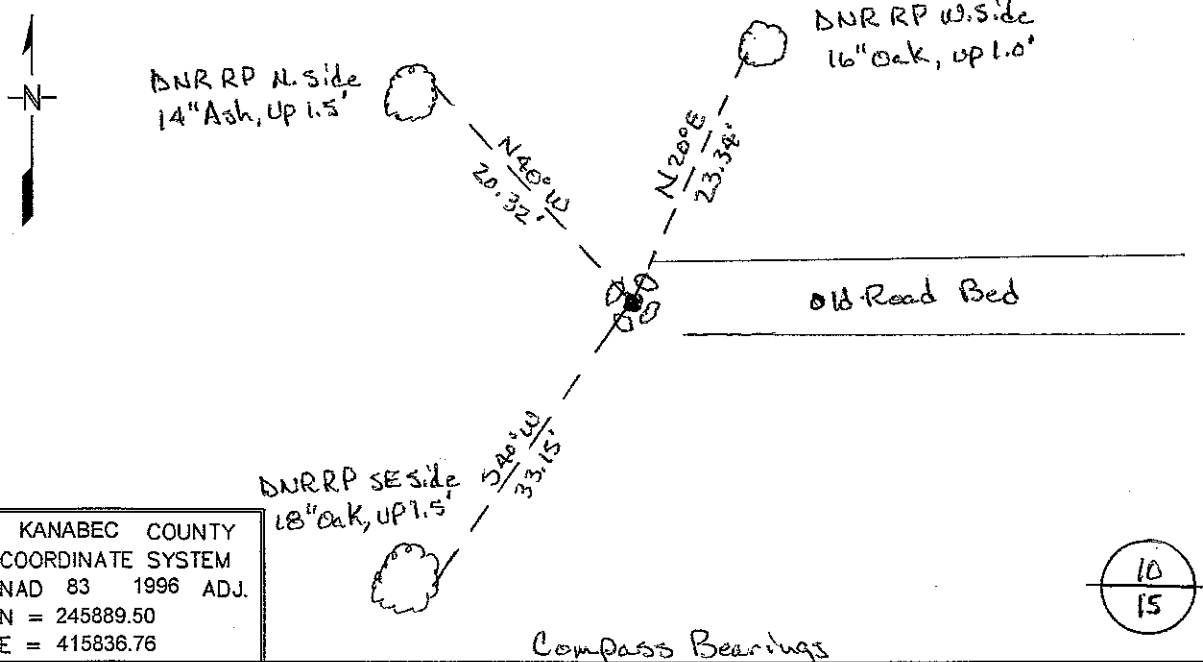
Index No. J - 15

# CERTIFICATE OF LOCATION OF GOVERNMENT CORNER

North Quarter Corner of Section 15, Township 42, Range 23  
4th Principal Meridian, State of Minnesota, County of Kanabec

At the corner location shown on the sketch:

- On 2/15/07 found a pile of 4 rocks in a circle, in line with an old road grade east  
DATE
- left monument as found,  lowered monument,  removed monument (explain)
- On 2/23/09 Placed a 3/4 inch X 24 inch rebar with LLS cap #16098 in center  
DATE  
of rocks



KANABEC COUNTY  
 COORDINATE SYSTEM  
 NAD 83 1996 ADJ.  
 N = 245889.50  
 E = 415836.76

Statement of evidence for this corner location is on back of this page.

Nov. 2009, JDW  
 WMA00680

I certify that this document was researched and prepared by me or under my direct supervision.

SIGNATURE Johnd D Walker DATE 12/2/09 License Number 16098

Title:  Land Surveyor  Professional Engineer  County Surveyor  County Engineer

**North Quarter Corner Section 15, Township 42 North, Range 23 West**

- 1851 U.S. General Land Office notes obtained from the Secretary of State's Office states that a post was set for corner with the following bearing trees marked:  
 12" Pine N 65° W 10 links (6.6 feet)  
 18" Pine S 42° E 21 links (13.86 feet)
- 2007 DNR Lands and Minerals contacted the following offices for survey information:  
 Kanabec County Auditor  
 Kanabec County Recorder  
 Kanabec County Highway Dept.  
 Kanabec County Surveyor Ernie Rud  
 Metro Land Surveying
- 1922 Geo. H. Jenks laid out a new road along the south, west and north lines of section 10. He shows distances of 5280' on the west line and 5313' on the south line of the section.
- 1974 MB Rude ran traverse around sections 3-6, 7-10 and 15-18. He was working in section 5 and 6, but most of the section corners on the inside of this traverse were established by double proportion. He shows distances of 5284.37 feet on the west line and 5216.06 feet on the south line of section 10. On his worksheet is the following note: "LINE WAS RUN BY COMPASS AROUND SEC 3 AND E ½ SEC 4 BY MEL LARSON OF SANDSTONE AND NEW FENCES WERE BUILT. HE IS NOT A REGISTERED SURVEYOR & WHEN TALKING TO HIM HE DID NOT USE THE ORIGINAL SURVEY PLAT OR NOTES IN RUNNING HIS LINES. I HAVE NOT USED THE NEW FENCE LINES IN SECTION 3 BUT HAVE USED GOVT PROPORTIONAL MEASUREMENTS TO SET CORNERS. (Signed)M.B.RUDE 2-25-74"
- 2007 DNR Lands and Minerals survey crew searched for corners in sections 8-10 and 15-17. An old road grade was found running east and west between the northeast corner and north quarter corner section 15. A pile of four stones was found marking this corner at the westerly end of the old road grade. This corner was discussed with Ernie Rud and it was decided to use the pile of stones for the corner.
- 2009 In Feb., DNR Lands and Minerals survey crew set a ¾" x 24" rebar with a plastic cap stamped "MN DNR LS16098" in the center of the stone pile to mark the corner and ties were taken. The stone pile is 65 feet north of a straight line between the section corners.  
 Northeast corner section 16 bears N 89°24'18"W 2655.30'  
 Northeast corner section 15 bears S 86°35'46"E 2655.30'

For more information on our survey in this area please contact MN DNR, Lands and Minerals, Survey Section, 1601 Minnesota Drive, Brainerd, MN 56401