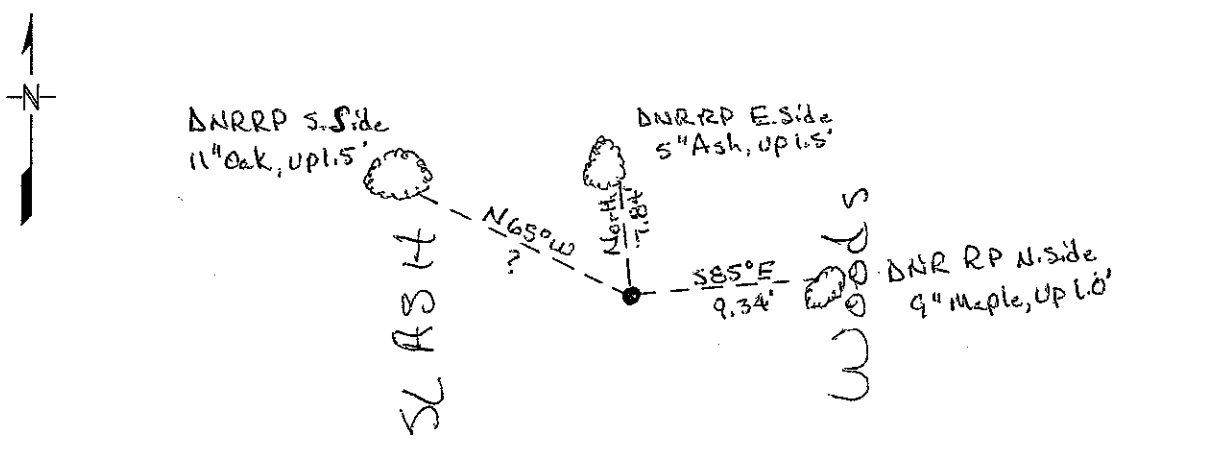


# CERTIFICATE OF LOCATION OF GOVERNMENT CORNER

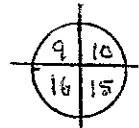
Northeast Corner of Section 16, Township 42, Range 23  
4th Principal Meridian, State of Minnesota, County of Kanabec

At the corner location shown on the sketch:

- On \_\_\_\_\_ found a \_\_\_\_\_  
DATE
- left monument as found,  lowered monument,  removed monument (explain)
- On 2/23/09 Placed a 3/4 inch X 24 inch rebar with LLS cap #16098  
DATE



KANABEC COUNTY  
 COORDINATE SYSTEM  
 NAD 83 1996 ADJ.  
 N = 245917.08  
 E = 413181.60



Compass Bearings

Statement of evidence for this corner location is on back of this page.

Nov. 2009, JDW  
WMA00660

I certify that this document was researched and prepared by me or under my direct supervision.

SIGNATURE [Signature] DATE 12/2/09 License Number 16098

Title:  Land Surveyor  Professional Engineer  County Surveyor  County Engineer

**Northeast Corner Section 16, Township 42 North, Range 23 West**

- 1851 U.S. General Land Office notes obtained from the Secretary of State's Office states that a post was set for corner with the following bearing trees marked:  
 12" Pine N 80° W 85 links (56.10 feet)  
 20" Pine S 80° W 20 links (13.2 feet)
- 2007 DNR Lands and Minerals contacted the following offices for survey information:  
 Kanabec County Auditor  
 Kanabec County Recorder  
 Kanabec County Highway Dept.  
 Kanabec County Surveyor Ernie Rud  
 Metro Land Surveying
- 1922 Geo. H. Jenks laid out a new road along the south, west and north lines of section 10. He shows distances of 5280' on the west line and 5313' on the south line of the section. In the county highway certificate book he shows he found this corner and set a stone marked + and took a tie to poplar tree.
- 1974 MB Rude ran traverse around sections 3-6, 7-10 and 15-18. He was working in section 5 and 6, but most of the section corners on the inside of this traverse were established by double proportion. He shows distances of 5284.37 feet on the west line and 5216.06 feet on the south line of section 10. On his worksheet is the following note: "LINE WAS RUN BY COMPASS AROUND SEC 3 AND E ½ SEC 4 BY MEL LARSON OF SANDSTONE AND NEW FENCES WERE BUILT. HE IS NOT A REGISTERED SURVEYOR & WHEN TALKING TO HIM HE DID NOT USE THE ORIGINAL SURVEY PLAT OR NOTES IN RUNNING HIS LINES. I HAVE NOT USED THE NEW FENCE LINES IN SECTION 3 BUT HAVE USED GOVT PROPORTIONAL MEASUREMENTS TO SET CORNERS. (Signed)M.B.RUDE 2-25-74"
- 2007 DNR Lands and Minerals survey crew searched for corners in sections 8-10 and 15-17. The northeast corner section 18 was found along with the northeast corner section 4, northeast corner section 15 and the northeast corner section 21 as set by MB Rude. No evidence of this section corner was found. An old road grade was found running east and west between the northeast corner and north quarter corner section 15. A pile of stones was found marking the north quarter corner section 15. There is a shortage of 289' along the south lines of sections 8, 9 and 10 compared to GLO. There is a shortage of 287' between the south quarter corner section 10 and the southwest corner of section 8. This corner was discussed with Ernie Rud and it was decided to use a proportion north and south and double over the distance between the north quarter corner section 15 and the northeast corner section 15 if we can't find the stone set by Jenks.
- 2009 In Feb., DNR Lands and Minerals survey crew established the northeast corner section 16 by the above described method. A ¾" x 24" rebar with a plastic cap stamped "MN DNR LS16098" was set to mark the corner and ties were taken.  
 Northeast corner section 9 bears N 00°55'47"E 5285.10'  
 North Quarter corner section 15 bears S 89°24'18"E 2655.30'  
 Northeast corner section 21 bears S 00°14'43"W 5285.10'  
 Northeast corner section 17 bears N 87°39'57"W 5137.78'
- 2009 In April, DNR Lands and Minerals survey crew went back to the area of this corner with a rake and leaf blower to search one more time over a large area for the stone with + set by Jenks. They uncovered numerous unmarked stones, but none with a +.

For more information on our survey in this area please contact MN DNR, Lands and Minerals, Survey Section, 1601 Minnesota Drive, Brainerd, MN 56401