

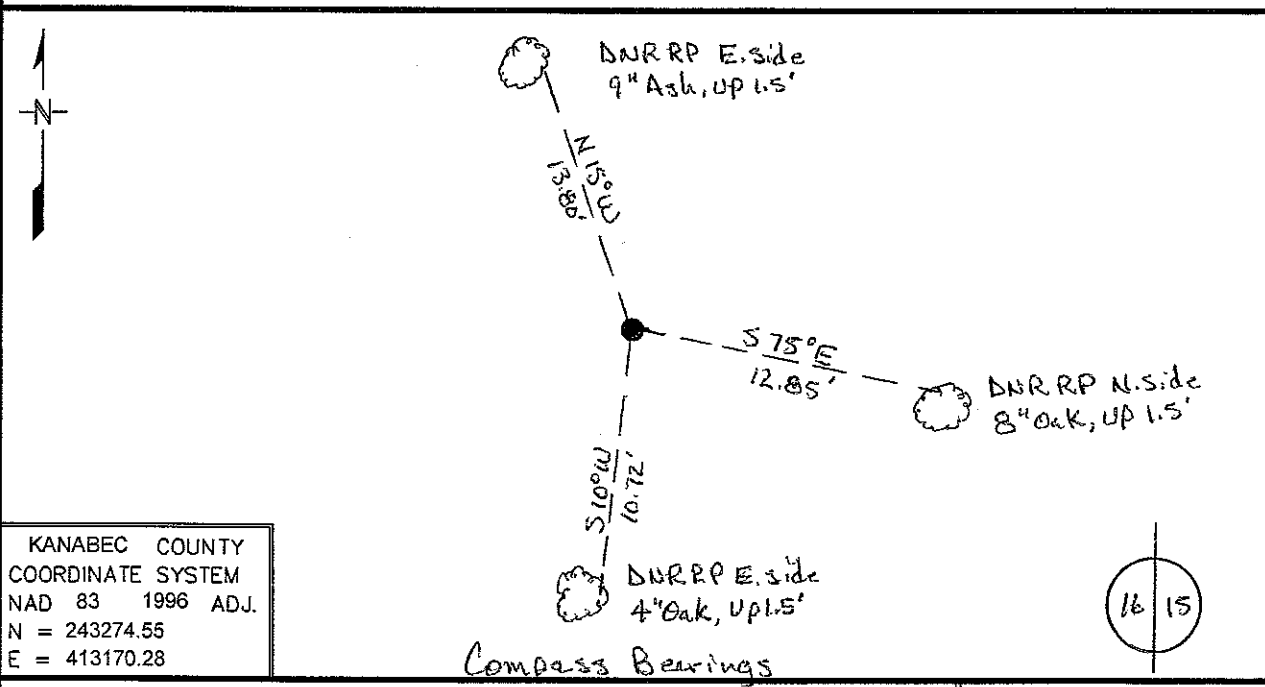
Index No. L-13

# CERTIFICATE OF LOCATION OF GOVERNMENT CORNER

East Quarter Corner of Section 16, Township 42, Range 23  
4th Principal Meridian, State of Minnesota, County of Kanabec

At the corner location shown on the sketch:

- On \_\_\_\_\_ found a \_\_\_\_\_  
DATE
- left monument as found,  lowered monument,  removed monument (explain)
- On 2/23/09 Placed a 3/4 inch X 24 inch rebar with LLS cap #16098 in woods  
DATE



KANABEC COUNTY  
COORDINATE SYSTEM  
NAD 83 1996 ADJ.  
N = 243274.55  
E = 413170.28

Statement of evidence for this corner location is on back of this page.

Nov. 2009, JDW  
WMA00680

I certify that this document was researched and prepared by me or under my direct supervision.

SIGNATURE John D. Walker DATE 12/2/09 License Number 16098

Title:  Land Surveyor  Professional Engineer  County Surveyor  County Engineer

**East Quarter Corner Section 16, Township 42 North, Range 23 West**

- 1851 U.S. General Land Office notes obtained from the Secretary of State's Office states that a post was set for corner with the following bearing trees marked:  
8" Balsam N 60° W 26 links (17.16 feet)  
7" Birch N 80° E 17 links (11.22 feet)
- 2007 DNR Lands and Minerals contacted the following offices for survey information:  
Kanabec County Auditor  
Kanabec County Recorder  
Kanabec County Highway Dept.  
Kanabec County Surveyor Ernie Rud  
Metro Land Surveying
- 1974 MB Rude ran traverse around sections 3-6, 7-10 and 15-18. He was working in section 5 and 6, but most of the section corners on the inside of this traverse were established by double proportion. He shows a distance of 5285.0 feet on the east line of section 16.
- 2007 DNR Lands and Minerals survey crew searched for corners in sections 8-10 and 15-17. No evidence was found at this corner.
- 2009 In Feb., DNR Lands and Minerals survey crew set a ¾" x 24" rebar with a plastic cap stamped "MN DNR LS16098" in the lost position to mark the corner and ties were taken.  
Northeast corner section 16 bears N 00°14'43"E 2642.55'  
Northeast corner section 21 bears S 00°14'43"W 2642.55'

For more information on our survey in this area please contact MN DNR, Lands and Minerals, Survey Section, 1601 Minnesota Drive, Brainerd, MN 56401