

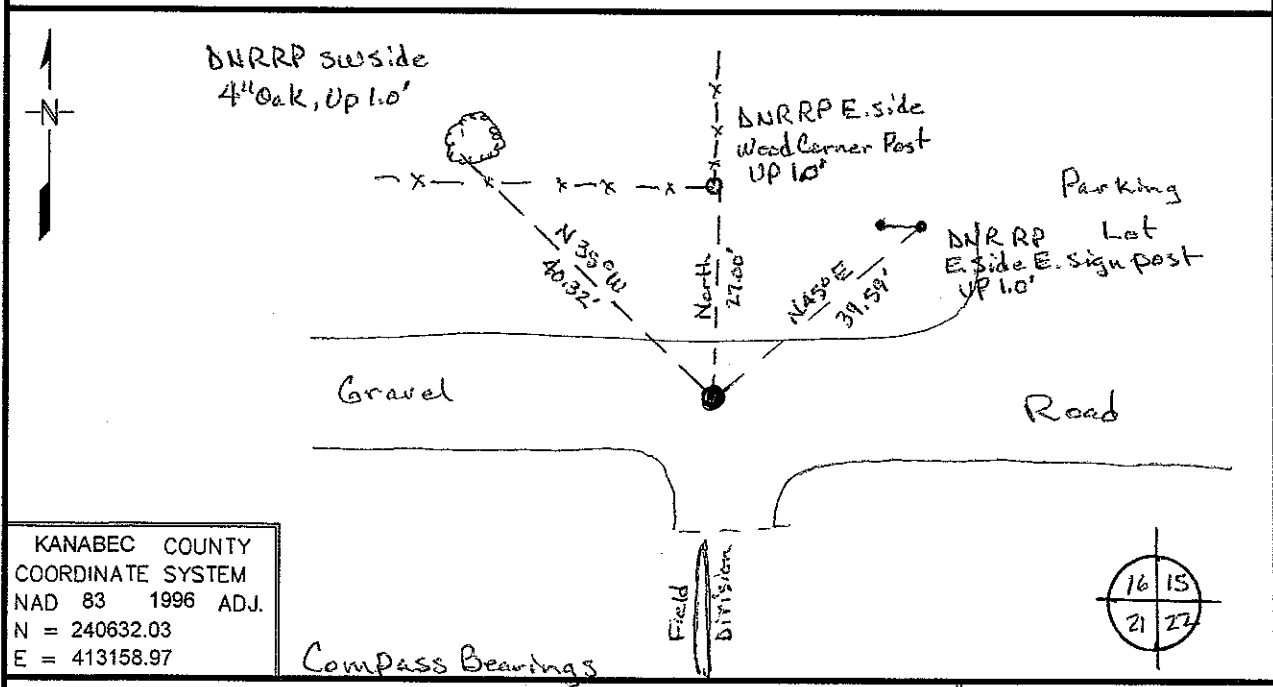
Index No. N - 13

# CERTIFICATE OF LOCATION OF GOVERNMENT CORNER

Northeast Corner of Section 21, Township 42, Range 23  
4th Principal Meridian, State of Minnesota, County of Kanabec

At the corner location shown on the sketch:

- On 2/08/07 found a bridge spike in center line of a cut section of road  
DATE
- left monument as found,  lowered monument,  removed monument (explain)
- On 2/24/09 Placed a 3/4 inch X 12 inch rebar with LLS cap #16098, down 0.3'  
DATE



KANABEC COUNTY  
 COORDINATE SYSTEM  
 NAD 83 1996 ADJ.  
 N = 240632.03  
 E = 413158.97

Compass Bearings

Statement of evidence for this corner location is on back of this page.

Nov. 2009, JDW  
 WMA00660

I certify that this document was researched and prepared by me or under my direct supervision.

SIGNATURE John D. Walker DATE 12/2/09 License Number 16098

Title:  Land Surveyor  Professional Engineer  County Surveyor  County Engineer

**Northeast Corner Section 21, Township 42 North, Range 23 West**

- 1851 U.S. General Land Office notes obtained from the Secretary of State's Office states that a post was set for corner with the following bearing trees marked:  
6" Sugar S 42° E 6 links (3.96 feet)  
8" Ironwood S 80° W 9 links (5.94 feet)
- 2007 DNR Lands and Minerals contacted the following offices for survey information:  
Kanabec County Auditor  
Kanabec County Recorder  
Kanabec County Highway Dept.  
Kanabec County Surveyor Ernie Rud  
Metro Land Surveying
- 1911 County Auditor's office on a Ford Township atlas shows a road opening along the section line between sections 16 – 21 and 15 – 22 by Vickery.
- 1974 MB Rude ran traverse around sections 3-6, 7-10 and 15-18. He was working in section 5 and 6, but most of the section corners on the inside of this traverse were established by double proportion. He shows a distance of 5265.30 feet on the north line of section 22 and 5290.40' on the north line of section 21.
- 2007 DNR Lands and Minerals survey crew searched for corners in sections 8-10 and 15-17. At this corner a bridge spike was found in the center line of the east-west road and in line with a fence north and field division south. The road has been cut in this area.
- 2009 In Feb., DNR Lands and Minerals survey crew set a ¾" x 24" rebar with a plastic cap stamped "MN DNR LS16098" in place of the bridge spike to mark the corner and ties were taken.  
Northeast corner section 20 bears N 87°48'42"W 5284.97'  
Northeast corner section 22 bears S 88°16'18"E 5265.26'

For more information on our survey in this area please contact MN DNR, Lands and Minerals, Survey Section, 1601 Minnesota Drive, Brainerd, MN 56401