

# CERTIFICATE OF LOCATION OF GOVERNMENT CORNER

EAST QUARTER Corner of Section 21, Township 42, Range 23, 4TH P.M.  
STATE OF MINNESOTA, County of KANABEC

At the corner location shown on the sketch:  
ON 12/2/2008 SET 4' LONG 1/2" IRON PIPE

Kanabec County U.S. Survey Feet Coordinates  
NAD 1983, HARN 1996 Adjustment  
Obtained by RTK GPS Observation

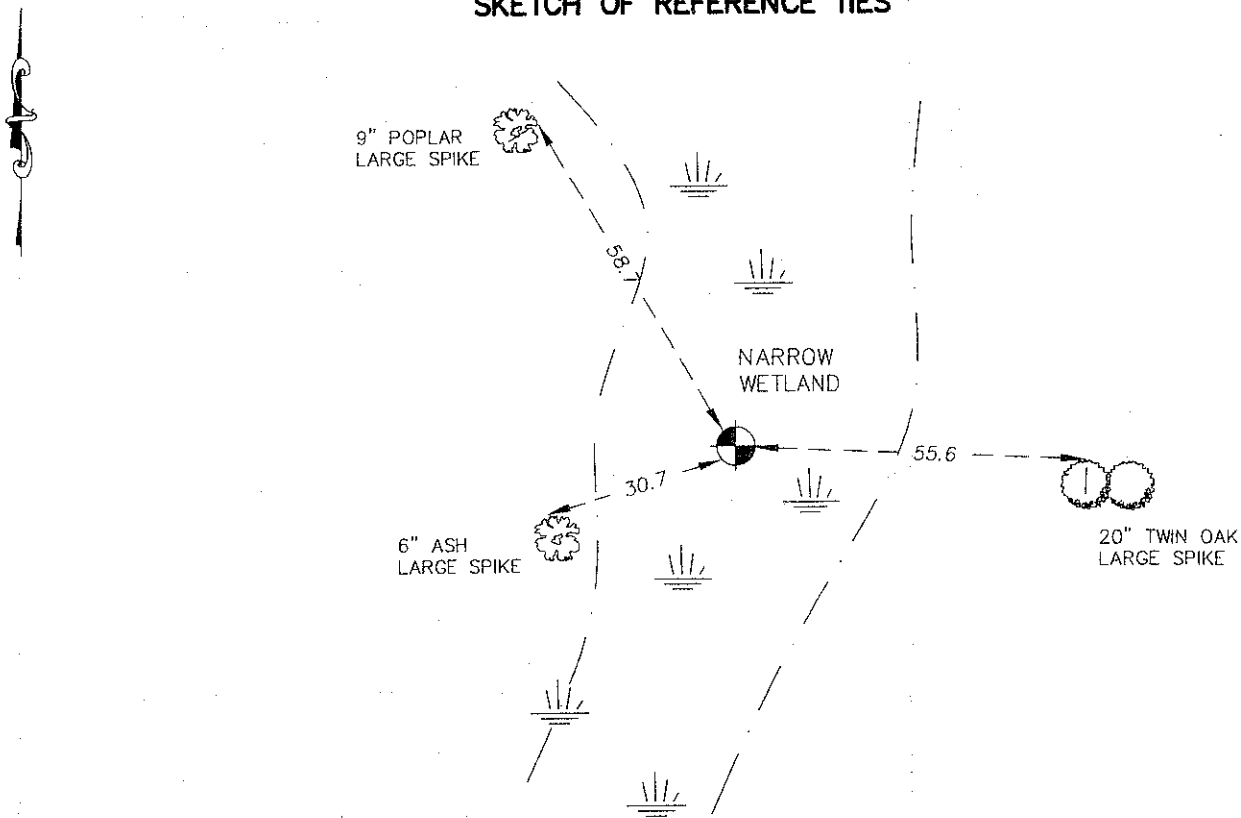
Northing= 238004.420

Easting= 413099.135

Note: NAD 1983, HARN 1996 Adjustment  
coordinates are NOT compatible with  
NAD 1983 coordinates

Note: 1 Meter=3937/1200 U.S. Survey Feet

### SKETCH OF REFERENCE TIES



Statement of evidence relative to this corner location is on back of page.

I hereby certify that this document and the data contained herein was prepared by me or under my direct supervision.

*Ernest J. Rud*  
Signature

3-17-2009  
Date

Registration No. Minn No 9808

- Land Surveyor,     Professional Engineer  
 County Surveyor,     County Engineer

### OFFICE OF THE COUNTY RECORDER

County of \_\_\_\_\_

I hereby certify that this document was filed in the County Recorder's office at \_\_\_\_\_ M. on the \_\_\_\_\_ day of \_\_\_\_\_ A.D., 20\_\_\_\_

County Recorder \_\_\_\_\_

BY \_\_\_\_\_ Deputy

DOCUMENT NO. \_\_\_\_\_

EAST QUARTER CORNER SECTION 21, TOWNSHIP 42, RANGE 23

**STATEMENT OF EVIDENCE**

THE ORIGINAL CORNER WAS SET BY D.S. JOHN M. GIAY ON OCTOBER 21, 1851 AND 2 BEARING TREES WERE ESTABLISHED. NO VISIBLE EVIDENCE FOR THE CORNER POST OR BEARING TREES COULD BE FOUND.

ON DECEMBER 2, 2008 E.G. RUD AND SONS DID A SURVEY OF THE NORTHEAST QUARTER OF THE NORTHWEST QUARTER OF SECTION 21 AND HAD TO RESET THIS CORNER. THIS CORNER FALLS IN A TAMARACK SWAMP BOTH TODAY AND AS IT DID IN 1851. THERE IS AN OCCUPATION LINE RUNNING FROM THE NORTHEAST CORNER OF SECTION 21 TO THE EAST QUARTER. A STEEL FENCE POST WAS FOUND 7 FEET NORTH AND 6 FEET EAST OF A POSITION ON LINE AND EQUIDISTANT FROM THE NORTHEAST TO THE SOUTHEAST CORNER OF SECTION 21. A TRAIL TO EAST HAS BEEN USED FOR A.T.V.'S. WITH NO WELL ESTABLISHED OCCUPATION LINES OR EVIDENCE TO THE ORIGINAL CORNER, OR RECORDS OF ANY SUBSEQUENT SURVEYS THIS CORNER WAS ESTABLISHED BY LOST METHODS AND SET ON LINE AND EQUIDISTANT FROM THE NORTHEAST AND SOUTHEAST CORNER OF SECTION 21. A 4 FOOT BY 1/2 INCH IRON PIPE WAS SET, TIES TAKEN AND KANABEC COUNTY COORDINATES ESTABLISHED ON THIS CORNER.