

CERTIFICATE OF LOCATION OF GOVERNMENT CORNER

North Quarter Corner of Section 27, Township 42 North, Range 23 West,
4th Principal Meridian, Kanabec County, State of Minnesota

At the corner location shown on the sketch:
On 5/23/2017 set a 7/8" x 20" Rebar Monument with
Aluminum Cap.

Kanabec County U.S. Survey Feet Coordinates
NAD 1983, HARN 1996 Adjustment
Obtained by RTK GPS observation
Northing: 235301.4815
Easting: 415639.7204

Note: NAD 1983, HARN 1996 Adjustment
coordinates are NOT compatible with
NAD 1983 coordinates

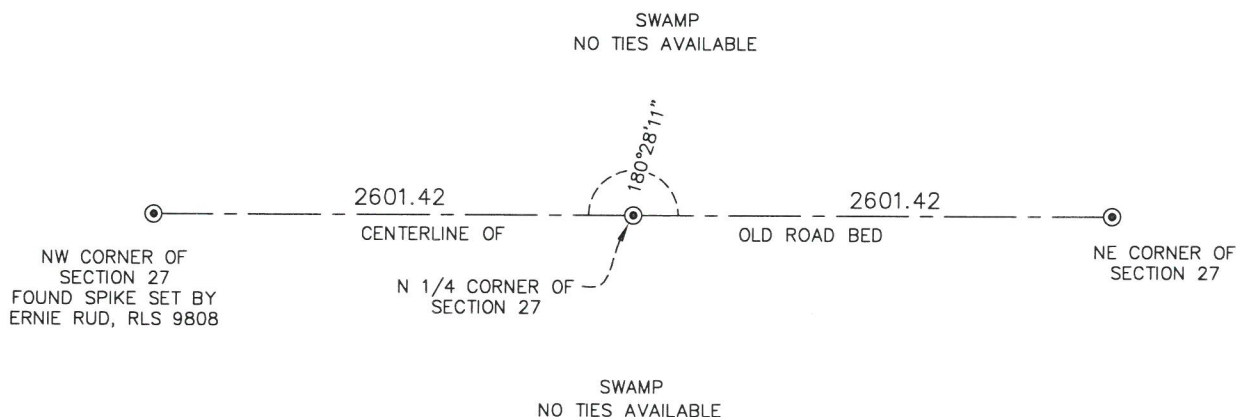
Note: 1 Meter = 3937/1200 U.S. Survey Feet

SKETCH OF REFERENCE TIES

NOT TO SCALE

KROSCHER LAND SURVEYORS, INC.
ASSUMES NO LIABILITY FOR THE ACCURACY
OF THE GPS COORDINATES SHOWN HEREON.
ALL COORDINATES AND DIMENSIONS
SHOULD BE FIELD VERIFIED BY THE USER.

THE BASIS OF BEARINGS FOR THIS
DRAWING IS THE KANABEC COUNTY
COORDINATE SYSTEM BY MNDOT,
NAD 1983, HARN 1996 ADJUSTMENT

**SECTION 22****SECTION 27**

Kroschel Land Surveyors, Inc.

1639 Main Street North, Suite 6, Pine City, MN 55063
Phone: 320-629-3267 Fax: 320-629-0176

Statement of evidence relative to this corner location is on back of page.

I hereby certify that this survey, plan, or report was prepared by me or under my direct supervision, that the United States public land survey monument record is correct and complete to the best of my knowledge and belief, and that I am a duly Licensed Land Surveyor under the laws of the State of Minnesota.

Tyler J. Kroschel

License No. 44490

☐ Land Surveyor

☒ County Surveyor

12-27-2017

Date

OFFICE OF THE COUNTY RECORDER

County of Kanabec

I hereby certify that this document was filed in the
County Recorder's office at _____ .M. on the
_____ day of _____ A.D., 20____

County Recorder _____

By _____, Deputy

DOCUMENT NO. _____

Statement of Evidence:

In October of 1851, Deputy Surveyor John Gay set a post to mark the North Quarter Corner of Section 27, Township 42 North, Range 23 West, 4th Principal Meridian.

Reference ties were taken to:

8 inch Birch at North 40 degrees East a distance of 13 links

11 inch Birch at South 10 degrees East a distance of 19 links

All of the original Government corner evidence was searched for. None was found.

1908— Book 1 of 2 of Surveys, Page 46, located at the County Highway Department shows a survey by T.B. Vickery of a road along the north line of Section 27. Vickery gives a distance of 79.00 chains (5214 feet) along the north line of Section 27 (I measure 5202.84 feet). On Page 316 Vickery has a map of the road showing the words "US Witness" at the North Quarter corner of Section 27. He does not give any distances to the North Quarter corner of Section 27.

In May 2017, a survey was made around Section 27, Township 42 North, Range 23 West, 4th Principal Meridian for Dan Plattner to locate existing monuments, lines of occupation and establish search areas.

On 5/23/2017 I made a search with a metal locator at the centerline of an old road bed and halfway between the Northeast and Northwest corners of Section 27. No evidence of the corner was found. I set a 7/8" x 20" Rebar with Aluminum Cap at the centerline of the old road bed and halfway between the Northeast and Northwest corners of Section 27. Established reference ties and assigned Kanabec County Coordinates. This location was determined to be the best available evidence of the original corner location.

I did not make any excavation at this location because the old road bed is in too poor of shape to access with equipment.

There is a fence line running north about 27 feet east of the corner location. There is a fence line running south about 34 feet east of the corner location. Neither fence seems to compare well with Vickery's distances.



Kroschel Land Surveyors, Inc.

1639 Main Street North, Suite 6, Pine City, MN 55063
Phone: 320-629-3267 Fax: 320-629-0176