

# CERTIFICATE OF LOCATION OF GOVERNMENT CORNER

Northeast corner of Section 28, Township 42 North, Range 23 West,  
4th Principal Meridian, Kanabec County, State of Minnesota

At the corner location shown on the sketch:  
On 5/23/2017, found a spike and replaced with a 7/8" x 20" Rebar with an Aluminum Cap.

Kanabec County U.S. Survey Feet Coordinates  
NAD 1983, HARN 1996 Adjustment  
Obtained by RTK GPS observation  
Northing: 235376.8305  
Easting: 413039.4002

Note: NAD 1983, HARN 1996 Adjustment  
coordinates are NOT compatible with  
NAD 1983 coordinates  
Note: 1 Meter = 3937/1200 U.S. Survey Feet

## SKETCH OF REFERENCE TIES

DISTANCE UNITS FOR THIS DRAWING IS  
U.S. SURVEY FEET

NOT TO SCALE

KROSCHEL LAND SURVEYORS, INC.  
ASSUMES NO LIABILITY FOR THE ACCURACY  
OF THE GPS COORDINATES SHOWN HEREON.  
ALL COORDINATES AND DIMENSIONS  
SHOULD BE FIELD VERIFIED BY THE USER.

THE BASIS OF BEARINGS FOR THIS  
DRAWING IS THE KANABEC COUNTY  
COORDINATE SYSTEM BY MNDOT,  
NAD 1983, HARN 1996 ADJUSTMENT



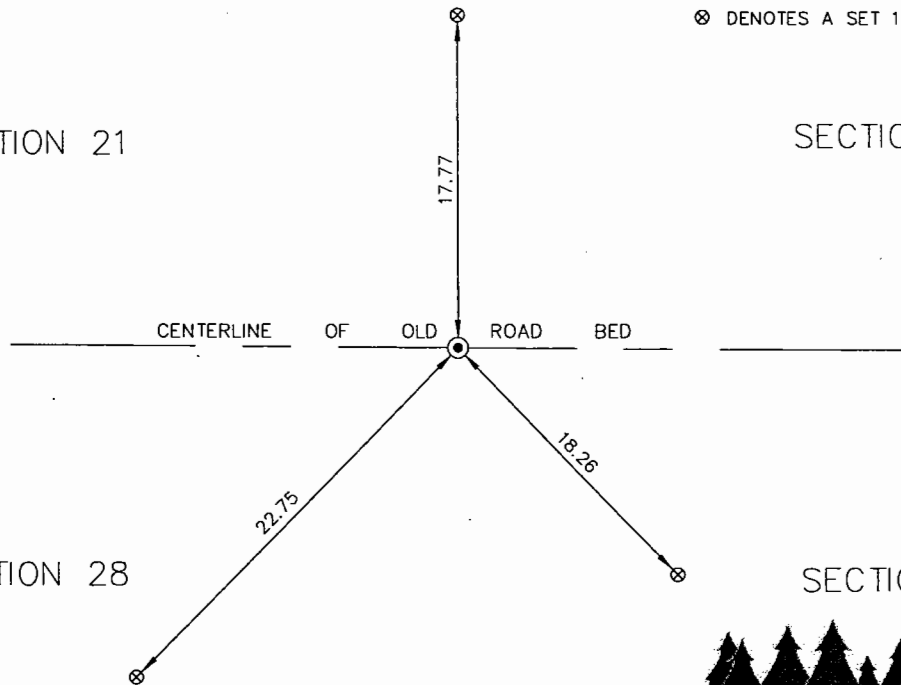
⊗ DENOTES A SET 1/2" x 14" REBAR

SECTION 21

SECTION 22

SECTION 28

SECTION 27



**Kroschel Land Surveyors, Inc.**

1639 Main Street North, Suite 6, Pine City, MN 55063  
Phone: 320-629-3267 Fax: 320-629-0176

Statement of evidence relative to this corner location is on back of page.

I hereby certify that this report was prepared by me or under my direct supervision, that the United States public land survey monument record is correct and complete to the best of my knowledge and belief, and that I am a duly Licensed Land Surveyor under the laws of the State of Minnesota.

  
Tyler J. Kroschel, County Surveyor

2-9-2023  
Date

License No. 44490

### OFFICE OF THE COUNTY RECORDER

County of Kanabec

I hereby certify that this document was filed in the County Recorder's office at \_\_\_\_\_ .M. on the \_\_\_\_\_ day of \_\_\_\_\_ A.D., 20\_\_\_\_  
County Recorder \_\_\_\_\_

\_\_\_\_\_, Deputy

DOCUMENT NO. \_\_\_\_\_

Statement of Evidence:

In October of 1851, Deputy Surveyor John M. Gay set a post to mark the Northeast Corner of Section 28, Township 42 North, Range 23 West, 4th Principal Meridian.

Reference ties were taken to:

16 inch Oak at North 61 degrees East a distance of 14 links

8 inch Ironwood at South 50 degrees West a distance of 25 links

All of the original Government corner evidence was searched for. None was found.

1906- Book 1 of 2 of Surveys, page 46, located at the County Highway Department shows a survey by T.B. Vickery of a road along the North line of Section 27 and 28. Vickery gives a distance of 79 chains (5214 feet) along the North line of Section 27 (I measure 5202.84 feet) and he measured a distance of 80 chains (5280 feet) along the North line of Section 28 (I measure 5268.56 feet).

In May 2017, I made a survey around Section 27, Township 42 North, Range 23 West, 4th Principal Meridian for Dan Plattner to locate existing monuments, lines of occupation and establish search areas.

On 5/23/2017, I found a spike set by Ernie Rud, RLS 9808 at the NE corner of Section 28. I accepted the found spike as the best available evidence of the original corner monument location. I replaced the found spike with a 7/8" x 20" rebar with an aluminum cap and assigned Kanabec County Coordinates.

No excavation was made at this location because the old road bed is in too poor of condition to access with equipment.