

CERTIFICATE OF LOCATION OF GOVERNMENT CORNER

NORTHEAST QUARTER Corner of Section 33, Township 42, Range 23, 4TH P.M.
STATE OF MINNESOTA, County of KANABEC

At the corner location shown on the sketch:
ON 3/29/2007 SET A 24" X 7/8" REBAR 6" BELOW GRADE ON CENTERLINE WITH KANABEC COUNTY ALUM. DISK.

Kanabec County U.S. Survey Feet Coordinates
NAD 1983, HARN 1996 Adjustment
Obtained by RTK GPS Observation

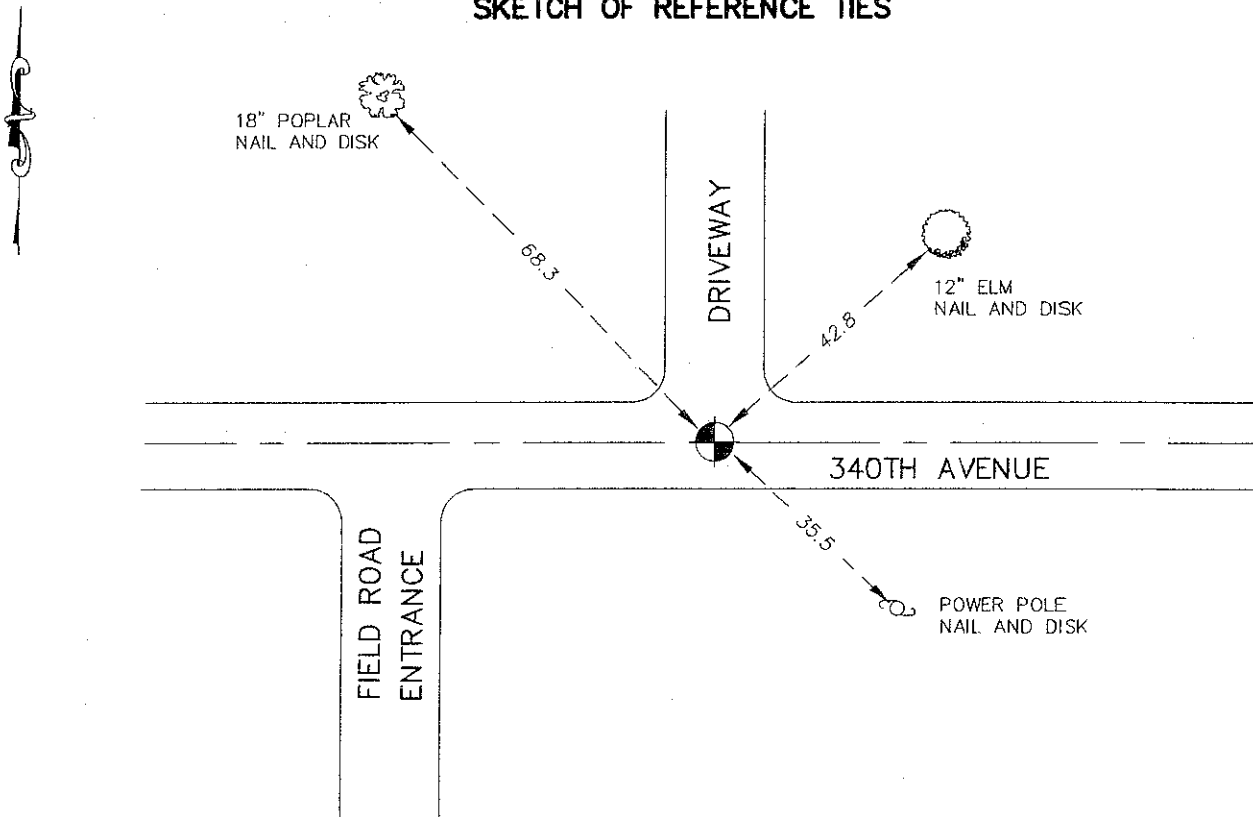
Northing= 230186.183

Easting= 412993.306

Note: NAD 1983, HARN 1996 Adjustment coordinates are NOT compatible with NAD 1983 coordinates

Note: 1 Meter=3937/1200 U.S. Survey Feet

SKETCH OF REFERENCE TIES



Statement of evidence relative to this corner location is on back of page.

I hereby certify that this document and the data contained herein was prepared by me or under my direct supervision.

Ernest J. Reed 3-17-2009
Signature Date

Registration No. *Minn No. 9808*

- Land Surveyor, Professional Engineer
- County Surveyor, County Engineer

OFFICE OF THE COUNTY RECORDER

County of _____

I hereby certify that this document was filed in the County Recorder's office at _____ M. on the _____ day of _____ A.D., 20 _____

County Recorder _____

BY _____ Deputy

DOCUMENT NO. _____

NORTHEAST CORNER SECTION 33, TOWNSHIP 42, RANGE 23

STATEMENT OF EVIDENCE

THE ORIGINAL CORNER WAS SET BY D.S. JOHN M. GIAY ON OCTOBER 21, 1851 AND AN ELM AND TAMARACK WERE USED AS BEARING TREES. NO VISIBLE EVIDENCE FOR THE CORNER POST OR BEARING TREES COULD BE FOUND.

THERE IS A ROAD OPENING ON FILE ALONG THE NORTH LINE OF SECTION 33 DATED JULY 26, 1913 AND VICKEREY NOTED A DISTANCE OF 80 CHAINS ALONG THIS LINE. IN MARCH 2003 E.G. RUD AND SONS MEASURED SEVERAL SECTION LINES TO PREFORM A SURVEY IN SECTION 23 BEING IN EXISTING MONUMENTS AND LINES OF OCCUPATION THIS CORNER FALLS IN THE CENTERLINE OF AN EAST WEST ROAD, A FENCE RUNNING SOUTH AND A TREE LINE TO THE NORTH. NO EXCAVATION WAS DONE AS THIS FELL VERY CLOSE TO A NORTH SOUTH CULVERT SO ANY EVIDENCE WOULD HAVE BEEN DESTROYED. IN MARCH 2007 MOORE ENGINEERING OF FERGUS FALLS SET A MONUMENT AT THIS LOCATION AND TOOK TIES. WE HAVE ACCEPTED THESE LINES OF OCCUPATION TO BE THE BEST EVIDENCE TO THE LOCATION OF THIS CORNER.