

# CERTIFICATE OF LOCATION OF GOVERNMENT CORNER

EAST QUARTER Corner of Section 33, Township 42, Range 23, 4TH P.M.  
STATE OF MINNESOTA, County of KANABEC

At the corner location shown on the sketch:  
SET A 24" X 7/8" REBAR WITH KANABEC COUNTY ALUMINUM DISK.

Kanabec County U.S. Survey Feet Coordinates  
NAD 1983, HARN 1996 Adjustment  
Obtained by RTK GPS Observation

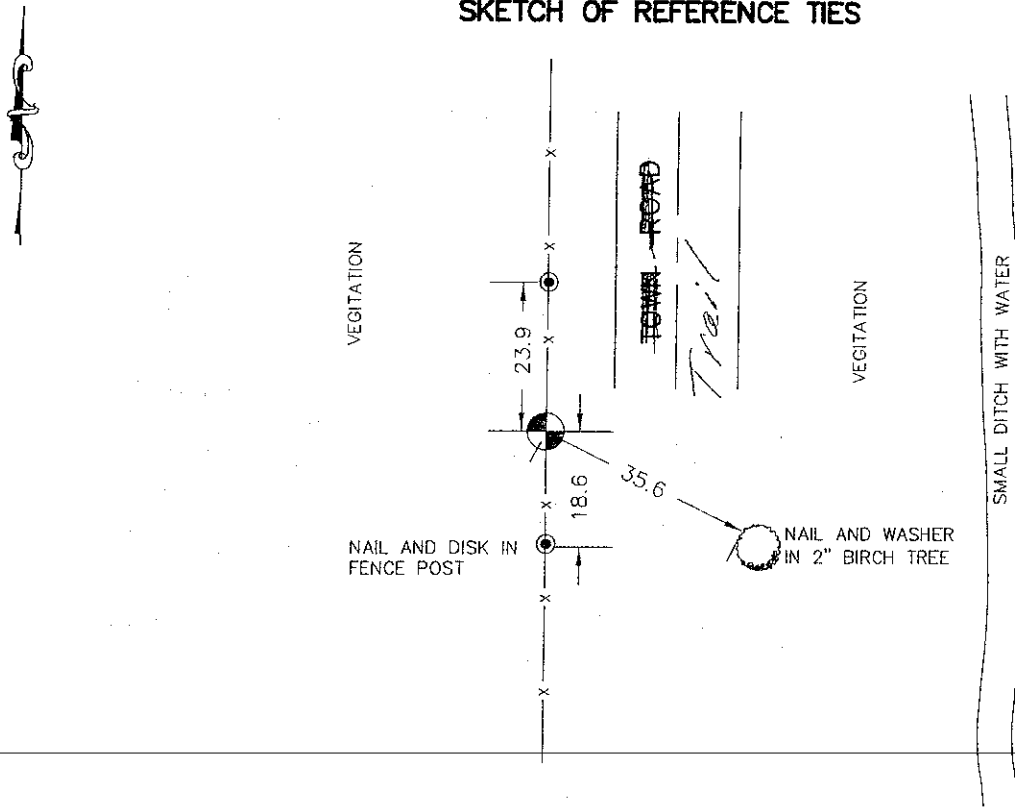
Northing= 227556.611

Easting= 412960.512

Note: NAD 1983, HARN 1996 Adjustment  
coordinates are NOT compatible with  
NAD 1983 coordinates

Note: 1 Meter=3937/1200 U.S. Survey Feet

### SKETCH OF REFERENCE TIES



Statement of evidence relative to this corner location is on back of page.

I hereby certify that this document and the data contained herein was prepared by me or under my direct supervision.

Ernest Grund 3-17-2009  
Signature Date

Registration No. Minn No 9808

Land Surveyor, [ ] Professional Engineer

[ ] County Surveyor, [ ] County Engineer

### OFFICE OF THE COUNTY RECORDER

County of \_\_\_\_\_  
I hereby certify that this document was filed in the County Recorder's office at \_\_\_\_\_ M. on the \_\_\_\_\_ day of \_\_\_\_\_ A.D., 20 \_\_\_\_\_

County Recorder \_\_\_\_\_  
BY \_\_\_\_\_ Deputy

DOCUMENT NO. \_\_\_\_\_

EAST QUARTER CORNER SECTION 33, TOWNSHIP 42, RANGE 23

**STATEMENT OF EVIDENCE**

THE ORIGINAL CORNER WAS SET BY D.S. JOHN M. GIAY ON OCTOBER 23, 1851 AND 2 BALSAM TREES WERE USED AS BEARING TREES. NO VISIBLE EVIDENCE REMAINS FOR THE CORNER POST OR BEARING TREES TODAY.

THIS CORNER FALLS ON A NORTH-SOUTH FENCE LINE AND NO OCCUPATION LINE EAST OR WEST. IN MARCH 2007, MOORE ENGINEERING OF FERGUS FALLS SET A MONUMENT ON LINE AND EQUIDISTANT BETWEEN THE NORTHEAST AND SOUTHEAST CORNERS OF SECTION 33. THIS FELL ON THE NORTH-SOUTH FENCE. KANABEC COUNTY COORDINATES WERE ESTABLISHED ON THIS POSITION AND TIES TAKEN.