

CERTIFICATE OF LOCATION OF GOVERNMENT CORNER

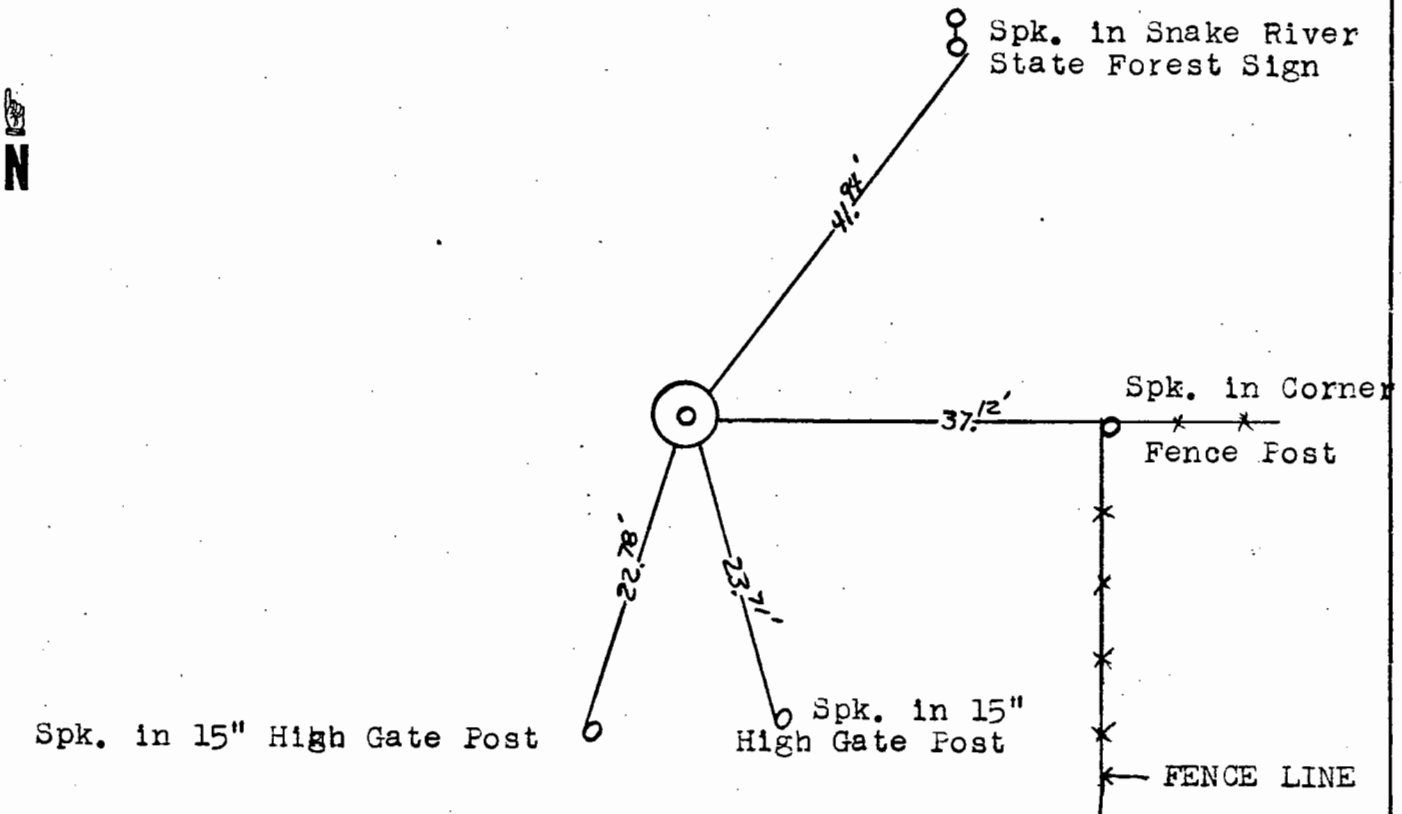
NE Corner of Section 22, Township 42, Range 23, P.M.
 STATE OF MINNESOTA, County of Kanabec

At the corner location shown on the sketch

On Sept. 26, 1975 found a Stone Marked X just below surface
Date

left monument as found, lowered monument, removed monument (explain)
 On Sept. 26, 1975 placed a Kanabec County Cast Alum. Monument
Date
with Magnets over the X on said Stone

SKETCH OF REFERENCE TIES



Statement of evidence relative to this corner location is on back of page.

I hereby certify that this document and the data contained herein was prepared by me or under my direct supervision.

Marcell B. Smith 10-20-75
Signature Date

Registration No. 8195

Land Surveyor, Professional Engineer
 County Surveyor, County Engineer

OFFICE OF THE REGISTER OF DEEDS

County of Kanabec

I hereby certify that this document was filed in the Register of Deeds office at _____ M. on the _____ day of _____ A.D., 19____

Register of Deeds _____

By _____, Deputy

DOCUMENT NO. _____

STATEMENT OF EVIDENCE

Set Monument according to Stone found in excavation
' Stone was Marked with an X.'

Geo H Jenks set stone marked X in May 1921.