

4223069

CERTIFICATE OF LOCATION OF GOVERNMENT CORNER

NE Corner of Section 27, Township 42, Range 23, 4TH P.M.

STATE OF MINNESOTA, County of KANABEC

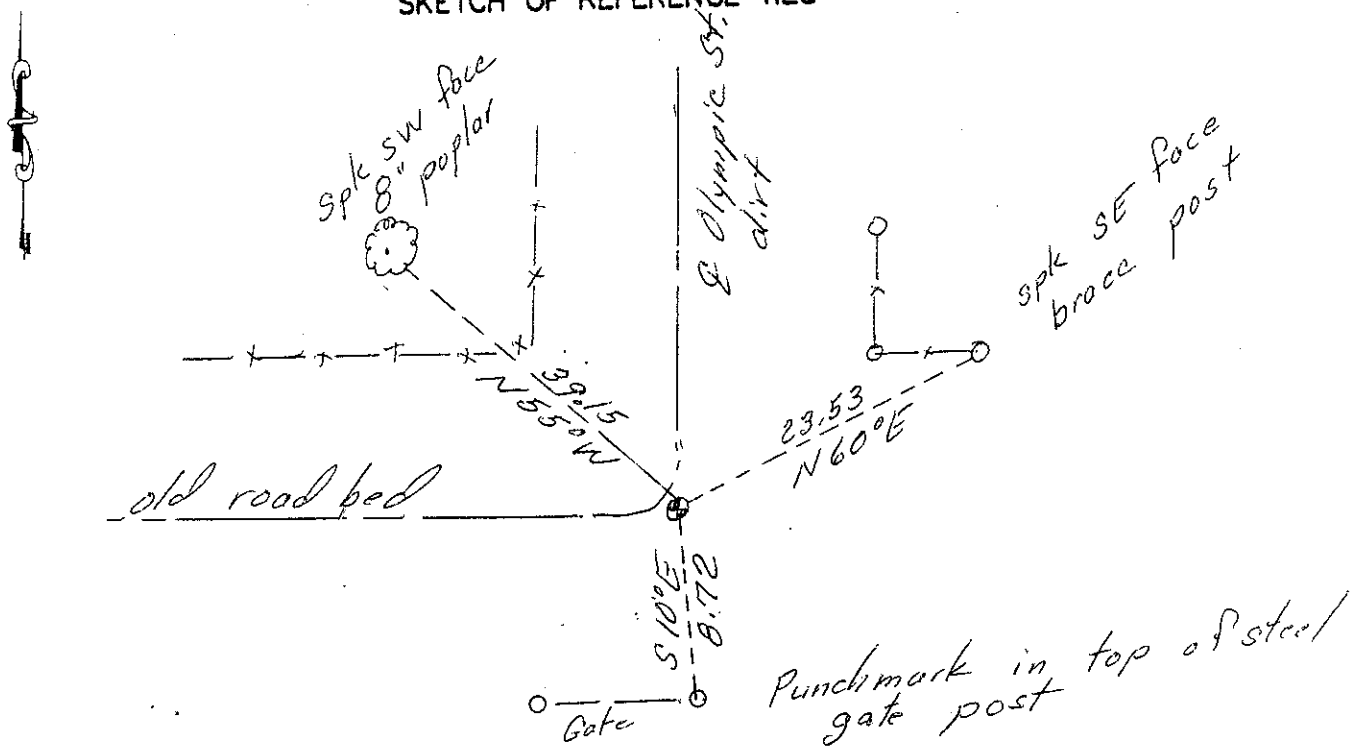
At the corner location shown on the sketch:
Found a #7 rebar with aluminum cap

Kanabec County U.S. Survey Feet Coordinates
NAD 1983, HARN 1996 Adjustment
Obtained by RTK GPS Observation

Northing= 235204.85
Easting= 418239.44

Note: NAD 1983, HARN 1996 Adjustment coordinates are NOT compatible with NAD 1983 coordinates
Note: 1 Meter=3937/1200 U.S. Survey Feet

SKETCH OF REFERENCE TIES



Statement of evidence relative to this corner location is on back of page.

I hereby certify that this document and the data contained herein was prepared by me or under my direct supervision.

Ernest J. Rud 1-1-13
Signature Date

Registration No. Minn No. 9808

- Land Surveyor, Professional Engineer
- County Surveyor, County Engineer

OFFICE OF THE COUNTY RECORDER

County of _____
I hereby certify that this document was filed in the County Recorder's office at _____ M. on the _____ day of _____ A.D., 20____
County Recorder _____
BY _____ Deputy

DOCUMENT NO. _____

All of the original bearing trees are now gone.

There is a town road order on file at the County Court House for a road to end at this corner from the south. It appears that this road was not built. The surveyors report does not state if anything was found or set. The County Highway Department has an old highway map from the 1930's that shows State Highway No. 5 along the west line of section 23 and turning west along the north line of section 27. We were unable to locate any records of this highway. There is an old road bed running north and west at this corner.

In May of 2000, Dale Anderson ran a survey along the west line of section 23 to locate existing monuments, lines of occupation and search areas.

An excavation with a back-hoe was made at the centerline intersection area (15' x 15' x 2' deep) for any evidence of this corner location. No evidence was found in the excavation.

On August 25, 2000 Dale Anderson set a rebar with alum. Cap at the centerline intersection location as the best available evidence of the original corner location.

In 2003 EG Rud & Sons did a survey in section 23 and located the monument, verified and took new ties and established Kanabec County coordinates on the monument.