

CERTIFICATE OF LOCATION OF GOVERNMENT CORNER

North quarter Corner of Section 35, Township 42, Range 23, 4th P.M.

STATE OF MINNESOTA, County of KANABEC

At the corner location shown on the sketch:

Set a #7 rebar with aluminum cap

Kanabec County U.S. Survey Feet Coordinates
NAD 1983, HARN 1996 Adjustment
Obtained by RTK GPS Observation

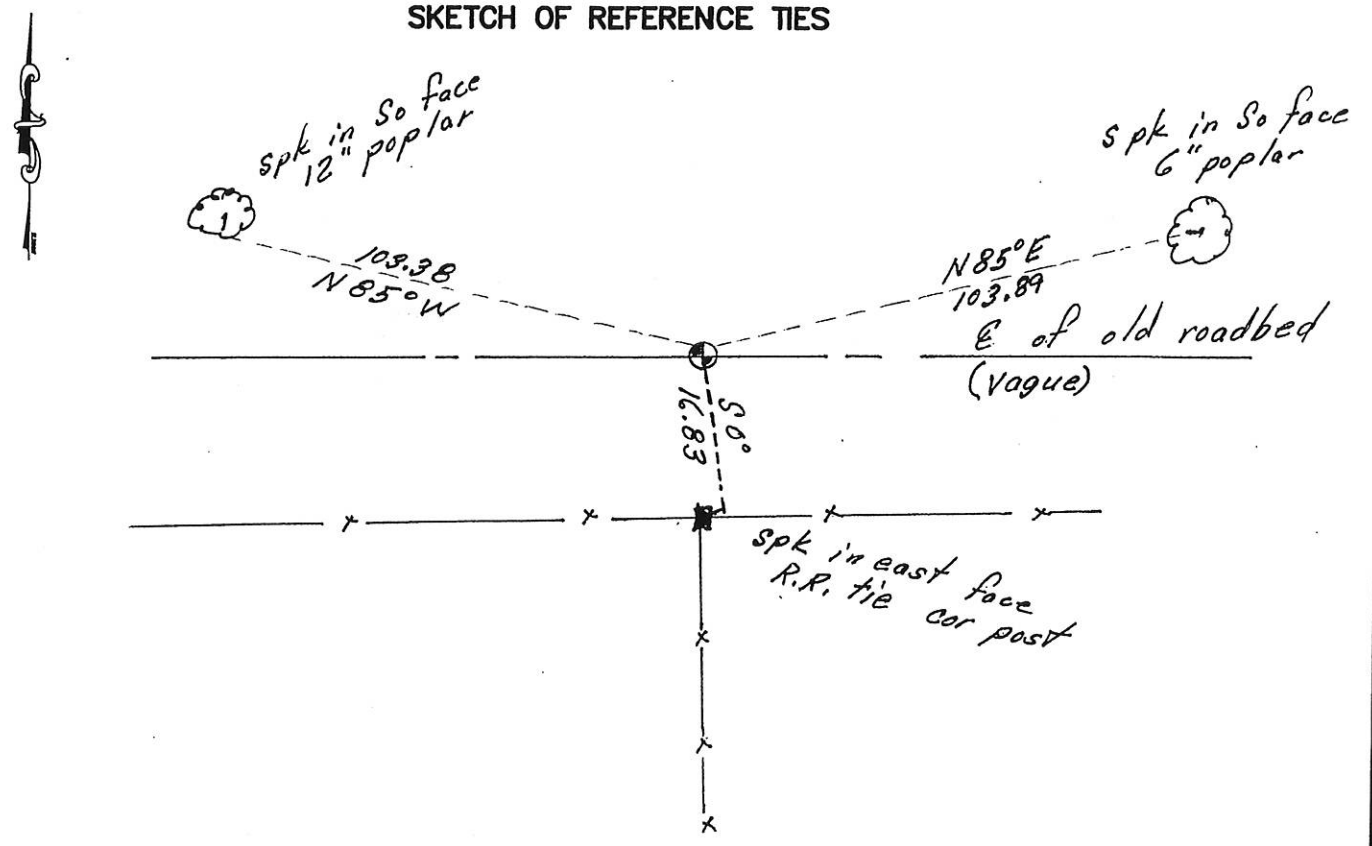
Northing= 230067.16

Easting= 420934.53

Note: NAD 1983, HARN 1996 Adjustment coordinates are NOT compatible with NAD 1983 coordinates

Note: 1 Meter=3937/1200 U.S. Survey Feet

SKETCH OF REFERENCE TIES



Statement of evidence relative to this corner location is on back of page.

I hereby certify that this document and the data contained herein was prepared by me or under my direct supervision.

Ernest L. Reed
Signature

4-14-15
Date

Registration No. 9808

- Land Surveyor, [] Professional Engineer
- [] County Surveyor, [] County Engineer

OFFICE OF THE COUNTY RECORDER

County of _____

I hereby certify that this document was filed in the County Recorder's office at _____ M. on the _____ day of _____ A.D., 20____

County Recorder _____

BY _____ Deputy

DOCUMENT NO. _____

STATEMENT OF EVIDENCE

4223~~67~~

4223067

North Quarter Corner Section 35

The original government post was set by a Deputy Surveyor John M. Gley on October, 20 1851 and two bearing trees noted as;

3" Tamarack bearing South 39° East at 8 Links

3" Tamarack bearing North 33° East at 28 Links

No evidence could be found for the original post or bearing trees.

J.B. Vickerey ran a survey along the North line of Section 35 on February 19, 1914 for a road opening. He does not state what was found or set at the corners.

On page 19 of corner ties filed March 9, 1925 by George Jenks certified he found one bearing tree and set a stone to perpetuate this corner. Two poplar trees were noted as bearing trees. No evidence could be found for the corner.

This corner falls on the centerline of an old roadbed running East and West with an old fence line running south. This was considered to be the last evidence for the perpetuation of this corner.

A #7 rebar with an aluminum cap was set, ties taken and Kanabec County Coordinates established on this position. It fell 6.3 feet east and 3.4 feet north of a lost position.