

CERTIFICATE OF LOCATION OF GOVERNMENT CORNER

NE Corner of Section 34, Township 42, Range 23, 4TH P.M.
STATE OF MINNESOTA, County of KANABEC

At the corner location shown on the sketch:

*Found 1/2" x 14" iron pipe over stone
with chiseled "X"*

Kanabec County U.S. Survey Feet Coordinates
NAD 1983, HARN 1996 Adjustment
Obtained by RTK GPS Observation

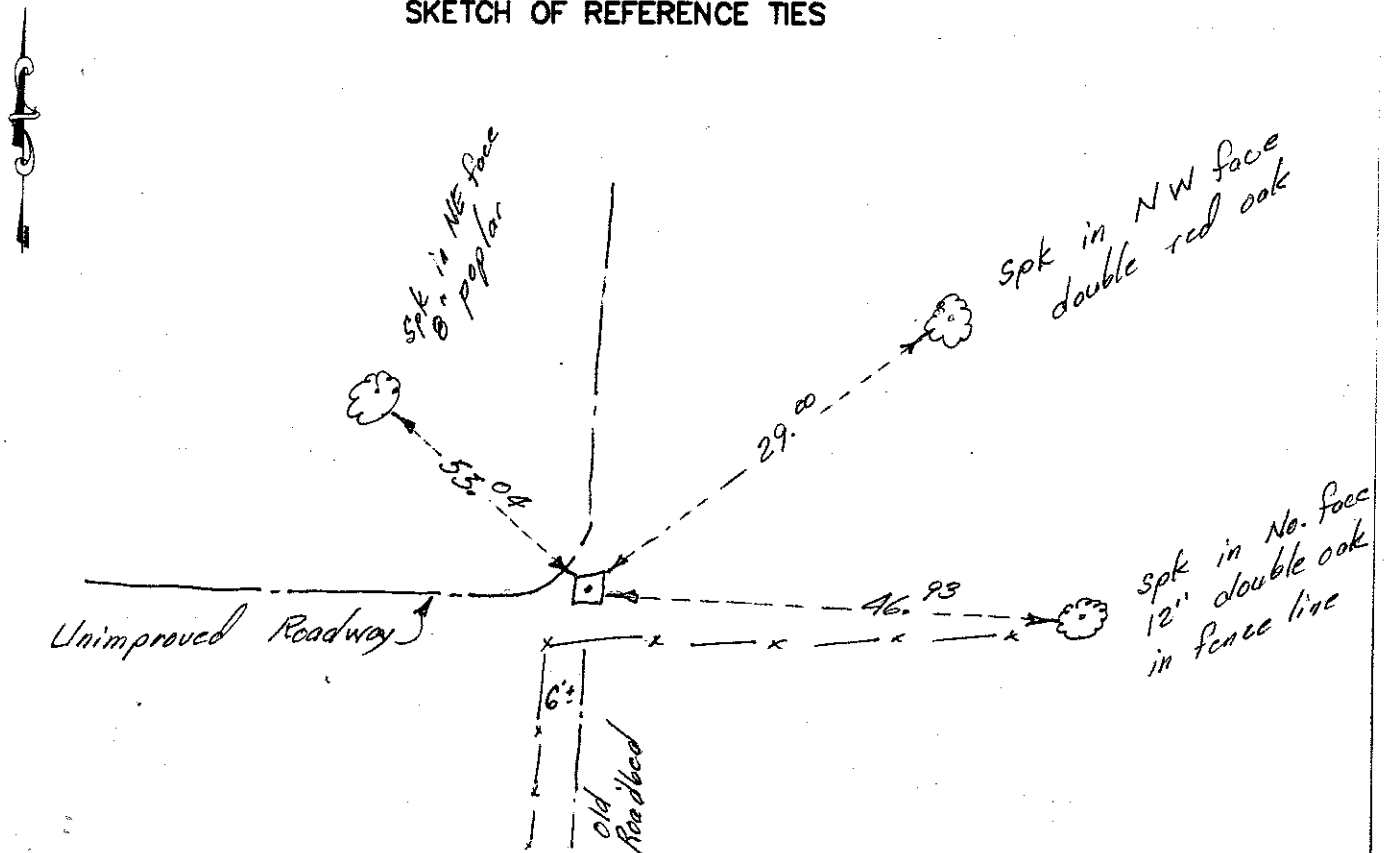
Northing= 230100.30

Easting= 418295.53

Note: NAD 1983, HARN 1996 Adjustment
coordinates are NOT compatible with
NAD 1983 coordinates

Note: 1 Meter=3937/1200 U.S. Survey Feet

SKETCH OF REFERENCE TIES



Statement of evidence relative to this corner location is on back of page.

I hereby certify that this document and the data contained herein was prepared by me or under my direct supervision.

Ernest J. Rud
Signature

11-12-12
Date

Registration No. Minn No. 9808

Land Surveyor, Professional Engineer

County Surveyor, County Engineer

OFFICE OF THE COUNTY RECORDER

County of _____

I hereby certify that this document was filed in the County Recorder's office at _____ M. on the _____ day of _____ A.D., 20____

County Recorder _____

BY _____ Deputy

DOCUMENT NO. _____

STATEMENT OF EVIDENCE: NORTHEAST CORNER 34-42-23 4223066

The original government corner was set by Deputy Surveyor, John M. Giay on October 20, 1851 and 2 bearing trees noted as:

8" Balsam bearing North 60 degrees West at 5 links

8" Balsam bearing South 35 degrees East at 7 links

No visible evidence for the corner or bearing trees could be found. There is a road opening along the east line of Section 34 dated February 19, 1914 and being surveyed by Vickery. The distance he measured then was 78.69 chains (5193.5 feet). Vickery doesn't state what was set at the Northeast corner of Section 34. In March 2004 we found a ½" iron pipe at intersection of 4 old roadbeds. We hand dug and found a stone with a chiseled "X" under the pipe. We measured 5251.93 feet from the stone to the Southeast corner of Section 34, or 58 feet longer than Vickery. On March 9, 1925 George Jenks set a stone marked with an "X" to replace the old post. The stone fit all lines of occupation in 4 directions so this was considered the best perpetuation of evidence for this corner. We accepted the pipe, took reference ties and established Kanabec County coordinates on this position.