

CERTIFICATE OF LOCATION OF GOVERNMENT CORNER

East quarter Corner of Section 34, Township 42, Range 23, 4th P.M.

STATE OF MINNESOTA, County of KANABEC

At the corner location shown on the sketch:

Set a #7 rebar with aluminum cap.

Kanabec County U.S. Survey Feet Coordinates
NAD 1983, HARN 1996 Adjustment
Obtained by RTK GPS Observation

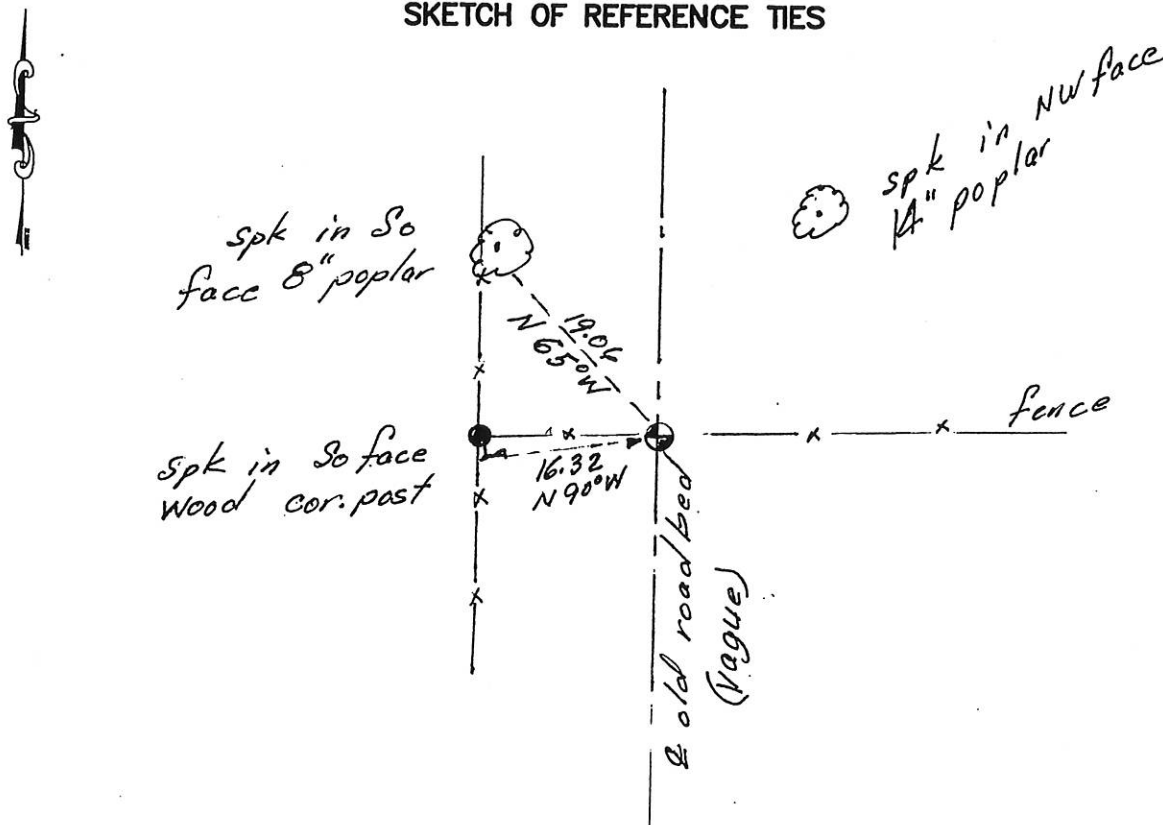
Northing= 227465.79

Easting= 418254.55

Note: NAD 1983, HARN 1996 Adjustment
coordinates are NOT compatible with
NAD 1983 coordinates

Note: 1 Meter=3937/1200 U.S. Survey Feet

SKETCH OF REFERENCE TIES



Statement of evidence relative to this corner location is on back of page.

I hereby certify that this document and the data contained herein was prepared by me or under my direct supervision.

Ernest L. Rud
Signature

4-4-2015
Date

Registration No. 9808

Land Surveyor, [] Professional Engineer

[] County Surveyor, [] County Engineer

OFFICE OF THE COUNTY RECORDER

County of _____

I hereby certify that this document was filed in the County Recorder's office at _____ M. on the _____ day of _____ A.D., 20____

County Recorder _____

BY _____ Deputy

DOCUMENT NO. _____

STATEMENT OF EVIDENCE

4223065

East Quarter Corner Section 34, Township 42, Range 23

The original government post was set by a Deputy Surveyor John M. Gley on October 21, 1851 and two bearing trees noted as;

12" Birch bearing North 35° East at 14 Links

7" Black Oak bearing North 45° West at 17 Links

No evidence could be found for the original post or bearing trees.

J.B. Vickerey ran a survey along the East line of Section 34 on February 19, 1914 for a road opening. He does not state what was found or set at the corners.

This corner falls on the centerline of a very old roadbed running North and South and the extension of a fence line running east. The centerline of the roadbed is one rod east of a fence running North and South. Therefore we set a monument on the centerline of the roadbed and the extension of the fence running east. This was considered the best evidence for the perpetuation of this corner. The location fell 9 feet south and 10 feet east of a lost position. Ties were taken and Kanabec County Coordinates established.